



THE NATIONAL ARCHIVES OF THE UNITED STATES

LITTERA  
SCRIPTA  
MANET

★ 1934 ★



Washington, DC 20408

**Bibliography Based on  
Research of NICDS  
Collaborative Perinatal Project**

RG 3-443-85-1

5203-01



TABLE OF CONTENTS

Bibliography .....5233-003  
Author Index .....5233-095

5233-002

5/29/85

NINCDS COLLABORATIVE PERINATAL PROJECT BIBLIOGRAPHY 1

1 AMBRUS CM, HEINTRAUD DM, NISKANDER KR, FISCHER L, FLEISHMAN J.  
BROSS IDJ, AMBRUS JL (DOCUMENT NUMBER 00159)  
Evaluation of survivors of respiratory distress syndrome at 4 years of age.  
Am J Dis Child 120: 296-302. 1970

2 ANDERSON RB, ROSENBLITH JF (DOCUMENT NUMBER 00255)  
Sudden unexpected death syndrome: early indicators.  
In Sudden and Unexpected Deaths in Infancy (Col. Death).  
F Camps and R Carpenter (Eds). Baltimore, Williams and  
Wilkins Co., 1972, pp 115-123

3 ANDERSON-HUNTINGTON RB, ROSENBLITH JF (DOCUMENT NUMBER 00225)  
Report on newborns with questionable light sensitivity.  
Biol Neonate 20: 81-84, 1972

4 BABSON SG, HENDERSON NB, CLARK HM JR (DOCUMENT NUMBER 00122)  
The preschool intelligence of oversized newborns.  
Pediatrics 44: 536-538. 1969

5 BABSON SG, KANGAS J (DOCUMENT NUMBER 00088)  
Preschool intelligence of undersized term infants.  
Am J Dis Child 117: 553-557, 1969

6 BENIRSCHKE K (DOCUMENT NUMBER 00384)  
The final answers to single umbilical artery? (Commentaries)  
Pediatrics 52: 116-117, 1973

7 BENSON RC, BERENDES HW, HEISS H (DOCUMENT NUMBER 00123)  
Fetal compromise during elective cesarean section.  
II. A report from the collaborative project.  
Am J Obstet Gynecol 105: 579-588, 1969

5233-003

5233-003

2 NINCDS COLLABORATIVE PERINATAL PROJECT BIBLIOGRAPHY

8 BENSON RC, FUJIKURA T  
Circumvallate and circummarginate placenta: unimportant  
clinical entities. (DOCUMENT NUMBER 00124)

Obstet Gynecol 34: 799-804, 1969

9 BENSON RC, SHUBECK F, CLARK MM JR, BERENDES MM, WEISS M,  
DEUTSCHBERGER J  
Fetal compromise during elective cesarean section.  
A report from the collaborative project. (DOCUMENT NUMBER 00062)

Am J Obstet Gynecol 91: 645-656, 1965

10 BENSON RC, SHUBECK F, DEUTSCHBERGER J, WEISS M, BERENDES MM  
Fetal heart rate as a predictor of fetal distress.  
A report from the collaborative project. (DOCUMENT NUMBER 00089)

Obstet Gynecol 32: 259-266, 1968

11 BERENDES MM  
Birth asphyxia and neurologic deficit: report from the NINCDS  
collaborative perinatal study. Report of the Fifty-seventh Ross  
Conference on Pediatric Research. (DOCUMENT NUMBER 00001)

In Brain Damage in the Fetus and Newborn from Hypoxia or  
Asphyxia. LS James, RE Myers, and GE Gauli (Eds), Columbus, Ross  
Laboratories, 1967, pp 8-11

12 BERENDES MM  
The evaluation of therapeutic procedures in the practice of  
obstetrics. (DOCUMENT NUMBER 00002)

IV World Congress of Gynecology and Obstetrics,  
Official Lectures, Buenos Aires, September 26, 1964, pp 281-301

13 BERENDES MM  
Obstetrical complications and mental deficiency. (DOCUMENT NUMBER 00003)

In Proceedings of the International Copenhagen Congress on the  
Scientific Study of Mental Retardation. Denmark, Aug. 7-14,  
1966, pp 308-316

5232-004

14  
BERENDES HW  
Prematurity. (DOCUMENT NUMBER 00004)

Trans N Engl Obstet Gynecol Soc 17: 205-206, 1963

15  
BERENDES HW  
Structure and scope of the collaborative study - present status. (DOCUMENT NUMBER 00005)  
Proceedings AMA National Conference on Infant Mortality, Fairmont Hotel, San Francisco, California, August 12-13, 1966, pp 95-99

16  
BERENDES HW  
The structure and scope of the collaborative project on cerebral palsy, mental retardation, and other neurological and sensory disorders of infancy and childhood. (DOCUMENT NUMBER 00006)

In Research Methodology and Needs in Perinatal Studies. SS Chipman, AM Littenfeld BG Greenberg, and JF Donnelly (Eds), Springfield, Illinois, Charles C Thomas, 1966, pp 118-138

17  
BERENDES HW  
Cerebrale spatschaden nach perinataler asphyxie. (DOCUMENT NUMBER 00068)  
(Late cerebral damage after perinatal asphyxia)  
Gynakologe Band 1: 94-98, 1968 (German)

18  
BERENDES HW  
Fetal distress, its significance in neurological and mental impairment of childhood. A preliminary analysis of the data from the perinatal collaborative project in the National Institute of Neurological Diseases and Blindness, U.S.A. (English Abstract) (DOCUMENT NUMBER 00069)

Conc A-2m 8: 37-45, 1968 (Japanese)

4 NINCDS COLLABORATIVE PERINATAL PROJECT BIBLIOGRAPHY

19 BERENDES HW (DOCUMENT NUMBER 00095)  
Fetal distress: its significance in neurological and mental impairment of childhood.

In Perinatal Factors Affecting Human Development. Proceedings of the Special Session of the Eighth Meeting of the Pan American Health Organization Advisory Committee on Medical Research, June 10, 1969. Washington, DC. Ser Publ No 185, 1969, pp 228-238

20 BERENDES HW (DOCUMENT NUMBER 00219)  
Neurological sequelae of perinatal complications.

In Proceedings of the XIII International Congress of Pediatrics held in Wien, Osterreich, August 29-September 4, 1971. Wien, Osterreich, Verlag der Wiener Medizinischen Akademie, 5: 631-637, 1972

21 BERENDES HW, WEISS M (DOCUMENT NUMBER 00096)  
The NIN collaborative study. A progress report.

Proceedings of the Third International Conference on Congenital Malformations. The Hague, September 7-13, 1969. Excerpta Medica International Congress Series No. 204, 1969, pp 293-298

22 BERENDES HW, WEISS M (DOCUMENT NUMBER 00132)  
The NIN collaborative study. A progress report.

In Congenital Malformations. Proceedings of the Third International Conference, The Hague, The Netherlands, September 7-13, 1969. FC Fraser and VA McKusick (Eds), Amsterdam, Excerpta Medica Foundation, International Congress Series No. 204, 1970, pp 293-298

23 BERENDES HW, WEISS M, DEUTSCHBERGER J, JACKSON EC (DOCUMENT NUMBER 00007)  
Factors associated with breech delivery.

Am J Public Health 55: 708-719, 1965

24  
BERG C  
Maternal seizure disorders. (Letters to the Editor)  
Neurology 34: 265. 1984  
(DOCUMENT NUMBER 00555)

25  
RISHOP EH, ISRAEL SL, BRISCOE CC  
Obstetric influences on the premature  
infant's first year of development.  
Obstet Gynecol 26: 628-635. 1965  
(DOCUMENT NUMBER 00056)

26  
BOGGS TR, HARDY JB, FRAZIER TM  
Correlation of neonatal serum total bilirubin concentrations  
and developmental status at age eight months.  
A preliminary report from the collaborative project.  
J Pediatr 71: 553-560. 1967  
(DOCUMENT NUMBER 00054)

27  
BORDLEY JE, HARDY JB  
A hearing survey on preschool children.  
Trans Am Acad Ophthalmol Otolaryngol 76: 349-354. 1972  
(DOCUMENT NUMBER 00196)

28  
BRACKBILL Y  
Obstetrical medication study. (Letters to the Editor)  
Science 205: 447-448. 1979  
(DOCUMENT NUMBER 00418)

29  
BRACKBILL Y, NICHOLS PL  
A test of the confluence model of intellectual development.  
Dev Psychol 18: 192-198. 1982  
(DOCUMENT NUMBER 00475)

30  
BRODY JE  
Fetal health: a new view emerges.  
The New York Times Cl. C3. 2/16/82  
(DOCUMENT NUMBER 00476)



6 NINCDS COLLABORATIVE PERINATAL PROJECT BIBLIOGRAPHY

51 BROMAN SH (DOCUMENT NUMBER 00419)  
Obstetrical medication study. (Letters to the Editor)  
Science 205: 446, 1979

52 BROMAN SH (DOCUMENT NUMBER 00420)  
Perinatal anoxia and cognitive development in early childhood.  
In Infants Born at Risk. TM Field (Ed); New York, SP Medical  
and Scientific Books, 1979, Pt I, Chap 3, pp 29-52

53 BROMAN SH (DOCUMENT NUMBER 00466)  
Longterm development of children born to teenagers.  
In Teenage Parents and Their Offspring. KG Scott,  
T Field and E Roberts (Eds); New York, Grune  
and Stratton, 1981, pp 195-224

54 BROMAN SH (DOCUMENT NUMBER 00467)  
Risk factors for deficits in early cognitive development.  
In Measurement of Risks. GG Berg and HD Mallic (Eds),  
New York, Plenum, 1981, pp 131-142

55 BROMAN SH (DOCUMENT NUMBER 00468)  
Outcome of adolescent pregnancy: a report from the  
Collaborative Perinatal Project.

In The At Risk Infant. S Harel (Ed). Amsterdam,  
Excerpta Medica, 1980, pp 45-49

56 BROMAN SH (DOCUMENT NUMBER 00558)  
The Collaborative Perinatal Project: an overview.  
In Handbook of Longitudinal Research, Vol I.  
SA Mednick, M Harway and KM Finello (Eds), New York,  
Praeger Publishers, 1984, pp 185-215

37 BROMAN SM  
Obstetric medications.  
(DOCUMENT NUMBER 00489)

In Childhood Learning Disabilities and Prenatal Risk.  
CC Brown (Ed), Skillman, NJ, Johnson and Johnson, 1983,  
pp 56-64

38 BROMAN SM  
Characteristics of severely retarded children in the  
Collaborative Perinatal Project.  
(DOCUMENT NUMBER 00570)

In Proceedings of Conference on Assessment of the National  
Effort to Combat Mental Retardation From Biomedical Causes.  
Washington, DC, November 14-16, 1983. US DHHS, Office of  
Human Developmental Services, President's Committee on Mental  
Retardation, 1983, pp 21-25

39 BROMAN SM, NICHOLS PL, KENNEDY MA  
Precursors of low IQ in young children.  
(DOCUMENT NUMBER 00220)

Proceedings of 80th Annual Convention, APA, Honolulu,  
Hawaii, Sept. 1-3, 1972, pp 77-78

40 BROMAN SM, NICHOLS PL, KENNEDY MA  
Preschool IQ: Prenatal and Early Developmental Correlates.  
(DOCUMENT NUMBER 00275)  
Hillsdale, NJ, Lawrence Erlbaum Assoc Inc, 1975, pp 326

41 BURCH PRJ  
Dr Burch replies. (To: "Dose-response effect of maternal  
smoking." by Garn SM, et al.) (Letters to the Editor)  
(DOCUMENT NUMBER 00385)  
Pediatrics 62: 862-863. 1978

42 BUTLER BV, ENDEL R  
Mental and motor scores at 8 months in relation  
to neonatal photic responses.  
(DOCUMENT NUMBER 00090)

Dev Med Child Neurol 11: 77-82. 1969

5244 - 009

8 NINCDS COLLABORATIVE PERINATAL PROJECT BIBLIOGRAPHY

43 CAPLAN B. MONTGOMERY LA  
Results of vision screening at seven years in the  
Johns Hopkins collaborative perinatal project.  
Johns Hopkins Med J 128: 261-264. 1971  
(DOCUMENT NUMBER 00164)

44 CATALANO LH JR, FUCCILLO DA, TRAUB RO, SEVER JL  
Isolation of rubella virus from placentas and throats of  
infants: a prospective study after the 1964-65 epidemic.  
Obstet Gynecol 38: 6-14. 1971  
(DOCUMENT NUMBER 00177)

45 CATALANO LH JR, JOHNSON LD  
Herpesvirus antibody and carcinoma in situ of the cervix.  
JAMA 217: 447-450. 1971  
(DOCUMENT NUMBER 00178)

46 CATALANO LH JR, SEVER JL  
The role of viruses as causes of congenital defects.  
Annu Rev Microbiol 25: 255-282. 1971  
(DOCUMENT NUMBER 00179)

47 CHASE A  
Another smoking legacy? (Abstract)  
Med Tribune 21: 1. 1980  
(DOCUMENT NUMBER 00448)

48 CHASE A  
9 other variables most predictive of  
hyperactive-impulsive behavior.  
Med Tribune 21: 12. 1980  
(DOCUMENT NUMBER 00449)

49 CHI JG, BOOLING EC, GILLES FH  
Left-right asymmetries of the temporal speech areas of the  
human fetus.  
Arch Neurol 34: 346-348. 1977  
(DOCUMENT NUMBER 00312)

50 CHUNG CS, MYRIANTHOPOULOS MC (DOCUMENT NUMBER 00008)  
 Racial and Prenatal factors in major congenital malformations.  
 Am J Hum Genet 20: 44-60. 1968

51 CHUNG CS, MYRIANTHOPOULOS MC (DOCUMENT NUMBER 00298)  
 Factors Affecting risks of congenital malformations.  
 I. Epidemiologic analysis.  
 II. Effect of maternal diabetes.  
 Birth Defects: Original Article Series. XI. 10. 1975.  
 pp. 1-38

52 CHURCHILL JA (DOCUMENT NUMBER 00180)  
 On the etiology of cerebral palsy in premature infants.  
 (Abstract)  
 Neurology 20: 405. 1970

53 CHURCHILL JA, BERENDES MH (DOCUMENT NUMBER 00097)  
 Intelligence of children whose mothers had ectopurpia during  
 pregnancy.

In Perinatal Factors Affecting Human Development. Proceedings of  
 the Special Session of the Eighth Meeting of the Pan American  
 Health Organization Advisory Committee on Medical Research,  
 June 19, 1969. Washington DC. Sci Publ No 185, 1969, pp 30-35

54 CHURCHILL JA, BERENDES MH, NEMORE J (DOCUMENT NUMBER 00098)  
 Neuropsychological deficits in children of diabetic mothers.  
 A report from the collaborative study of cerebral palsy.  
 Am J Obstet Gynecol 105: 257-268. 1969

55 CHURCHILL JA, CARLETON JM, BERENDES MH (DOCUMENT NUMBER 00099)  
 Hematocrit of newborns of short gestation.  
 Dev Med Child Neurol 12: 153-157. 1970

524

10 NINCDS COLLABORATIVE PERINATAL PROJECT BIBLIOGRAPHY

56 CHURCHILL JA, MASLAND RE, NAYLOR AF, ASHDORTH MR  
The etiology of cerebral palsy in pre-term infants.  
(DOCUMENT NUMBER 00237)

Dev Med Child Neurol 16: 143-149, 1974

57 CLARREN SK, SMITH DH, HARVEY MAS, WARD RH, MYRIANTHOPOULOS NC  
Hyperthermia--a prospective evaluation of a possible  
teratogenic agent in man.  
(DOCUMENT NUMBER 00421)

J Pediatr 95: 81-83, 1979

58 CLERCY-DARPOUX F, DONATI-PELLIE C  
Epistasis effect: an alternative to the hypothesis of  
linkage disequilibrium in HLA associated diseases.  
(DOCUMENT NUMBER 00469)

Ann Hum Genet 44: 195-204, 1980

59 CLIFFORD SH  
An experimental program.  
(DOCUMENT NUMBER 00036)

In Proceedings AMA National Conference on Infant Mortality,  
Fairmont Hotel, San Francisco, Calif., August 12-13,  
1966, pp 39

60 CLIFFORD SH, DRORBAUGH JE  
Obstetric history of grossly retarded children in the Boston  
sample of the collaborative study.  
(DOCUMENT NUMBER 00156)

In Physical Trauma as an Etiological Agent in Mental Retardation,  
CR Ankle and EA Bering (Eds), Proceedings of a conference on the  
Etiology of Mental Retardation, October 13-16, 1968, Omaha,  
Nebraska, pp 93-99

61 CONEN BH, MELLITS ED  
Blood group incompatibility and immunoglobulin levels.  
(DOCUMENT NUMBER 00197)

Johns Hopkins Med J 128: 318-331, 1971

- 62 COLLIGAN PC (DOCUMENT NUMBER 00270)  
 Psychometric deficits related to perinatal stress.  
 J Learning Disabilities 7: 150-160, 1974
- 63 COPLAN J (DOCUMENT NUMBER 00582)  
 Seizures following immunizations. (Letters to the Editor)  
 J Pediatr 103: 696, 1983
- 64 COHETT RM, STERN I (DOCUMENT NUMBER 00293)  
 Maternal thyroid status and the incidence of respiratory distress  
 syndrome. evaluation of a proposed relationship.  
 Pediatrics 55: 497-499, 1975
- 65 CUNNINGHAM DC (DOCUMENT NUMBER 00549)  
 Smoking and pregnancy. (Letters to the Editor)  
 Am J Dis Child 136: 82, 1982
- 66 CUSHNER IM, MELLITS ED (DOCUMENT NUMBER 00163)  
 The relationship between fetal outcome and the  
 gestational age and birth weight of the fetus.  
 Johns Hopkins Med J 128: 252-260, 1971
- 67 DALESSIO DJ (DOCUMENT NUMBER 00566)  
 Seizure disorders and pregnancy.  
 N Engl J Med 312: 559-563, 1985
- 68 DALLAS J (DOCUMENT NUMBER 00166)  
 Patient follow-up in a long-term study.  
 Johns Hopkins Med J 128: 240-251, 1971

12 NINCDS COLLABORATIVE PERINATAL PROJECT BIBLIOGRAPHY

- 69 de la BURDE, B. CHDOTE McLS (DOCUMENT NUMBER 00232)  
Does asymptomatic lead exposure in children have latent sequelae?  
J Pediatr 81: 1088-1094, 1972
- 70 de la BURDE, B. CHDOTE McLS (DOCUMENT NUMBER 00307)  
Early asymptomatic lead exposure and development at school age.  
J Pediatr 87: 638-642, 1975
- 71 de la BURDE, B. LAUPUS WE (DOCUMENT NUMBER 00266)  
Subclinical lead poisoning in a group of children.  
Va Med Monthly 100: 623-628, 1973
- 72 de la BURDE, B. REAMES B (DOCUMENT NUMBER 00267)  
Prevention of pica, the major cause of lead poisoning  
in children.  
Am J Public Health 63: 737-743, 1973
- 73 de la BURDE, B. SHAPIRO IM (DOCUMENT NUMBER 00295)  
Dental lead, blood lead, and pica in urban children.  
Arch Environ Health 30: 281-284, 1975
- 74 DENHOFF E (DOCUMENT NUMBER 00226)  
The natural life history of children with minimal brain  
dysfunction.  
Ann NY Acad Sci 205: 188-205, 1973
- 75 DENHOFF E, HAINSWORTH PK, HAINSWORTH ML (DOCUMENT NUMBER 00189)  
The child at risk for learning disorder: can he be identified  
during the first year of life?  
Clin Pediatr 11: 164-170, 1972

5233

U11

76 DENNO DJ (DOCUMENT NUMBER 00568)  
 Neuropsychological and early environmental correlates of sex differences in crime.  
 Intern J Neuroscience 23: 199-214, 1984

77 DENNO DJ, MEIJS B, MACHSHON I, AURAND S (DOCUMENT NUMBER 00565)  
 Early cognitive functioning: sex and race differences.  
 Intern J Neuroscience 16: 159-172, 1982

78 DEPUE RH (DOCUMENT NUMBER 00563)  
 Maternal and gestational factors affecting the risk of cryptorchidism and inguinal hernia.  
 International Journal of Epidemiology 13: 311-317, 1984

79 DRAGE JS (DOCUMENT NUMBER 00009)  
 Collaborative perinatal research project of the National Institute of Neurological Diseases and Blindness.  
 Conference on Drugs and Poisons as Etiological Agents in Mental Retardation. Supported by National Institute of Neurological Diseases and Blindness, US Dept. of Health, Education, and Welfare. Public Health Service Publ. 1791, Wash., DC, Govt. Printing Office, 1971, pp 139-143

80 DRAGE JS, BERENDES HA (DOCUMENT NUMBER 00010)  
 Appar scores and outcome of newborns.  
 Pediatr Clin North Am 13: 655-667, 1966

81 DRAGE JS, BERENDES HA (DOCUMENT NUMBER 00100)  
 The appar score: a 5-year psychological examination in Perinatal Fac. following Human Development. Proceedings of the Special Session on Eighth Meeting of the Pan American Health Organization, Advisory Committee on Medical Research, June 10, 1969. Washington DC, Sci Publ No 185, 1969, pp 222-227

5234-015



14 NINCDS COLLABORATIVE PERINATAL PROJECT BIBLIOGRAPHY

- 82 DRAGE JS, KENNEDY C, BERENDES HH, SCHWARZ BK, WEISS W  
(DOCUMENT NUMBER 00011)  
The apgar score as an index of infant morbidity.  
A report from the collaborative study of cerebral palsy.  
Dev Med Child Neurol 8: 141-148, 1966
- 83 DRAGE JS, KENNEDY C, SCHWARZ BK  
(DOCUMENT NUMBER 00012)  
The apgar score as an index of neonatal mortality.  
A report from the collaborative study of cerebral palsy.  
Obstet Gynecol 24: 222-230, 1964
- 84 DRORBAUGH JE, MOORE DM, HARRAM JH Jr  
(DOCUMENT NUMBER 00304)  
Association between gestational and environmental events and  
central nervous system function in 7-year-old children.  
Pediatrics 56: 529-537, 1975
- 85 EHRHARDT AA, GRISANTI GC, MEYER-BAHLBURG HFL  
(DOCUMENT NUMBER 00315)  
Prenatal exposure to medroxyprogesterone acetate (MPA) in girls.  
Psychoneuroendocrinology 2: 391-398, 1977
- 86 EHRHARDT AA, MEYER-BAHLBURG HFL, FELDMAN JF, INCE SE  
(DOCUMENT NUMBER 00562)  
Sex-dimorphic behavior in childhood subsequent to prenatal  
exposure to exogenous progestogens and estrogens.  
Archives of Sexual Behavior 13: 457-477, 1984
- 87 ELIZAN TS, FROELICH LA, FABIYI A, LEY AC, SEVER JL  
(DOCUMENT NUMBER 00070)  
Viral infection in pregnancy and congenital  
CNS malformations in man.  
Arch Neurol 20: 115-119, 1969
- 88 ELLENBERG JH, HIRTZ DG, NELSON KB  
(DOCUMENT NUMBER 00548)  
Age at onset of seizures in young children.  
Ann Neurol 15: 127-134, 1984

- 89 ELLENBERG JH, NELSON KB (DOCUMENT NUMBER 00313)  
 Febrile seizures and later intellectual performance.  
 Arch Neurol 35: 17-21, 1978
- 90 ELLENBERG JH, NELSON KB (DOCUMENT NUMBER 00430)  
 Birth weight and gestational age in children with cerebral palsy  
 or seizure disorders.  
 Am J Dis Child 133: 1044-1048, 1979
- 91 ELLENBERG JH, NELSON KB (DOCUMENT NUMBER 00450)  
 Sample selection and the natural history of disease.  
 JAMA 243: 1337-1340, 1980
- 92 ELLENBERG JH, NELSON KB (DOCUMENT NUMBER 00470)  
 Early recognition of infants at high risk for cerebral palsy:  
 examination at age four months.  
 Dev Med Child Neurol 23: 705-716, 1981
- 93 ELLIOTT J (DOCUMENT NUMBER 00422)  
 Maternal smoking and the fetus: one fear buried but others arise.  
 (Commentaries)  
 JAMA 241: 867-868, 1979
- 94 ENGEL R (DOCUMENT NUMBER 00174)  
 EEG in prematures and subsequent development.  
 In Physical Trauma as an Etiological Agent in Mental Retardation.  
 CR Angie, EA Bering (Eds), Proceedings of a conference on the  
 Etiology of Mental Retardation. October 13-16, 1968, Omaha,  
 Nebraska, pp 251-260

95  
ENGEL R  
Neonatal EEG responses, developmental landmarks and IQ.  
(DOCUMENT NUMBER 00233)

In Proceedings of the Thirteenth International Congress of  
Pediatrics, Wien, Osterreich, August 29-Sept 4, 1971. Wien,  
Osterreich, Verlag der Wiener Medizinischen Akademie, Vol 3,  
1972. pp 551-557

96  
ENGEL R, BUTLER BV, FAY MH, CLARKSON QD  
Visual evoked responses, developmental and intelligence  
scores from birth to seven. (Abstract)  
(DOCUMENT NUMBER 00209)

Dev Med Child Neurol 14: 114, 1972

97  
ENGEL R, FAY MH  
Are electroencephalographic-evoked response latencies  
in neonates predictors of language performance at 1 and  
3 years of age? (Abstract)  
(DOCUMENT NUMBER 00210)

Electroencephalogr Clin Neurophysiol 30: 159-160, 1971

98  
ENGEL R, FAY MH  
Visual evoked responses at birth, verbal scores  
at three years, and IQ at four years.  
(DOCUMENT NUMBER 00211)

Dev Med Child Neurol 14: 283-289, 1972

99  
ENGEL R, FAY MH  
Neonatal visual evoked potentials as predictors of language  
performance test scores at age eight. (Abstract)  
(DOCUMENT NUMBER 00314)

Electroencephalogr Clin Neurophysiol 40: 332, 1976

100  
ENGEL R, HENDERSON NB  
Visual evoked responses and IQ scores at school age.  
(DOCUMENT NUMBER 00234)

Dev Med Child Neurol 15: 136-145, 1973

- 101  
ENGEL RR, ELIN RJ  
Hypermaesemie from birth asphyxia.  
J Pediatr 77: 631-637, 1970  
(DOCUMENT NUMBER 00172)
- 102  
FALKNER F  
Implications for growth in human twins.  
In Human Growth, Vol I: Principles and Prenatal Growth.  
F Falkner and JM Tanner (Eds),  
New York, London, Plenum Press, 1978, Chap 16, pp 397-413  
(DOCUMENT NUMBER 00398)
- 103  
FAY MH  
Marathon monologues of a three-year-old.  
J Commun Disord 1: 61-65, 1967  
(DOCUMENT NUMBER 00063)
- 104  
FAY MH  
On the basis of autistic echolalia.  
J Commun Disord 2: 38-47, 1969  
(DOCUMENT NUMBER 00091)
- 105  
FAY MH  
The challenge of personal pronouns.  
J Learning Disabilities 5: 299-305, 1972  
(DOCUMENT NUMBER 00212)
- 106  
FAY MH, BUTLER BV  
Echolalia, IQ and the developmental dichotomy  
of speech and language systems.  
J Speech Hear Res 11: 365-371, 1968  
(DOCUMENT NUMBER 00064)
- 107  
FAY MH, BUTLER BV  
Echo-reaction as an approach to semantic resolution.  
J Speech Hear Res 14: 645-651, 1971  
(DOCUMENT NUMBER 00213)

18 NINCDS COLLABORATIVE PERINATAL PROJECT BIBLIOGRAPHY

108 FERRISS GS, DAVIS GD, DORSEN FMcF, HACKETT ER  
Changes in latency and form of the photically induced  
average evoked response in human infants.  
(DOCUMENT NUMBER 00042)

Electroencephalogr Clin Neurophysiol 22: 305-312, 1967

109 FIEDLER MF, LENNEBERG EH, ROLFE UT, DRORBAUGH JE  
A speech screening procedure with three-year-old children.  
(DOCUMENT NUMBER 00195)

Pediatrics 48: 268-276, 1971

110 FIEDLER MF, SCHMIDT EP  
Sex differences in Bender-Gestalt drawings  
of seven-year-old children.  
(DOCUMENT NUMBER 00162)

Percept Mot Skills 29: 753-754, 1969

111 FISCH RO, BILEK MK, DEINARD AS, CHANG PN  
Growth, behavioral, and psychologic measurements of adopted  
children: the influences of genetic and socioeconomic factors  
in a prospective study.  
(DOCUMENT NUMBER 00316)

J Pediatr 89: 494-500, 1976

112 FISCH RO, BILEK MK, HORROBIN JM, CHANG PN  
Children with superior intelligence at 7 years of age. A  
prospective study of the influence of perinatal, medical, and  
socioeconomic factors.  
(DOCUMENT NUMBER 00309)

Am J Dis Child 130: 481-487, 1976

113 FISCH RO, BILEK MK, MILLER LD, ENGEL RR  
Physical and mental status at 4 years of age of survivors  
of the respiratory distress syndrome.  
(DOCUMENT NUMBER 00297)

J Pediatr 86: 497-503, 1975

114 FISCHE RO, BILEK MK, ULSTROM R  
 Obesity and leanness at birth and their relationship to body habitus in later childhood.  
 Pediatrics 56: 521-528, 1975  
 (DOCUMENT NUMBER 00310)

115 FISCHE RO, GRAVEM HJ, ENGEL RR  
 Neurological status of survivors of neonatal respiratory distress syndrome.  
 J Pediatr 73: 395-403, 1968  
 (DOCUMENT NUMBER 00087)

116 FLICK GL  
 Sinistrality revisited: a perceptual-motor approach.  
 Child Dev 37: 613-622, 1966  
 (DOCUMENT NUMBER 00043)

117 FORT AT, MARLIN RS  
 Pregnancy outcome after noncatastrophic maternal trauma during pregnancy.  
 Obstet Gynecol 35: 912-915, 1970  
 (DOCUMENT NUMBER 00128)

118 FREEMAN JM  
 Febrile seizures: an end to confusion. (Commentaries)  
 Pediatrics 61: 806-807, 1978  
 (DOCUMENT NUMBER 00317)

119 FRIEDMAN EA  
 Blood Pressure, Edema and Proteinuria in Pregnancy.  
 (Task Force on Toxemia)  
 (DOCUMENT NUMBER 00386)

In Vol. 7: Progress in Clinical and Biological Research.  
 EA Friedman (Ed),  
 New York, Alan R Liss Inc, 1976. 292 pp

20 NINCDS COLLABORATIVE PERINATAL PROJECT BIBLIOGRAPHY

120  
FRIEDMAN EA  
Hypertensive disease in pregnancy: blood pressure and edema.  
(DOCUMENT NUMBER 00402)

In The Kidney In Pregnancy. Clinical Obstetrics and Gynecology Series. RR deAlvarez (Ed), New York, John Wiley & Sons (Wiley-Medical). 1976. Chap 6, pp 97-111

121  
FRIEDMAN EA  
Obstetrical anesthetics and analgesics: what are the real risks to the fetus?  
(DOCUMENT NUMBER 00407)

Med World News 20: 93, 1979

122  
FRIEDMAN EA, KROLL BH  
Computer analysis of labour progression.  
(DOCUMENT NUMBER 00101)

J Obstet Gynaecol Brit Cwlth 76: 1075-1079, 1969

123  
FRIEDMAN EA, KROLL BH  
Computer analysis of labor progression.  
II. Distribution of data and limits of normal.  
(DOCUMENT NUMBER 00133)

J Reprod Med 6: 43-48, 1971

124  
FRIEDMAN EA, KROLL BH  
Computer analysis of labor progression.  
III. Pattern variations by parity.  
(DOCUMENT NUMBER 00134)

J Reprod Med 6: 63-67, 1971

125  
FRIEDMAN EA, KROLL BH  
Computer analysis of labor progression. IV. diagnosis of secondary arrest of dilatation.  
(DOCUMENT NUMBER 00181)

J Reprod Med 7: 176-178, 1971

126 FRIEDMAN EA, KROLL BH  
Computer analysis of labor progression. V. effects of fetal presentation and position.  
(DOCUMENT NUMBER 00182)

J Reprod Med 8: 117-121, 1972

127 FRIEDMAN EA, NEFF RK  
Hypertension-hypotension in pregnancy: correlation with fetal outcome.  
(DOCUMENT NUMBER 00318)

JAMA 239: 2249-2251, 1978

128 FRIEDMAN EA, NEFF RK  
Pregnancy Hypertension: A Systematic Evaluation of Clinical Diagnostic Criteria.  
(DOCUMENT NUMBER 00319)

Littleton, MA, PSG Publishing Co. Inc, 1977, pp 258

129 FRIEDMAN EA, NEFF RK  
Pregnancy outcome as related to hypertension, edema and proteinuria.  
(DOCUMENT NUMBER 00403)

In Hypertension In Pregnancy. Perspectives in Nephrology & Hypertension Series: Vol 5. MD Lindehimer (Ed), New York, John Wiley & Sons (Wiley-Interscience), 1976, pp 13-22

130 FRIEDMAN EA, NISHANDER KR, SACHTLEBEN MR  
Dysfunctional labor. XI. Neurologic and developmental effects on surviving infants.  
(DOCUMENT NUMBER 00078)

Obstet Gynecol 33: 785-791, 1969

131 FRIEDMAN EA, NISHANDER KR, SACHTLEBEN MR, ASHWORTH MR  
Dysfunctional labor. I.V. Delivery outcome.  
(DOCUMENT NUMBER 00116)

Am J Obstet Gynecol 106: 219-226, 1970



132 FRIEDMAN EA, NISHANDER KR, SACHTLEBEN MR, SACHTLEBEN MR, NAFTALY N  
Dysfunctional labor. (DOCUMENT NUMBER 00079)  
X. Immediate results to infant.

Obstet Gynecol 53: 776-784, 1969

133 FRIEDMAN EA, NISHANDER KR, SACHTLEBEN MR, NEMORE J  
Dysfunctional labor. (DOCUMENT NUMBER 00080)  
VIII. Relative accuracy of clinical and  
graphic diagnostic methods.

Obstet Gynecol 33: 145-152, 1969

134 FRIEDMAN EA, SACHTLEBEN MR, BRESKY PA  
Dysfunctional labor. XII. Long-term effects on infant. (DOCUMENT NUMBER 00320)

Am J Obstet Gynecol 127: 779-783, 1977

135 FRIEDMAN EA, SACHTLEBEN-MURRAY MR, DANROUGE D, HEIFF RK  
Long-term effects of labor and delivery on offspring: a  
matched-pair analysis. (DOCUMENT NUMBER 00567)

Am J Obstet Gynecol 150: 941-945, 1984

136 FROEHLICH LA, FUJIKURA T  
Significance of a single umbilical artery. (DOCUMENT NUMBER 00013)

Am J Obstet Gynecol 94: 274-279, 1966

137 FROEHLICH LA, FUJIKURA T  
Congenital malformations in perinatal,  
infant and child deaths. (DOCUMENT NUMBER 00071)

In Methods for Teratological Studies in Experimental  
Animals and Man. H Nishimura and JR Miller (Eds).  
The Second International Workshop in Teratology, Kyoto,  
1968. Tokyo, Japan, Igaku Shoin Ltd, 1969, pp 167-194.

- 138  
FROEHLICH LA, FUJIKURA T  
Follow-up of infants with single umbilical artery.  
Pediatrics 52: 6-13, 1973  
(DOCUMENT NUMBER 00238)
- 139  
FROEHLICH LA, FUJIKURA T, FISHER PD  
Chorangiomas and their clinical implications.  
Obstet Gynecol 37: 51-59, 1971  
(DOCUMENT NUMBER 00135)
- 140  
FROEHLICH LA, HOUSLER M  
Neonatal thrombocytopenia and chorangioma.  
J Pediatr 78: 516-519, 1971  
(DOCUMENT NUMBER 00136)
- 141  
FUCCILLO DA, SEVER JL, MODER FL, CHEN TC, CATALANI LW JR,  
JOHNSON LD  
Cytomegalovirus antibody in patients with carcinoma  
of the uterine cervix.  
Obstet Gynecol 38: 599-601, 1971  
(DOCUMENT NUMBER 00183)
- 142  
FUJIKURA T, BENSON RC, DRISCOLL SG  
The bipartite placenta and its clinical features.  
Am J Obstet Gynecol 107: 1013-1017, 1970  
(DOCUMENT NUMBER 00137)
- 143  
FUJIKURA T, CARLETON JH  
Unilateral thickening of fetal arteries on the  
placenta resembling arteriosclerosis.  
Am J Obstet Gynecol 100: 843-845, 1968  
(DOCUMENT NUMBER 00014)
- 144  
FUJIKURA T, FROEHLICH LA  
Diagnosis of sickling by placental examination.  
Am J Obstet Gynecol 100: 1122-1124, 1968  
(DOCUMENT NUMBER 00015)

5233-000

- 145  
FUJIKURA T, FROEHLICH LA  
The influence of race and other factors on  
pulmonary hyaline membranes.  
Am J Obstet Gynecol 95: 572-578. 1966  
(DOCUMENT NUMBER 00016)
- 146  
FUJIKURA T, FROEHLICH LA  
Intrauterine pneumonia in relation to birth weight and race.  
Am J Obstet Gynecol 97: 81-84. 1967  
(DOCUMENT NUMBER 00017)
- 147  
FUJIKURA T, FROEHLICH LA  
Twin placentation and zygosity.  
Obstet Gynecol 37: 34-43. 1971  
(DOCUMENT NUMBER 00158)
- 148  
FUJIKURA T, FROEHLICH LA  
Organ-weight/brain-weight ratios as a parameter of  
prenatal growth: a balanced growth theory of viscera.  
Am J Obstet Gynecol 112: 896-902. 1972  
(DOCUMENT NUMBER 00184)
- 149  
FUJIKURA T, FROEHLICH LA  
Birth weight, gestational age, and renal glomerular development  
as indices of fetal maturity.  
Am J Obstet Gynecol 113: 627-631. 1972  
(DOCUMENT NUMBER 00221)
- 150  
FUJIKURA T, FROEHLICH LA  
Mental and motor development in monozygotic co-twins  
with dissimilar birth weights.  
Pediatrics 53: 884-889. 1974  
(DOCUMENT NUMBER 00239)
- 151  
FUJIKURA T, FROEHLICH LA, DRISCOLL SO  
A simplified anatomic classification of abortions.  
Am J Obstet Gynecol 95: 902-905. 1966  
(DOCUMENT NUMBER 00018)

152 FUJIKURA T, KLIONSKY D (DOCUMENT NUMBER 00276)  
The Significance of meconium staining.

Am J Obstet Gynecol 121: 45-50, 1975

153 FUJIKURA T, KLIONSKY D (DOCUMENT NUMBER 00311)  
Transplacental passage of maternal erythrocytes with sickling.

J Pediatr 87: 781-783, 1975

154 GARN SM (DOCUMENT NUMBER 00471)  
Lower hematocrit levels in blacks are not due to diet or socioeconomic factors. (Letters to the Editor)

Pediatrics 67: 580, 1981

155 GARN SM (DOCUMENT NUMBER 00491)  
Optimal nutritional assessment.

In Nutrition and Growth, Vol 2. DB Jelliffe and JFP Jelliffe (Eds). New York, Plenum Press, 1979, Pt III, Chap 13, pp 273-298

156 GARN SM (DOCUMENT NUMBER 00481)  
Continuities and change in maturational timing.

In Coexistence and Change in Human Development. OG Brim and J Kegan (Eds). Cambridge, Harvard University Press, 1980, pp 111-162

157 GARN SM (DOCUMENT NUMBER 00482)  
Human growth.

Ann Rev Anthropol 9: 275-292, 1980

26 NINCDS COLLABORATIVE PERINATAL PROJECT BIBLIOGRAPHY

- 158 GARN SM, BAILEY SM  
Genetics of maturational processes.  
(DOCUMENT NUMBER 00494)  
In Human Growth, Vol 1. F Folker and JM Tanner (Eds),  
New York, Plenum Press, 1978, pp 307-330
- 159 GARN SM, COLE PE, BAILEY SM  
Living together as a factor in family-line resemblances.  
(DOCUMENT NUMBER 00492)  
Hum Biol 51: 565-587, 1979
- 160 GARN SM, HOFF K, McCABE KD  
Maternal fatness and placental size. (Letters to the Editor)  
(DOCUMENT NUMBER 00417)  
Am J Clin Nutr 32: 277-279, 1979
- 161 GARN SM, HOFF K, McCABE KD  
Is there nutritional mediation of the "smoking effect"  
on the fetus. (Letters to the Editor)  
(DOCUMENT NUMBER 00423)  
Am J Clin Nutr 32: 1181-1184, 1979
- 162 GARN SM, HOFF K, McCABE KD  
Effect of placental size on the progeny of obese women.  
(DOCUMENT NUMBER 00487)  
Ecology of Food and Nutrition 8: 67-69, 1979
- 163 GARN SM, JOHNSTON M, RIDELLA SA, PETZOLD AS  
Effect of maternal cigarette smoking on Apgar scores.  
(DOCUMENT NUMBER 00472)  
Am J Dis Child 135: 503-506, 1981
- 164 GARN SM, JOHNSTON M, RIDELLA SA, PETZOLD AS  
Reply to Cunningham: smoking and pregnancy. (Letters to the  
Editor)  
(DOCUMENT NUMBER 00550)  
Am J Dis Child 136: 82, 1982

- 165  
GARN SM, KEATING MT  
Effect of various prenatal determinants on  
size and growth through seven years.  
Ecol Food Nutr 9: 109-112, 1980  
(DOCUMENT NUMBER 00451)
- 166  
GARN SM, KEATING MT, FALKNER F  
Hematological status and pregnancy outcomes.  
(Letters to the Editor)  
Am J Clin Nutr 34: 115-117, 1981  
(DOCUMENT NUMBER 00473)
- 167  
GARN SM, LVELLE M, PESICK SD, RIDELELL SA  
Are pregnant teenagers still in rapid growth?  
Am J Dis Child 138: 32-34, 1984  
(DOCUMENT NUMBER 00551)
- 168  
GARN SM, OSBORNE RH, ALVESALO L, HORONITZ SI  
Maternal and gestational influences on deciduous and  
permanent tooth size.  
J Dent Res 59: 142-143, 1980  
(DOCUMENT NUMBER 00483)
- 169  
GARN SM, OSBORNE RH, MCCABE KD  
The effect of prenatal factors on crown dimensions.  
Am J Phys Anthropol 51: 665-677, 1979  
(DOCUMENT NUMBER 00446)
- 170  
GARN SM, PESICK SD  
Comparison of the Bann index and other body mass indices  
in nutritional assessment.  
Am J Clin Nutr 36: 573-575, 1982  
(DOCUMENT NUMBER 00478)
- 171  
GARN SM, PESICK SD  
Relationship between various maternal body mass measures  
and size of the newborn.  
Am J Clin Nutr 36: 664-668, 1982  
(DOCUMENT NUMBER 00479)

- 172  
GARN SM, PETZOLD AS  
Characteristics of the mother and child in teenage pregnancy.  
Am J Dis Child 137: 365-368, 1983  
(DOCUMENT NUMBER 00490)
- 173  
GARN SM, PETZOLD AS, RIDELLA SA, JOHNSTON M  
Effect of smoking during pregnancy and Apgar and Bayley  
scores. (Letters to the Editor)  
Lancet II: 912-913, 1980  
(DOCUMENT NUMBER 00484)
- 174  
GARN SM, RIDELLA SA, KRAMER A  
Effect of smoking during pregnancy on the mother and the  
conceptus.  
In Alternative Dietary Practices and Nutritional Abuses in  
Pregnancy. Proceedings of Workshop held by the National  
Academy of Sciences, June 2, 1981. Washington DC,  
National Academy Press, 1982, pp 160-190  
(DOCUMENT NUMBER 00480)
- 175  
GARN SM, RIDELLA SA, PETZOLD AS, FALKNER F  
Maternal hematologic levels and pregnancy outcomes.  
Semin Perinatol 5: 155-162, 1981  
(DOCUMENT NUMBER 00474)
- 176  
GARN SM, ROBINSON M, BAILEY SM  
Genetic and nutritional interactions.  
In Nutrition and Growth, Vol 2. DS Jelliffe and EFP Jelliffe  
(Eds), New York, Plenum Press, 1979, Pt I, Chap 2, pp 31-46  
(DOCUMENT NUMBER 00488)
- 177  
GARN SM, SHAN HA, COLE PE, OHEN GM, McCABE RD  
Reply to Hoobler and Munscher: hemoglobin differences between  
Blacks and whites. (Letters to the Editor)  
Am J Clin Nutr 30: 1935-1937, 1977  
(DOCUMENT NUMBER 00321)

- 178 GARN SM, SHAW HA, GUIRE KE, McCABE KD  
 Apportioning black-white hemoglobin and hematocrit differences during pregnancy. (Letters to the Editor)  
 Am J Clin Nutr 30: 461-462, 1977  
 (DOCUMENT NUMBER 00322)
- 179 GARN SM, SHAW HA, McCABE KD  
 Birth size and growth appraisal.  
 J Pediatr 90: 1049-1051, 1977  
 (DOCUMENT NUMBER 00323)
- 180 GARN SM, SHAW HA, McCABE KD  
 Relative effect of smoking and other variables on size of newborn. (Letters to the Editor)  
 Lancet II: 667, 1977  
 (DOCUMENT NUMBER 00324)
- 181 GARN SM, SHAW HA, McCABE KD  
 Black-White hemoglobin differences during pregnancy.  
 Ecology of Food and Nutr 5: 99-100, 1976  
 (DOCUMENT NUMBER 00325)
- 182 GARN SM, SHAW HA, McCABE KD  
 Effects of socioeconomic status and race on weight-defined and gestational prematurity in the United States. Proceedings of a working conference held at NICHD, NIH, Bethesda, Md, November 8-9, 1976  
 In The Epidemiology of Prematurity. DM Reed and FJ Stanley (Eds), Baltimore and Munich, Urban & Schwarzenberg, 1977, pp 127-143  
 (DOCUMENT NUMBER 00326)
- 183 GARN SM, SHAW HA, McCABE KD  
 Dose-response effect of maternal smoking. (Letters to the Editor)  
 Pediatrics 62: 861-862, 1978  
 (DOCUMENT NUMBER 00387)



30 NINCDS COLLABORATIVE PERINATAL PROJECT BIBLIOGRAPHY

- 184  
GARN SM, SHAW HA, McCABE KD  
Effect of socioeconomic status on early growth as measured  
by three different indicators.  
(DOCUMENT NUMBER 00388)  
Ecology of Food and Nutrition 7: 51-55, 1978
- 185  
GARN SM, SHAW HA, McCABE KD  
Effect of maternal smoking on hemoglobins and hematocrits  
of the newborn. (Letters to the Editor)  
(DOCUMENT NUMBER 00389)  
Am J Clin Nutr 31: 557-558, 1978
- 186  
GARN SM, SHAW HA, McCABE KD  
Effect of maternal smoking on weight and weight gain between  
pregnancies. (Letters to the Editor)  
(DOCUMENT NUMBER 00408)  
Am J Clin Nutr 31: 1302-1305, 1978
- 187  
GARN SM, SHAW HA, McCABE KD  
Maternal smoking as a nutritional variable.  
(DOCUMENT NUMBER 00409)  
Ecology of Food Nutrition 7: 143-145, 1978
- 188  
GARN SM, SHAW HA, McCABE KD  
Pregnant? No ifs, ands, or butts: facts and figures on the  
effects of maternal smoking.  
(DOCUMENT NUMBER 00434)  
Resident & Staff Physician 152-162, 1979
- 189  
GARN SM, SHAW HA, WAINRIGHT RL, McCABE KD  
The effect of sample size on normative values.  
(DOCUMENT NUMBER 00327)  
Ecology of Food and Nutr 6: 153-157, 1977

- 190  
GATES MJ  
Age: risk of seizures in infants.  
(DOCUMENT NUMBER 00259)
- In The Epidemiology of Epilepsy. A Workshop. M Alter and  
MA Hauser (Eds), NINDS MONOGR. 14, US DHEW, PHIS, NIH, NINDS,  
Wash., DC, US Govt. Print. Off., 1972, pp 75-81
- 191  
GATES MJ  
Prognosis of febrile seizures.  
(DOCUMENT NUMBER 00260)
- In The Epidemiology of Epilepsy. A Workshop. M Alter and  
MA Hauser (Eds), NINDS MONOGR. 14, US DHEW, PHIS, NIH, NINDS,  
Wash., DC, US Govt. Print. Off., 1972, pp 123-128
- 192  
GILLES FH  
Lesions attributed to perinatal asphyxia in the human.  
(DOCUMENT NUMBER 00452)
- In Intrauterine Asphyxia and the Developing Fetal Brain.  
L Gluck (Ed), Chicago and London, Year Book Medical  
Publishers, Inc. 1977, pp 99-107
- 193  
GILLES FH, LEVITON A, DOOLING EC  
The Developing Human Brain.  
(DOCUMENT NUMBER 00495)  
Boston, John Wright PSG Publishing Inc, 1983, pp 349
- 194  
GOFFENEY B, HENDERSON NB, BUTLER DV  
Negro-white, male-female eight-month developmental scores  
compared with seven-year NISC and Bender test scores.  
(DOCUMENT NUMBER 00214)  
Child Dev 42: 595-604, 1971
- 195  
GOLDSMITH MH, GOTTESMAN II  
Origins of variation in behavioral style: a longitudinal  
study of temperament in young twins.  
(DOCUMENT NUMBER 00496)  
Child Dev 52: 91-103, 1981

32 NICUS COLLABORATIVE PERINATAL PROJECT BIBLIOGRAPHY

196 GORDON M, NISHANDE KR, BERENDES HW, KANTOR AG (DOCUMENT NUMBER 00121)  
Fetal morbidity following potentially  
anoxic obstetric conditions.  
VII. Bronchial asthma.

Am J Obstet Gynecol 106: 421-429, 1970

197 GORDON M, RICH H, DEUTSCHBERGER J, GREEN M (DOCUMENT NUMBER 00268)  
The immediate and long-term outcome of obstetric birth trauma.  
I. Brachial plexus paralysis.

Am J Obstet Gynecol 117: 51-56, 1973

198 GREEN M, ALSTON FK, RICH H (DOCUMENT NUMBER 00308)  
Prenatal exposure to narcotics -- what is the risk of long-term  
damage to the central nervous system?

Pediatr Ann 4: 78-79, 82, 85, 1975

199 GROUSE LD (DOCUMENT NUMBER 00453)  
Hidden bias in research design. (Editorial)

JAMA 243: 1365, 1980

200 HANSON JW, MYRIANTHOPOULOS HC, HARVEY MAS, SMITH DW (DOCUMENT NUMBER 00328)  
Risks to the offspring of women treated with hydantoin  
anticonvulsants, with emphasis on the fetal hydantoin syndrome.

J Pediatr 89: 662-668, 1976

201 HANSON JW, SMITH DW (DOCUMENT NUMBER 00329)  
Reply to Are hydantoins (phenytoins) human teratogens? (Letters  
to the Editor)

J Pediatr 90: 674-675, 1977

202 HANSON JM, SMYTH DW (DOCUMENT NUMBER 00330)  
Reply to fetal growth deficiency: the causes. (Letters to the Editor).

J Pediatr 90: 675-676, 1977

203 HARDY JB (DOCUMENT NUMBER 00167)  
The Johns Hopkins collaborative perinatal project: descriptive background.

Johns Hopkins Med J 128: 238-243, 1971

204 HARDY JB (DOCUMENT NUMBER 00168)  
Rubella as a teratogen.

Birth Defects: Original Article Series: 7, Part 1, Nervous System 1971, pp 64-71

205 HARDY JB (DOCUMENT NUMBER 00198)  
The Johns Hopkins collaborative perinatal project. Part II. Cord serum immunoglobulin levels and long-range fetal outcome.

Johns Hopkins Med J 128: 297-305, 1971

206 HARDY JB (DOCUMENT NUMBER 00262)  
Birth weight and subsequent physical and intellectual development. (Letters to the Editor)

N Engl J Med 289: 973-974, 1973

207 HARDY JB (DOCUMENT NUMBER 00263)  
Clinical and developmental aspects of congenital rubella.

Arch Otolaryngol 98: 230-236, 1973

34 NINCDS COLLABORATIVE PERINATAL PROJECT BIBLIOGRAPHY

- 208 HARDY JB  
Congenital rubella.  
(DOCUMENT NUMBER 00287)  
In The Eye in Systemic Disease. SJ Ryan, Jr. and RE Smith (Eds),  
New York, Grune & Stratton, 1974, Ch. 11, pp 195-204
- 209 HARDY JB, DRAGE JS, JACKSON EC  
The First Year of Life.  
(DOCUMENT NUMBER 00404)  
Baltimore, Md, The Johns Hopkins University Press, 1979, pp 336
- 210 HARDY JB, HARDY NG, HARDY MP  
Some problems in neonatal screening.  
(DOCUMENT NUMBER 00169)  
Trans Am Acad Ophthalmol Otolaryngol 74: 1229-1235, 1970
- 211 HARDY JB, McCracken GH Jr, GILKESON MR, SEVER JI.  
Adverse fetal outcome following maternal rubella  
after the first trimester of pregnancy.  
(DOCUMENT NUMBER 00083)  
JAMA 207: 2414-2420, 1969
- 212 HARDY JB, McCracken GH Jr, MELLITS ED, GILKESON MR, SEVER JI  
Serum immunoglobulin levels in newborn infants.  
III. Some preliminary observations from a survey  
of cord blood levels in 2,600 infants.  
(DOCUMENT NUMBER 00118)  
J Pediatr 75: 1211-1223, 1969
- 213 HARDY JB, MELLITS ED  
Does maternal smoking during pregnancy have a long-term effect  
on the child?  
(DOCUMENT NUMBER 00229)  
Lancet II: 1-13, 1972

- 214  
 HARDY JB, MELLITS ED  
 (DOCUMENT NUMBER 00331)  
 Relationship of low birth weight to maternal characteristics of age, parity, education and body size. Proceedings of a working conference held at NICHD, NIH, Bethesda, Maryland, November 8-9, 1976
- In The Epidemiology of Prematurity. DM Reed and FJ Stanley (Eds), Baltimore and Munich, Urban & Schwarzenberg, 1977, pp 105-117
- 215  
 HARDY JB, MELLITS ED  
 (DOCUMENT NUMBER 00332)  
 Comments in "Closing Discussion." Proceedings of a working conference held at NICHD, NIH, Bethesda, Md, November 8-9, 1976
- In The Epidemiology of Prematurity. DM Reed and FJ Stanley (Eds), Baltimore and Munich, Urban & Schwarzenberg, 1977, pp 349-365
- 216  
 HARDY JB, PEEPLES MO  
 (DOCUMENT NUMBER 00170)  
 Serum bilirubin levels in newborn infants. Distributions and associations with neurological abnormalities during the first year of life.
- Johns Hopkins Med J 128: 265-272. 1971
- 217  
 HARDY JB, SEVER JL  
 (DOCUMENT NUMBER 00084)  
 Indirect inguinal hernia in congenital rubella.
- J Pediatr 73: 416-418. 1968
- 218  
 HARDY JB, SEVER JL, GILKESON MR  
 (DOCUMENT NUMBER 00119)  
 Declining antibody titers in children with congenital rubella.
- J Pediatr 75: 215-220. 1969
- 219  
 HARDY JB, WELCHER DW, MELLITS ED, KAGAN J  
 (DOCUMENT NUMBER 00333)  
 Pitfalls in the measurement of intelligence: are standard intelligence tests valid instruments for measuring the intellectual potential of urban children?
- J Psychol 94: 43-51. 1976

5244

220 HARDY MP, MELLITS ED, WILLIG SN (DOCUMENT NUMBER 00199)

Reading: a function of language usage.

Johns Hopkins Med J 129: 43-53, 1971

221 HARTZ SC, HEINONEN OP, SHAPIRO S, SISKIND V, SLONE D (DOCUMENT NUMBER 00285)

Antenatal exposure to meprobamate and chloridiazepoxide in relation to malformations, mental development, and childhood mortality.

N Engl J Med 292: 726-728, 1975

222 HARTZ SC, ROSENBERG L, HEINONEN OP, SLONE D, SHAPIRO S (DOCUMENT NUMBER 00286)

Epidemiologic screening of multiple risk factors in relation to multiple congenital malformations: a statistical approach. (Abstract)

Teratology 10: 311, 1974

223 HAVLIK RJ, GARRISON RJ, KATZ SH, ELLISON RC, FEINLEIB M, MYRIANTHOPOULOS NC (DOCUMENT NUMBER 00424)

Detection of genetic variance in blood pressure of seven-year-old twins.

Am J Epidemiol 109: 512-516, 1979

224 HEINONEN OP (DOCUMENT NUMBER 00224)

Diethylstilbestrol in pregnancy: frequency of exposure and usage patterns.

Cancer 31: 573-577, 1973

225 HEINONEN OP (DOCUMENT NUMBER 00435)

Risk factors for congenital heart disease: a prospective study.

In Birth Defects: Risks and Consequences. S Kelly, EB Hook, DT Janerich, IH Porter (Eds), New York, NY, Academic Press Inc. 1976, pp 221-264

- 226 HEINONEN OP, SHAPIRO S, MONSON RR, HARTZ SC, ROSENBERG L, SLONE D  
 (DOCUMENT NUMBER 00250)  
 Immunization during pregnancy against poliomyelitis and  
 influenza in relation to childhood malignancy.  
 Int J Epidemiol 2: 229-235, 1973
- 227 HEINONEN OP, SLONE D, MONSON RR, HOOK LB, SHAPIRO S  
 (DOCUMENT NUMBER 00335)  
 Cardiovascular birth defects and antenatal exposure to female sex  
 hormones.  
 N Engl J Med 296: 67-70, 1977
- 228 HEINONEN OP, SLONE D, SHAPIRO S  
 (DOCUMENT NUMBER 00334)  
 Birth Defects and Drugs in Pregnancy.  
 Littleton, MA, PSO Publishing Co. Inc, 1977, 516 pp
- 229 HENDERSON NB, BUTLER BV, CLARK NM Jr  
 (DOCUMENT NUMBER 00235)  
 Relationships between selected perinatal variables and seven-year  
 intelligence.  
 In Proceedings, 79th Annual Convention, APA, Washington, D.C.,  
 Sept. 3-7, 1971, pp 139-140
- 230 HENDERSON NB, BUTLER BV, GOFFENEY B  
 (DOCUMENT NUMBER 00092)  
 Is the Bender-Gesalt test effective in predicting arithmetic and  
 reading achievement of seven year old white and nonwhite children.  
 Proceedings, 76th Annual Convention, American Psychological  
 Association, San Francisco, California, Aug. 30-Sept. 3, 1968.  
 S: 589-590, 1968
- 231 HENDERSON NB, BUTLER BV, GOFFENEY B  
 (DOCUMENT NUMBER 00125)  
 Effectiveness of the WISC and Bender-Gesalt test in  
 predicting arithmetic and reading achievement for  
 white and nonwhite children.  
 J Clin Psychol 25: 268-271, 1969



38 NINCDS COLLABORATIVE PERINATAL PROJECT BIBLIOGRAPHY

232 HENDERSON NB, BUTLER BV, GOFFENEY B, SAITO CH, CLARKSON QD  
(DOCUMENT NUMBER 00215)  
Sex of person drawn by Japanese, Navajo, American white, and  
Negro seven-year-olds.

J Pers Assess 35: 261-264, 1971

233 HENDERSON NB, ENGEL R  
(DOCUMENT NUMBER 00272)  
Neonatal visual evoked potentials as predictors of  
psychoeducational tests at age seven.

Dev Psychol 10: 269-276, 1974

234 HENDERSON NB, FAY NH, LINDEMANN SJ, CLARKSON QD  
(DOCUMENT NUMBER 00273)  
Will the IQ test be decrease the effectiveness  
of reading prediction.

J Educ Psychol 65: 345-355, 1973

235 HENDERSON NB, GOFFENEY B, BUTLER BV  
(DOCUMENT NUMBER 00126)  
Do Negro children project a self-image of helplessness  
and inadequacy in drawing a person?

Proceedings of the 77th Annual Convention American Psychological  
Association, Washington, DC, Aug. 31- Sept. 4, 1969.  
4: 437-438, 1969

236 HENDERSON NB, GOFFENEY B, BUTLER BV, CLARKSON QD  
(DOCUMENT NUMBER 00236)  
Differential rates of school promotion from first grade for white  
and Negro, male and female 7-year olds.

Psychol Schools 8: 101-109, 1971

237 HERBST AL  
(DOCUMENT NUMBER 00447)  
Coltus and the fetus. (Letters to the Editor)

N Engl J Med 301: 1235-1236, 1979

- 238  
 HIRTZ DG, NELSON KB  
 The natural history of febrile seizures.  
 Ann Rev Med 34: 453-471 1983  
 (DOCUMENT NUMBER 00497)
- 239  
 HIRTZ DG, NELSON KB  
 Cognitive effects of antiepileptic drugs.  
 In Recent Advances in Epilepsy, No 2. TA Pedley and BS  
 Meldrum (Eds), New York, Churchill Livingstone, 1985, ch 8,  
 pp161-181  
 (DOCUMENT NUMBER 00564)
- 240  
 HIRTZ DG, NELSON KB, ELLENBERG JH  
 Seizures following childhood immunizations.  
 J Pediatr 102: 14-18, 1983  
 (DOCUMENT NUMBER 00498)
- 241  
 HIRTZ DG, NELSON KB, ELLENBERG JH  
 Reply to Coplan: seizures following immunizations. (Letters  
 to the Editor)  
 J Pediatr 103: 496, 1983  
 (DOCUMENT NUMBER 00553)
- 242  
 HOEKELMAN RA  
 A new perspective on sudden infant death syndrome. (Commentaries)  
 Am J Dis Child 130: 1191-1192, 1976  
 (DOCUMENT NUMBER 00336)
- 243  
 HOLDEN KR, MELLITS ED, FREEMAN JM  
 Neonatal seizures.  
 I. Correlation of prenatal and perinatal events with outcomes.  
 Pediatrics 70: 165-176, 1982  
 (DOCUMENT NUMBER 00500)
- 244  
 HOLDEN RH  
 Prediction of mental retardation in infancy.  
 Ment Retard 10: 28-30, 1972  
 (DOCUMENT NUMBER 00190)

40 NINCDS COLLABORATIVE PERINATAL PROJECT BIBLIOGRAPHY

- 245  
HOLDEN RH, MENDELSON MA, DEVAULT S  
Relationship of the MAIS to the SRA non-verbal test scores.  
Psychol Rep 19: 987-990, 1966  
(DOCUMENT NUMBER 00039)
- 246  
HOLDEN RH, WILLERMAN L  
Neurological abnormality in infancy, intelligence, and social  
class.  
In Readings on the Exceptional Child, Second Edition. EP Trapp  
and P Himelstein (Eds). New York, Appleton-Century-Crofts,  
1972, pp 501-511  
(DOCUMENT NUMBER 00227)
- 247  
HOLLEY WL, CHURCHILL JA  
Physical and mental deficits of twinning.  
In Perinatal Factors Affecting Human Development. Proceedings of  
the Special Session of the Eighth Meeting of the Pan American  
Health Organization Advisory Committee on Medical Research,  
June 10, 1969. Washington DC, Sci Publ No 185, 1969, pp 24-29  
(DOCUMENT NUMBER 00102)
- 248  
HOLLEY WL, ROSENBAUM AL, CHURCHILL JA  
Effect of rapid succession of pregnancy.  
In Perinatal Factors Affecting Human Development. Proceedings of  
the Special Session of the Eighth Meeting of the Pan American  
Health Organization Advisory Committee on Medical Research,  
June 10, 1969. Washington DC, Sci Publ No 185, 1969, pp 41-44  
(DOCUMENT NUMBER 00103)
- 249  
HOEBLER IM, HUNSCHER MA  
Hemoglobin differences between blacks and whites. (Letters to the  
Editor)  
Am J Clin Nutr 30: 1955, 1977  
(DOCUMENT NUMBER 00337)
- 250  
HOOK EB, HEINONEN OP, SHAPIRO S, SLOANE D  
Maternal exposure to oral contraceptives and other female sex  
hormones: Relation to birth defects in a prospectively  
ascertained cohort of 50,282 pregnancies. (Abstract)  
Teratology 9: A-21, 1974  
(DOCUMENT NUMBER 00251)

251 HORTA-BARBOSA L, FUCCILLO DA, SEVER JL  
 Rubella virus. (DOCUMENT NUMBER 00072)

In Current Topics in Microbiology & Immunology. M Arber (Ed),  
 Berlin, Springer-Verlag, 1969, Vol 47, pp 69-81

252 HUBBELL JP, MUIRHEAD DM Jr, DRORBAUGH JE  
 The newborn infant of the diabetic mother.  
 Med Clin North Am 49: 1035-1052, 1965 (DOCUMENT NUMBER 00037)

253 HUTTENLOCHER PR  
 Natural course of febrile seizures. (Letters to the Editor)  
 Pediatrics 65: 680, 1980 (DOCUMENT NUMBER 00539)

254 IRETON H, THNING E, GRAVEN HJ  
 Infant mental development and neurological status, family  
 socioeconomic status, and intelligence at age four.  
 Child Dev 41: 937-945, 1970 (DOCUMENT NUMBER 00173)

255 ISRAEL SL, DEUTSCHBERGER J  
 Relation of the mother's age to obstetric performance.  
 Obstet Gynecol 20: 67-69, 1965 (DOCUMENT NUMBER 00059)

256 JAYALAKSHMI P, SCOTT TFMcN, TUCKER SH, SCHAEFFER DB  
 Infantile nystagmus: a prospective study of spasmus nutans,  
 congenital nystagmus, and unclassified nystagmus of infancy.  
 J Pediatr 77: 177-187, 1970 (DOCUMENT NUMBER 00161)

257 JENSEN DR, ENGEL R  
 Statistical procedures for relating dichotomous responses  
 to maturation and EEG measurements.  
 Electroencephalogr Clin Neurophysiol 30: 437-443, 1971 (DOCUMENT NUMBER 00216)

5255 -

- 258 JONES KL, SMITH DW, STREISSGUTH AP, MYRIANTHOPOULOS NC  
Outcome in offspring of chronic alcoholic women.  
Lancet 1: 1076-1078, 1974  
(DOCUMENT NUMBER 00240)
- 259 KEMPER TL, LECOURS AR, GATES MJ, YAKOVLEV PI  
Retardation of the myelo- and cytoarchitectonic maturation  
of the brain in the congenital rubella syndrome.  
Early Dev, Res Publ. ARNMD 51: 23-62, 1973  
(DOCUMENT NUMBER 00261)
- 260 KLATSKIN EH, MCGARRY ME, STEWARD MS  
Variability in developmental test pattern  
as a sequel of neonatal stress.  
Child Dev 37: 819-826, 1966  
(DOCUMENT NUMBER 00067)
- 261 KLEBANOFF MA, GRAUBARD BI, KESSEL SS, BEREHDES HW  
Low birth weight across generations.  
JAMA 252: 2423-2427, 1984  
(DOCUMENT NUMBER 00560)
- 262 KLEBANOFF MA, NUGENT RP, RHOADS GG  
Colitus during pregnancy: is it safe?  
Lancet II: 914-917, 1984  
(DOCUMENT NUMBER 00561)
- 263 KOLATA GB  
Obstetrical medication study. (Letters to the Editor)  
Science 205: 447, 1979  
(DOCUMENT NUMBER 00425)
- 264 KORONES SB, TODARO J, ROANE JA, SEVER JL  
Pediatric outcome to four years of age  
after gestational virus infection. (Abstract)  
Proceedings of 3rd International Conference on Congenital  
Malformations, The Hague, September 7-13, 1969. Excerpta  
Medica International Congress Series No. 191, 1969, p 55  
(DOCUMENT NUMBER 00129)

265 KORONES SB, TODARO J, ROANE JA, SEVER JL  
 Maternal virus infection after the first trimester of pregnancy  
 and status of offspring to 4 years of age in a predominantly  
 Negro population. (DOCUMENT NUMBER 00175)

J Pediatr 77: 245-251, 1970

266 KRANITZ MA, WELCHER DW  
 The Johns Hopkins Collaborative perinatal project.  
 Part III. Behavioral Characteristics of twins. (DOCUMENT NUMBER 00200)

Johns Hopkins Med J 129: 1-5, 1971

267 KURENT JE, SEVER JL  
 Perinatal infections and epidemiology of anencephaly  
 and spina bifida. (DOCUMENT NUMBER 00241)

Teratology 8: 359-362, 1973

268 LAGA EM, DRISCOLL SG, MUHRO MN  
 Quantitative studies of human placentas: I. Morphometry. (DOCUMENT NUMBER 00254)

Biol Neonate 23: 231-259, 1973

269 LAMB ME, GARN SM, KEATING MT  
 Correlations between sociability and cognitive performance  
 among eight-month-olds. (DOCUMENT NUMBER 00501)

Child Dev 52: 711-713, 1981

270 LASSMAN FM, FISCH RO, VETTER DK, LABENZ ES, LABENZ RJ, LABENZ ES  
 Early Correlates of Speech, Language, and Hearing. (DOCUMENT NUMBER 00654)

Littleton, MA, PSG Publishing Co, 1980, pp 858.

44 NINCDS COLLABORATIVE PERINATAL PROJECT BIBLIOGRAPHY

- 271  
LEVI HS, WELCHER DM  
Social class and race as determinants of the sex  
of human fetuses drawn by seven-year-olds.  
Johns Hopkins Med J 129: 10-18, 1971  
(DOCUMENT NUMBER 00201)
- 272  
LEVINE RL  
Bilirubin: worked out years ago? (Commentaries)  
Pediatrics 64: 380-385, 1979  
(DOCUMENT NUMBER 00455)
- 273  
LEVITON A, GILLES FH  
Maternal urinary-tract infections and fetal  
leukoencephalopathy. (Letters to the Editor)  
N Engl J Med 301: 661, 1979  
(DOCUMENT NUMBER 00436)
- 274  
LILLEN AA  
Term intrapartum fetal death.  
Am J Obstet Gynecol 107: 595-603, 1970  
(DOCUMENT NUMBER 00104)
- 275  
LITTLE HA  
Progress report on the MINDD collaborative project.  
Proceedings of the AMA Conference on Maternal and Perinatal  
Mortality and Morbidity, The Greenbrier, White Sulphur Springs,  
West Virginia, October 1963, pp 84-94  
(DOCUMENT NUMBER 00019)
- 276  
LITTLE HA, FRIEDMAN EA  
Significance of the placental position.  
A report from the collaborative study of cerebral palsy.  
Obstet Gynecol 23: 804-809, 1964  
(DOCUMENT NUMBER 00020)
- 277  
LIVINGSTON S, PAULI LL, PRUCE I  
What are nonepileptic seizures? (Letters to the Editor)  
Pediatrics 65: 676, 1980  
(DOCUMENT NUMBER 00555)

278 LOBL M, HELCHER DM, MELLITS ED  
 Maternal age and intellectual functioning of offspring.  
 (DOCUMENT NUMBER 00202)

Johns Hopkins Med J 128: 347-361, 1971

279 LUBS HA, PATIL SR, KIMBERLING NJ, BROWN J, COHEN MM, GERALD PS,  
 HECHT F, MOORHEAD P, MYRIANTHOPOULOS NC, SUMMITT RL  
 Correlations between low IQ, race and variations in Q and C  
 banding. (Abstract)  
 (DOCUMENT NUMBER 00242)

Am J Hum Genet 25: 47A, 1973

280 LUBS HA, PATIL SR, KIMBERLING NJ, BROWN J, COHEN MM, GERALD PS,  
 HECHT F, MOORHEAD P, MYRIANTHOPOULOS NC, SUMMITT RL  
 Chromosomal abnormalities ascertained in the collaborative  
 perinatal survey of 7- and 8-year old children.  
 (DOCUMENT NUMBER 00410)

Birth Defects: Original Article Series XV:1, 191-202, 1979

281 LUBS HA, PATIL SR, KIMBERLING NJ, BROWN J, COHEN MM, GERALD PS,  
 HECHT F, MYRIANTHOPOULOS NC, SUMMITT RL  
 Q and C banding polymorphisms in 7 and 8 year old children:  
 racial differences and clinical significance. Proceedings  
 of a symposium on Human Population Cytogenetics held in  
 Albany, NY, October 14-15, 1975  
 (DOCUMENT NUMBER 00338)

In Population Cytogenetic: Studies in Humans.  
 EB Hook and IH Porter (Eds). New York, San Francisco, London,  
 Academic Press, 1977, pp 133-159

282 MADSEN DL, MATTHEW EB, DIETZMAN DE, PURCELL RH, SEVER JL,  
 ROSTAFINSKI H, MATA A  
 Hepatitis and Down's Syndrome.  
 (DOCUMENT NUMBER 00299)

Am J Ment Defic 80: 401-106, 1976

283 MAN EB  
 Thyroid function in pregnancy and infancy. Maternal  
 hypothyroxinemia and retardation of progeny.  
 (DOCUMENT NUMBER 00228)

Clin Laboratory Sci, Chemical Rubber Co 3: 203-225, 1972



- 284  
MAN EB  
Maternal hypothyroxinemia: development of 6- and 7-year old offspring.  
(DOCUMENT NUMBER 00339)
- In Perinatal Thyroid Physiology and Disease. IIA Fisher and GN Burrow (Eds), New York, Raven Press, 1975, pp 117-132
- 285  
MAN EB, HOLDEN RH, JONES MS  
Thyroid function in human pregnancy.  
VII. Development and retardation of 6-year-old progeny of euthyroid and of hypothyroxinemic women.  
(DOCUMENT NUMBER 00157)
- Am J Obstet Gynecol 109: 12-19, 1971
- 286  
MAN EB, JONES MS, HOLDEN RH, MELLITS ED  
Thyroid function in human pregnancy.  
VIII. Retardation of progeny aged 7 years; relationships to maternal age and maternal thyroid function.  
(DOCUMENT NUMBER 00191)
- Am J Obstet Gynecol 111: 905-916, 1971
- 287  
MAN EB, SERUNIAN SA  
Thyroid function in human pregnancy. IX. Development or retardation of 7-year-old progeny of hypothyroxinemic women.  
(DOCUMENT NUMBER 00340)
- Am J Obstet Gynecol 125: 949-957, 1976
- 288  
MARMOL JG  
Cases of eclampsia in the collaborative project.  
(DOCUMENT NUMBER 00139)
- Schweitz Z Gynak Geburtsh 1: 169-180, 1970
- 289  
MARMOL JG, SCRIGGINS AL, VOLLMAN RF  
Mothers of mongoloid infants in the collaborative project.  
(DOCUMENT NUMBER 00073)
- Am J Obstet Gynecol 104: 533-543, 1969

290 MARMOL JG, VOLLMAN RF, GORDON M, PATTERSON SP, REID WA  
 (DOCUMENT NUMBER 00021)  
 Maternal death and high-risk pregnancy: an analysis of 40  
 maternal deaths in the collaborative project.  
 Obstet Gynecol 30: 816-820, 1967

291 McCRACKEN GH Jr, CHEN TC, HARDY JB, TZAN N  
 (DOCUMENT NUMBER 00085)  
 Serum immunoglobulin levels in newborn infants.  
 I. Evaluation of a radial diffusion plate method.  
 J Pediatr 74: 378-382, 1969

292 McCRACKEN GH Jr, HARDY JB, CHEN TC, MOFFMAN J, KESON MR,  
 SEVER JL (DOCUMENT NUMBER 00086)  
 Serum immunoglobulin levels in newborn infants.  
 II. Survey of cord and follow-up sera from 125  
 infants with congenital rubella.  
 J Pediatr 74: 383-392, 1969

293 McCRACKEN GH Jr, HARDY JB, CHEN TC, SEVER JL  
 (DOCUMENT NUMBER 00120)  
 Evaluation of a radial diffusion plate method  
 for determining serum immunoglobulin levels  
 in normal and congenitally infected infants.  
 J Pediatr 75: 1204-1210, 1969

294 McFALLS Jr JA (DOCUMENT NUMBER 00341)  
 Social science and the collaborative perinatal project: an  
 opportunity for research.  
 Public Data Use 4: 37-47, 1976

295 MELLITS ED (DOCUMENT NUMBER 00203)  
 Relationships between cord serum immunoglobulin levels and later  
 abnormalities. Is neonatal screening for IGM a worthwhile  
 procedure?  
 Johns Hopkins Med J 128: 306-317, 1971

5233

- 296 MELLITS ED, HARDY JB  
Information pertaining to birth weight, gestational age, placental weight and mortality. Proceedings of a working conference held at NICHD, NIH, Bethesda, Md, November 8-9, 1976  
(DOCUMENT NUMBER 00342)
- In The Epidemiology of Prematurity. DM Reed and FJ Stanley (Eds), Baltimore and Munich, Urban & Schwarzenberg, 1977, pp 119-125
- 297 MELLITS ED, HOLDEN KR, FREEMAN JM  
Neonatal seizures.  
II. A multivariate analysis of factors associated with outcome.  
Pediatrics 70: 177-185, 1982  
(DOCUMENT NUMBER 00502)
- 298 MELNICK M  
Brain damage in survivor after in-utero death of monozygous co-twin. (Letters to the Editor)  
Lancet II: 1287, 1977  
(DOCUMENT NUMBER 00390)
- 299 MELNICK M, MYRIANTHOPOULOS NC  
External Ear Malformations: Epidemiology, Genetics, and Natural History.  
The National Foundation, Birth Defects: Original Article Series. Vol. XV, No. 9, New York, Alan R Liss, Inc. 1979, pp 146  
(DOCUMENT NUMBER 00426)
- 300 MELNICK M, MYRIANTHOPOULOS NC  
The effects of chorion type on normal and abnormal developmental variation in monozygous twins.  
Am J Med Genet 4: 147-156, 1979  
(DOCUMENT NUMBER 00437)
- 301 MELNICK M, MYRIANTHOPOULOS NC, CHRISTIAN JC  
The effects of chorion type on variation in I. in the NCPP twin population.  
Am J Hum Genet 30: 425-433, 1978  
(DOCUMENT NUMBER 00399)

- 302  
 MELHICK M, MYRIANTHOPOULOS NC, CHRISTIAN JC  
 Estimates of genetic variance for anterior fontanelle  
 development in the NCPP twin population.  
 Acta Genet Med Gemellol 29: 151-155, 1980  
 (DOCUMENT NUMBER 00503)
- 303  
 MERRITT TA  
 Smoking mothers affect little lives.  
 Am J Dis Child 135: 501-502, 1981  
 (DOCUMENT NUMBER 00504)
- 304  
 MERRITT TA, LAWRENCE RA, HAEYE RL  
 The infants of adolescent mothers.  
 Pediatr Ann 9: 32-49, 1980  
 (DOCUMENT NUMBER 00456)
- 305  
 MEYER MB  
 Effects of maternal smoking and altitude on birth weight and  
 gestation. Proceedings of a working conference held at NICHD, NIH,  
 Bethesda, Maryland, November 8-9, 1976  
 In The Epidemiology of Prematurity. DM Reed and FJ Stanley (Eds),  
 Baltimore and Munich, Urban & Schwarzenberg, 1977, pp 81-104  
 (DOCUMENT NUMBER 00343)
- 306  
 MEYER-BAHLBURG HFL, EHRHARDT AA  
 Effects of prenatal hormone treatment on mental abilities.  
 In Progress in Sexology. R Gemme and CC Wheeler (Eds),  
 New York, London, Plenum Press, 1977, pp 85-92  
 (DOCUMENT NUMBER 00344)
- 307  
 MEYER-BAHLBURG HFL, GRISANTI GC, EHRHARDT AA  
 Prenatal effects of sex hormones on human male behavior:  
 medroxyprogesterone acetate (MPA).  
 Psychoneuroendocrinology 2: 383-390, 1977  
 (DOCUMENT NUMBER 00345)

50 MINCDS COLLABORATIVE PERINATAL PROJECT BIBLIOGRAPHY

- 308 MILLER MC (DOCUMENT NUMBER 00346)  
Fetal growth deficiency: the cause. (Letters to the Editor)  
J Pediatr 90: 675, 1977
- 309 MITCHELL SC, BERENDES HW, CLARK WM Jr (DOCUMENT NUMBER 00022)  
The normal closure of the ventricular septum.  
Am Heart J 73: 334-338, 1967
- 310 MITCHELL SC, FROELICH LA, BANAS JS, GILKESON MR (DOCUMENT NUMBER 00023)  
An epidemiologic assessment of primary  
endocardial fibroelastosis.  
Am J Cardiol 18: 859-866, 1966
- 311 MITCHELL SC, KORONES SB, BERENDES HW (DOCUMENT NUMBER 00140)  
Congenital heart disease in 56,109 births.  
Incidence and natural history.  
Circulation 43: 323-332, 1971
- 312 MITCHELL SC, SELLMANN AH, WESTPHAL MC, PARK J (DOCUMENT NUMBER 00193)  
Etiologic correlates in a study of congenital heart disease in  
56,109 births.  
Am J Cardiol 28: 653-657, 1971
- 313 MONIF GRG, HARDY JB, SEVER JL (DOCUMENT NUMBER 00024)  
Studies in congenital rubella, Baltimore 1964-65.  
I. Epidemiologic and virologic.  
Bull Johns Hopkins Hospital 118: 85-96, 1964.

- 314  
 MONIF GRG, SEVER JL, COCHRAN HD  
 The H-1 and the XV viruses and pregnancy: serological study of certain groups of pregnant women. A report from the collaborative study of cerebral palsy.  
 J Pediatr 67: 253-256, 1965  
 (DOCUMENT NUMBER 00025)
- 315  
 MOHSON RR, ROSENBERG L, HARTZ SC, SHAPIRO S, HEINONEN OP, SLOANE D  
 Diphenylhydantoin and selected congenital malformations.  
 N Engl J Med 289: 1049-1052, 1973  
 (DOCUMENT NUMBER 00252)
- 316  
 MOORE M, HELCHER DH  
 A descriptive analysis of the seven-year psychological data.  
 Johns Hopkins Med J 128: 332-346, 1971  
 (DOCUMENT NUMBER 00204)
- 317  
 MYRIANTHOPOULOS NC  
 Role of maternal factors in the occurrence of congenital malformations and other abnormalities of childhood. (Abstract)  
 Proceedings of the 3rd International Conference on Congenital Malformations. The Hague, Sept. 7-13, 1969. Excerpta Medica, International Congress Series No. 191, 1969, p 66  
 (DOCUMENT NUMBER 00105)
- 318  
 MYRIANTHOPOULOS NC  
 A survey of twins in the population of a prospective collaborative study.  
 Acta Genet Med Gemello 19: 15-23, 1970  
 (DOCUMENT NUMBER 00141)
- 319  
 MYRIANTHOPOULOS NC  
 An epidemiologic survey of twins in a large, prospectively studied population.  
 Am J Hum Genet 22: 611-629, 1970  
 (DOCUMENT NUMBER 00142)

52 NINCDS COLLABORATIVE PERINATAL PROJECT BIBLIOGRAPHY

320 MYRIANTHOPOULOS NC (DOCUMENT NUMBER 00243)

Maternal factors influencing risk of epilepsy.

In The Epidemiology of Epilepsy. A Workshop. H Alter and  
WA Hauser (Eds). NINCDS MONOGR. 14. US DHEW. PHS. NINDS,  
Wash., DC, US Govt. Print. Off., 1972, pp 103-107

321 MYRIANTHOPOULOS NC (DOCUMENT NUMBER 00277)

Congenital malformations in twins. (Abstract)

Acta Genet Med Gemello 25: 57-58, 1974

322 MYRIANTHOPOULOS NC (DOCUMENT NUMBER 00300)

Congenital malformations in twins: epidemiologic survey.

Birth Defects: Original Article Series: XI, 8, 1975  
pp. 1-39

323 MYRIANTHOPOULOS NC (DOCUMENT NUMBER 00347)

Concepts, definitions and classification of congenital and  
developmental malformations of the central nervous system  
and related structures.

In Handbook of Clinical Neurology. FJ Vinken and GH Bruyn (Eds),  
Vol 30: Congenital Malformations of the Brain and Skull.  
Amsterdam, New York, Oxford, North-Holland Publishing Co,  
1977, Part 1, Chap 1, pp 1-13

324 MYRIANTHOPOULOS NC (DOCUMENT NUMBER 00348)

Congenital malformations in twins. Proceedings of the First  
International Congress on Twin Studies held in Rome October 28-  
November 2, 1974.

Acta Genet Med Gemello 25: 331-335. 1976

- 325 MYRIANTHOPOULOS NC  
Epidemiology of central nervous system malformations. (DOCUMENT NUMBER 00349)  
In Handbook of Clinical Neurology, Vol. 30: Congenital Malformations of the Brain and Skull. PJ Vinken and GH Bruyn (Eds). Amsterdam, New York, Oxford, North-Holland Publishing Co, 1977, Part 1, Chap 5, pp 159-171
- 326 MYRIANTHOPOULOS NC  
An approach to the investigation of maternal factors in congenital malformations. (DOCUMENT NUMBER 00391)  
In Genetic Epidemiology. NE Merton and CS Chung (Eds), New York, San Francisco, London, Academic Press, 1978, pp 363-379
- 327 MYRIANTHOPOULOS NC  
Congenital malformations: the contribution of twin studies. (DOCUMENT NUMBER 00400)  
In Cell Surface Factors, Immune Deficiencies, Twin Studies. RL Summitt and D Bergsma (Eds), New York, Alan R Liss for The National Foundation--March of Dimes. BD:OAS XIV(6A): 151-165, 1978
- 328 MYRIANTHOPOULOS NC  
Other skull defects: cranioleacunia, foramina parietalia parvagna, aplasia of the sphenoid wings. (DOCUMENT NUMBER 00411)  
In Handbook of Clinical Neurology: Congenital Malformations of the Brain and Skull, Vol 30. PJ Vinken and GH Bruyn (Eds), Amsterdam, New York, Oxford, North-Holland Publishing Co, 1977 Part 1, Chap 11, pp 269-284
- 329 MYRIANTHOPOULOS NC  
Our load of central nervous system malformations. (DOCUMENT NUMBER 00427)  
In Recent Advances in The Developmental Biology of Central Nervous System Malformations. NC Myrianthopoulos and D Bergsma (Eds), New York, Alan R Liss, Inc, 1979, pp 1-18



54 NINCDS COLLABORATIVE PERINATAL PROJECT BIBLIOGRAPHY

330 MYRIANTHOPOULOS NC  
Summary and Synthesis. (DOCUMENT NUMBER 00426)

In Recent Advances in the Developmental Biology of Central Nervous System Malformations. NC Myriantopoulos and D Bergsma (Eds), New York, Alan R Liss, Inc. 1979, pp 117-124

331 MYRIANTHOPOULOS NC  
The human population data: critique II. (DOCUMENT NUMBER 00505)

In Etiology of Cleft Lip and Cleft Palate. M Melnick, D Bixler and ED Sh'eld (Eds), New York, Alan R Liss Inc. 1980, pp 357-361

332 MYRIANTHOPOULOS NC, CHUNG CS  
Congenital malformations in singletons: epidemiologic survey. Birth Defects: Original Article Series: X. #1, 1974, pp 58 (DOCUMENT NUMBER 00278)

333 MYRIANTHOPOULOS NC, CHURCHILL JA, BASZYNSKI AJ  
Respiratory distress syndrome in twins. (Abstract) Am J Hum Genet 22: 19a, 1970 (DOCUMENT NUMBER 00143)

334 MYRIANTHOPOULOS NC, CHURCHILL JA, BASZYNSKI AJ  
Respiratory distress syndrome in twins. Acta Genet Med Gemellol 20: 199-2f4, 1971 (DOCUMENT NUMBER 00185)

335 MYRIANTHOPOULOS NC, de la BURDE' B  
A case of conjoined twins. (Abstract) Acta Genet Med Gemellol 23: 17, 1974 (DOCUMENT NUMBER 00279)

36 MYRIANTHOPOULOS NC, de la BURDE' B  
A case of conjoined twins. Proceedings of the First International Congress on Twin Studies held in Rome October 28-November 2, 1974. Acta Genet Med Gemellol 25: 59-61, 1976 (DOCUMENT NUMBER 00350)

- 337 MYRIANTHOPOULOS NC, FRENCH KS  
 (DOCUMENT NUMBER 00074)  
 An application of the U.S. Bureau of the Census socioeconomic Index to a large, diversified patient population.  
 Soc Sci Med 2: 283-299, 1968
- 338 MYRIANTHOPOULOS NC, MELNICK M  
 (DOCUMENT NUMBER 00351)  
 Malformations in monozygotic twins: a possible example of environmental influence on the developmental genetic clock.  
 In Gene-Environment Interaction in Common Diseases. E Inouye and H Nishimura (Eds), Tokyo, University of Tokyo Press and Baltimore, University Park Press, 1977, pp 205-220
- 339 MYRIANTHOPOULOS NC, MELNICK M  
 (DOCUMENT NUMBER 00412)  
 Tay-Sachs disease: a genetic-historical view of selective advantage.  
 In Tay-Sachs Disease: Screening and Prevention. M Kaback, DL Rimoin and JS O'Brien (Eds), New York, Alan R Liss, 1977, pp 95-106
- 340 MYRIANTHOPOULOS NC, NICHOLS PL, BROMAN SH  
 (DOCUMENT NUMBER 00280)  
 Intellectual development of twins. Comparison with singletons. (Abstract)  
 Acta Genet Med Gemellol 23: 60, 1974
- 341 MYRIANTHOPOULOS NC, NICHOLS PL, BROMAN SH  
 (DOCUMENT NUMBER 00352)  
 Intellectual development of twins--comparison with singletons. Proceedings of the First International Congress on Twin Studies held in Rome 28 October - 2 November, 1974  
 Acta Genet Med Gemellol (Roma) 25: 376-380, 1976
- 342 MYRIANTHOPOULOS NC, NICHOLS PL, BROMAN SH, ANDERSON VE  
 (DOCUMENT NUMBER 00222)  
 Intellectual development of a prospectively studied population of twins and comparison with singletons.  
 Hum Genet. Internat'l Congress Series 250: 244-257, 1972

343 NACHSHON I, DEMNO DJ, AUB AND S (DOCUMENT NUMBER 00569)

Lateral preferences of hand, eye and foot: relation to cerebral dominance.

Intern J Neurosci 18: 1-10, 1983

344 NAEYE RL (DOCUMENT NUMBER 00288)

Amniotic fluid infections and premature rupture of the membranes, epidemiologic differences. (Abstract)

Pediatr Res 9: 298, 1975

345 NAEYE RL (DOCUMENT NUMBER 00289)

Fatal accidents and respiratory tract infections of infancy, contrasting epidemiologies. (Abstract)

Pediatr Res 9: 298, 1975

346 NAEYE RL (DOCUMENT NUMBER 00290)

Fetal hypoxia, a prospective study. (Abstract)

Pediatr Res 9: 298, 1975

347 NAEYE RL (DOCUMENT NUMBER 00353)

Causes and consequences of placental growth retardation.

JAMA 239: 1145-1147, 1978

348 NAEYE RL (DOCUMENT NUMBER 00354)

Relationship of cigarette smoking to congenital anomalies and perinatal death: a prospective study.

Am J Pathol 90: 289-293, 1978

349 NAEYE RL (DOCUMENT NUMBER 00355)

Causes of perinatal mortality in the US collaborative perinatal project.

JAMA 238: 228-229, 1977

- 350  
NAEYE RL  
Placental abnormalities in victims of the sudden infant death  
syndrome.  
    (Document Number 00356)  
    Biol Neonate 32: 189-192, 1977
- 351  
NAEYE RL  
Placental infarction leading to fetal or neonatal death: a  
prospective study.  
    (Document Number 00357)  
    Obstet Gynecol 50: 583-588, 1977
- 352  
NAEYE RL  
Placenta previa: predisposing factors and effects on the fetus  
and surviving infants.  
    (Document Number 00392)  
    Obstet Gynecol 52: 521-525, 1978
- 353  
NAEYE RL  
Amniotic fluid infections, neonatal hyperbilirubinemia, and  
psychomotor impairment.  
    (Document Number 00393)  
    Pediatrics 62: 497-503, 1978
- 354  
NAEYE RL  
Effects of maternal cigarette smoking on the fetus and placenta.  
    (Document Number 00394)  
    Br J Obstet Gynaecol 85: 732-737, 1978
- 355  
NAEYE RL  
Causes of perinatal mortality excess in prolonged gestations.  
    (Document Number 00401)  
    Am J Epidemiol 108: 429-433, 1978
- 356  
NAEYE RL  
Neonatal apnea: underlying disorders.  
    (Document Number 00405)  
    Pediatrics 63: 8-12, 1979

58 NINCDS COLLABORATIVE PERINATAL PROJECT BIBLIOGRAPHY

357  
NAEYE RL  
Causes of the excessive rates of perinatal mortality and prematurity in pregnancies complicated by maternal urinary-tract infections.  
(DOCUMENT NUMBER 00413)

N Engl J Med 300: 819-823, 1979

358  
NAEYE RL  
Reliability factors of delivery due dates.  
(DOCUMENT NUMBER 00414)

J Reprod Med 22: 148-150, 1979

359  
NAEYE RL  
Underlying disorders responsible for the neonatal deaths associated with low apgar scores.  
(DOCUMENT NUMBER 00415)

Biol Neonate 35: 150-155, 1979

360  
NAEYE RL  
Causes of fetal and neonatal mortality by race in a selected U.S. population.  
(DOCUMENT NUMBER 00439)

Am J Public Health 69: 857-861, 1979

361  
NAEYE RL  
Coitus and associated amniotic-fluid infections.  
(DOCUMENT NUMBER 00440)

N Engl J Med 301: 1198-1200, 1979

362  
NAEYE RL  
The duration of maternal cigarette smoking, fetal and placental disorders.  
(DOCUMENT NUMBER 00441)

Early Hum Dev 3: 229-237, 1979

363  
NAEYE RL  
Height gain and the outcome of pregnancy.  
(DOCUMENT NUMBER 00442)

Am J Obstet Gynecol 135: 3-9, 1979

- 364  
 HAEYE RL  
 Cigarette smoking and pregnancy weight gain.  
 (Letters to the Editor)  
 Lancet 1: 765-766, 1980  
 (DOCUMENT NUMBER 00457)
- 365  
 HAEYE RL  
 Seasonal variations in coitus and other risk factors,  
 and the outcome of pregnancy.  
 Early Hum Dev 4: 61-68, 1980  
 (DOCUMENT NUMBER 00458)
- 366  
 HAEYE RL  
 Environmental influences of the embryo and fetus.  
 In Environmental Pathology: An Evolving Field. RB Hill and  
 JA Terzian (Eds). New York, Alan R Liss Inc, 1982,  
 pp 111-128  
 (DOCUMENT NUMBER 00485)
- 367  
 HAEYE RL  
 Maternal use of dextroamphetamine and growth of the fetus.  
 Pharmacology 26: 117-126, 1983  
 (DOCUMENT NUMBER 00493)
- 368  
 HAEYE RL  
 Maternal age, obstetric complications, and the  
 outcome of pregnancy.  
 Obstet Gynecol 61: 210-216, 1983  
 (DOCUMENT NUMBER 00506)
- 369  
 HAEYE RL  
 Factors that predispose to premature rupture of  
 the fetal membranes.  
 Obstet Gynecol 60: 93-98, 1982  
 (DOCUMENT NUMBER 00507)

370  
NAEYE RL  
Coitus and antepartum haemorrhage.  
(DOCUMENT NUMBER 00510)

Br J Obstet Gynaecol 38: 765-770, 1981

371  
NAEYE RL  
Influence of maternal cigarette smoking during  
pregnancy on fetal and childhood growth.  
(DOCUMENT NUMBER 00511)

Obstet Gynec 57: 18-21, 1981

372  
NAEYE RL  
Maternal blood pressure and fetal growth.  
(DOCUMENT NUMBER 00512)

Am J Obstet Gynaecol 141: 780-787, 1981

373  
NAEYE RL  
Maternal nutrition and pregnancy outcome.  
(DOCUMENT NUMBER 00513)

In Maternal Nutrition in Pregnancy, Eating For Two? J Dobbing  
(Ed). London, Academic Press, 1981, pp 89-111

374  
NAEYE RL  
Nutritional/nonnutritional interactions that affect the  
outcome of pregnancy.  
(DOCUMENT NUMBER 00514)

Am J Clin Nutr 34: 727-731, 1981

375  
NAEYE RL  
Teenaged and pre-teenaged pregnancies: consequences of the  
fetal-maternal competition for nutrients.  
(DOCUMENT NUMBER 00515)

Pediatrics 67: 146-150, 1981

376  
NAEYE RL  
Abruptio placentae and placenta previa: frequency,  
perinatal mortality, and cigarette smoking.  
(DOCUMENT NUMBER 00518)

Obstet Gynec 55: 701-704, 1980

377  
NAEYE RL  
Coitus and associated amniotic-fluid infections.  
(DOCUMENT NUMBER 00519)

N Engl J Med 301: 1198-1200, 1979

378  
NAEYE RL  
Reply to Van Den Berg: coitus and amniotic-fluid infections.  
(Correspondence)  
(DOCUMENT NUMBER 00520)

N Engl J Med 302: 632-633, 1980

379  
NAEYE RL  
Effects of maternal nutrition on the outcome of pregnancy.  
(DOCUMENT NUMBER 00522)

In Human Embryonic and Fetal Death. IH Porter and EB  
Hook (Eds), New York, Academic Press, 1980, pp 197-206

380  
NAEYE RL  
Factors in the mother/infant dyad that influence the  
development of infections before and after birth.  
(DOCUMENT NUMBER 00523)

In Perinatal Infections. Ciba Foundation Symposium 77  
(new series), Amsterdam, Excerpta Medica, 1980, pp 3-16

381  
NAEYE RL  
Sudden infant death.  
(DOCUMENT NUMBER 00524)

Sci Am 242: 56-62, 1980

382  
NAEYE RL  
Effects of maternal nutrition on the outcome of pregnancy.  
(DOCUMENT NUMBER 00525)

In Obstetrical Decisions and Neonatal Outcome. L Gluck  
(Ed), Report on the Seventy-Eighth Ross Conference on  
Pediatric Research, Columbus, OH, Ross Laboratories, 1979,  
pp 9-11

5274 - 100



62 NINCDS COLLABORATIVE PERINATAL PROJECT BIBLIOGRAPHY

- 383  
NAEYE RL  
The outcome of diabetic pregnancies: a prospective study.  
(DOCUMENT NUMBER 00526)  
In Pregnancy Metabolism, Diabetes and the Fetus. Ciba  
Foundation Symposium 63 (new series), Amsterdam, Excerpta  
Medica, 1979, pp 227-241
- 384  
NAEYE RL, CHEZ RA  
Effects of maternal acetonuria and low pregnancy weight  
gain on children's psychomotor development.  
(DOCUMENT NUMBER 00516)  
Am J Obstet Gynecol 139: 189-193, 1981
- 385  
NAEYE RL, DIXON JB  
Distortions in fetal growth standards.  
(DOCUMENT NUMBER 00395)  
Pediatr Res 12: 987-991, 1978
- 386  
NAEYE RL, DRAGE JS  
Sudden infant death syndrome, a prospective study. (Abstract)  
(DOCUMENT NUMBER 00291)  
Pediatr Res 9: 298, 1975
- 387  
NAEYE RL, FRIEDMAN EA  
Causes of perinatal death associated with gestational  
hypertension and proteinuria.  
(DOCUMENT NUMBER 00406)  
Am J Obstet Gynecol 133: 8-10, 1979
- 388  
NAEYE RL, HARKNESS HL, UTTS J  
Abruptio placentae and perinatal death: a prospective study.  
(DOCUMENT NUMBER 00358)  
Am J Obstet Gynecol 128: 740-746, 1977
- 389  
NAEYE RL, KISSANE JM, KAUFMAN N  
Perinatal Diseases.  
(DOCUMENT NUMBER 00517)  
Baltimore, Williams and Wilkins, 1981, pp 300

- 390  
NAEYE RL, LADIS B, DRAGE JS  
Sudden infant death syndrome: a prospective study.  
Am J Dis Child 130: 1207-1210, 1976  
(DOCUMENT NUMBER 00359)
- 391  
NAEYE RL, PETERS EC  
Amniotic fluid infections with intact membranes leading to  
perinatal death: a prospective study.  
Pediatrics 61: 171-177, 1978  
(DOCUMENT NUMBER 00360)
- 392  
NAEYE RL, PETERS EC  
Causes and consequences of premature rupture of fetal membranes.  
Lancet 1: 192-194, 1980  
(DOCUMENT NUMBER 00438)
- 393  
NAEYE RL, PETERS EC  
Working during pregnancy: effects on the fetus.  
Pediatrics 69: 724-727, 1982  
(DOCUMENT NUMBER 00508)
- 394  
NAEYE RL, ROSS SM  
Amniotic fluid infection syndrome.  
Clin Obstet Gynaecol 9: 593-607, 1982  
(DOCUMENT NUMBER 00509)
- 395  
NAEYE RL, TAFARI N  
Risk Factors in Pregnancy and Diseases of the Fetus  
and Newborn.  
Baltimore, Williams and Wilkins, 1983, pp 361  
(DOCUMENT NUMBER 00486)
- 396  
NAEYE RL, TAFARI N, JUDGE D, MARBOE CC  
Twins: causes of perinatal death in 12 United States cities and  
one African city.  
Am J Obstet Gynecol 131: 267-272, 1978  
(DOCUMENT NUMBER 00361)

64 NINCDS COLLABORATIVE PERINATAL PROJECT BIBLIOGRAPHY

- 397  
NAYLOR AF  
Ethnoracial comparisons of intraclass correlations and mean gestation times in spontaneous abortion and perinatal death.  
Am J Obstet Gynecol 97: 931-935, 1967  
(DOCUMENT NUMBER 00026)
- 398  
NAYLOR AF  
Sequential aspects of spontaneous abortion: maternal age, parity, and pregnancy compensation artifact.  
Soc Biol 21: 195-204, 1974  
(DOCUMENT NUMBER 00281)
- 399  
NAYLOR AF, MYRIANTHOPOULOS HC  
The relation of ethnic and selected socio-economic factors to human birth-weight.  
Ann Hum Genet 31: 71-83, 1967  
(DOCUMENT NUMBER 00027)
- 400  
NAYLOR AF, HARBURTON D  
Spontaneous abortion risk in relation to race, prior occurrence, and maternal age. (Abstract)  
Am J Hum Genet 22: 26a, 1970  
(DOCUMENT NUMBER 00144)
- 401  
NAYLOR AF, HARBURTON D  
Genetics of obstetrical variables. A study from the collaborative perinatal project.  
Clin Genet 6: 351-369, 1974  
(DOCUMENT NUMBER 00282)
- 402  
NAYLOR AF, HARBURTON D  
Sequential analysis of spontaneous abortion.  
II. Collaborative study data show that gravidity determines a very substantial rise in risk.  
Fertil Steril 31: 282-286, 1979  
(DOCUMENT NUMBER 00429)

403 (DOCUMENT NUMBER 00443)

NAYLOR AF, HILLERMAN I  
Physical development of interracial children in the first year.

Soc Biol 26: 7-15, 1979

404 (DOCUMENT NUMBER 00362)

NELSON KB  
Febrile seizures.

In Current Pediatric Therapy, Vol 8. SS Gellis and J Kagan (Eds), Philadelphia, Pa, WB Saunders Co, 1976, pp 85-87

405 (DOCUMENT NUMBER 00396)

NELSON KB  
Febrile seizures.

In the Practice of Pediatric Neurology, Vol II. KF Swaiman and FS Wright (Eds). St. Louis, C.V. Mosby Co, 1975, Chapter 35, Unit VIII, pp 870-874

406 (DOCUMENT NUMBER 00459)

NELSON KB  
Febrile seizures.

In Pediatric Update: Reviews for Physicians. AJ Moss (Ed), New York, Elsevier, 1980, pp 379-389

407 (DOCUMENT NUMBER 00530)

NELSON KB  
Febrile Seizures.

In Handbook of Clinical Neurology. PJ Vinken and GN Bryun (Eds), Vol 42: Neurological Directory. Amsterdam, North-Holland Publishing Co, 1981, Pt 1, pp 694-695

408 (DOCUMENT NUMBER 00534)

NELSON KB  
Febrile Seizures.

In Current Pediatric Therapy, Vol 9. SS Gellis and JM Kagan (Eds), Philadelphia, WB Saunders Co, 1980, pp 81-83

66 NINCDS COLLABORATIVE PERINATAL PROJECT BIBLIOGRAPHY

- 409 NELSON KB, BROMAH SM  
Perinatal risk factors in children with serious motor and mental handicaps.  
(DOCUMENT NUMBER 00363)  
Ann Neurol 2: 371-377, 1977
- 410 NELSON KB, DEUTSCHBERGER J  
Head size at one year as a predictor of four-year IQ.  
(DOCUMENT NUMBER 00145)  
Dev Med Child Neurol 12: 487-495, 1970
- 411 NELSON KB, ELLENBERG JH  
Spastic diplegia at one year: prognosis. (Abstract)  
(DOCUMENT NUMBER 00283)  
Dev Med Child Neurol 17: 390-391, 1975
- 412 NELSON KB, ELLENBERG JH  
Prognosis in children with febrile seizures.  
(DOCUMENT NUMBER 00364)  
Pediatrics 61: 720-727, 1978
- 413 NELSON KB, ELLENBERG JH  
Predictors of epilepsy in children who have experienced febrile seizures.  
(DOCUMENT NUMBER 00365)  
N Engl J Med 295: 1029-1033, 1976
- 414 NELSON KB, ELLENBERG JH  
Epidemiology of cerebral palsy.  
(DOCUMENT NUMBER 00416)  
In Advances in Neurology, Vol 19, BS Schoenberg (Ed),  
New York, Raven Press, 1978, pp 421-435
- 415 NELSON KB, ELLENBERG JH  
Neonatal signs as predictors of cerebral palsy.  
(DOCUMENT NUMBER 00431)  
Pediatrics 64: 225-232, 1979

- 416 NELSON KB, ELLENBERG JH (DOCUMENT NUMBER 00444)  
 Apgar scores and long-term neurological handicap. (Abstract)  
 Ann Neurol 6: 182, 1979
- 417 NELSON KB, ELLENBERG JH (DOCUMENT NUMBER 00559)  
 Perinatal factors and risk for nonfebrile seizure disorders  
 in children free of cerebral palsy.  
 In Advances in Epileptology: XVth Epilepsy International  
 Symposium. R.J. Porter et al (Eds). New York,  
 Raven Press, 1984, pp 385-389
- 418 NELSON KB, ELLENBERG JH (DOCUMENT NUMBER 00499)  
 Obstetric complications as risk factors for cerebral palsy or  
 seizure disorders.  
 Jams 251: 1843-1848, 1984
- 419 NELSON KB, ELLENBERG JH (DOCUMENT NUMBER 00527)  
 An epidemiologic approach to the problems of cerebral palsy.  
 In Child Neurology. Y Fukuyama, M Arima, K MacKawa and K  
 Yamaguchi (Eds), Amsterdam, Excerpta Medica, 1982,  
 pp 341-350
- 420 NELSON KB, ELLENBERG JH (DOCUMENT NUMBER 00528)  
 Children who 'outgrew' cerebral palsy.  
 Pediatrics 69: 529-536, 1983
- 421 NELSON KB, ELLENBERG JH (DOCUMENT NUMBER 00529)  
 Maternal seizure disorder: outcome of pregnancy, and  
 neurologic abnormalities in the children.  
 Neurology 32: 1247-1254, 1982

422 NELSON KB, ELLENBERG JH (DOCUMENT NUMBER 00531)  
Apgar scores as predictors of chronic neurologic disability.  
Pediatrics 68: 36-44, 1981

423 NELSON KB, ELLENBERG JH (DOCUMENT NUMBER 00532)  
Febrile Seizures.  
New York. Raven Press, 1981, pp 360

424 NELSON KB, ELLENBERG JH (DOCUMENT NUMBER 00536)  
Reply to Livingston: what are nonepileptic seizures?  
(Letters to the Editor)  
Pediatrics 65: 677, 1980

425 NELSON KB, ELLENBERG JH (DOCUMENT NUMBER 00538)  
Reply to Mallace: they don't do very well. (Letters to the  
Editor)  
Pediatrics 65: 679, 1980

426 NELSON KB, ELLENBERG JH (DOCUMENT NUMBER 00540)  
Reply to Huttenlocher: natural course of febrile seizures.  
(Letters to the Editor)  
Pediatrics 65: 620, 1980

427 NELSON KB, ELLENBERG JH (DOCUMENT NUMBER 00541)  
Seizures in early childhood. (Abstract)  
Dev Med Child Neurol 22: 261-262 1980

428 NELSON KB, ELLENBERG JH (DOCUMENT NUMBER 00556)  
Reply to Berg: maternal seizure disorders. (Letters to the  
Editor)  
Neurology 34: 266-267, 1984

- 429 NEWMAN SJ, MADDEN DL, GITNICK GL, SEVER JL  
 A serological survey for Australia antigen and antibody.  
 (DOCUMENT NUMBER 00186)  
 Am J Dis Child 122: 129-133, 1971
- 430 NICHOLS PL  
 Minimal brain dysfunction: genetic studies. (Abstract)  
 (DOCUMENT NUMBER 00460)  
 Behav Genet 7: 80-81, 1977
- 431 NICHOLS PL  
 Familial mental retardation.  
 (DOCUMENT NUMBER 00557)  
 Behav Genet 14: 161-170, 1984
- 432 NICHOLS PL, ANDERSON VE  
 Intellectual performance, race, and socioeconomic status.  
 (DOCUMENT NUMBER 00244)  
 Soc Biol 20: 367-374, 1973
- 433 NICHOLS PL, BROMAN SH  
 Familial resemblance in infant mental development.  
 (DOCUMENT NUMBER 00245)  
 Dev Psychol 10: 442-446, 1974
- 434 NICHOLS PL, BROMAN SH  
 Infant mental development. (Letters to the Editor)  
 (DOCUMENT NUMBER 00366)  
 Behav Genet 7: 347-348, 1977
- 435 NICHOLS PL, CHEN TC  
 Minimal Brain Dysfunction: A Prospective Study.  
 (DOCUMENT NUMBER 00542)  
 Hillsdale, NJ, Lawrence Erlbaum Associates, 1981, pp 336



70 NINCDS COLLABORATIVE PERINATAL PROJECT BIBLIOGRAPHY

- 436  
NISWANDER KR  
The effect of intrauterine hypoxia/asphyxia  
on the surviving child. (DOCUMENT NUMBER 00117)
- In Proceedings of Prenatal Life: A Symposium on the Physiology  
and Pathology of Reproduction. Wayne State University, Detroit,  
Michigan, November 1-2, 1967. HC Macke (Ed), Springfield, Ill,  
Charles C Thomas, 1970, pp 217-235
- 437  
NISWANDER KR  
Should pregnant patients gain more weight?  
Postgrad Med 48: 133-138, 1970 (DOCUMENT NUMBER 00160)
- 438  
NISWANDER KR  
Obstetric factors related to prematurity.  
Proceedings of a working conference held at NICHD, NIH,  
Bethesda, Md, November 8-9, 1976 (DOCUMENT NUMBER 00367)
- In The Epidemiology of Prematurity. DM Reed and FJ Stanley (Eds),  
Baltimore and Munich, Urban & Schwarzenberg, 1977, pp 249-267
- 439  
NISWANDER KR  
The obstetrician, fetal asphyxia, and cerebral palsy.  
Am J Obstet Gynecol 133: 358-361, 1979 (DOCUMENT NUMBER 00432)
- 440  
NISWANDER KR, BERENDES HW  
Effect of maternal cardiac disease on the infant.  
Clin Obstet Gynecol 11: 1026-1040, 1968 (DOCUMENT NUMBER 00081)
- 441  
NISWANDER KR, BERENDES HW, DEUTSCHBERGER J, LIPKO N, WESTPHAL MC  
Fetal morbidity following potentially anoxicogenic  
obstetric conditions.  
V. Organic heart disease.  
Am J Obstet Gynecol 98: 871-876, 1967 (DOCUMENT NUMBER 00044)

- 442  
 NISWANDER KR, BERENDES HW, DEUTSCHBERGER J, WEISS W, LIPKO H,  
 KANTOR AG (DOCUMENT NUMBER 00045)  
 Fetal morbidity following potentially anoxicenic  
 obstetric conditions.  
 VI. Rupture of the marginal sinus.  
 Am J Obstet Gynecol 100: 862-866, 1968
- 443  
 NISWANDER KR, DRAGE JS (DOCUMENT NUMBER 00368)  
 Environment and reproduction: the American study. Proceedings of  
 the VIII World Congress of Gynecology and Obstetrics held in  
 Mexico City, October 17-22, 1976.  
 In Excerpta Medica International Congress Series No 412,  
 Gynecology and Obstetrics. L Castolazo-Ayala and C MacGregor  
 (Eds), New York, Elsevier/North-Holland and Amsterdam, Excerpta  
 Medica, 1977, pp 43-54
- 444  
 NISWANDER KR, FRIEDMAN EA, BERENDES HW (DOCUMENT NUMBER 00046)  
 Do placenta previa, abruptio placentae and prolapsed cord  
 cause neurologic damage to the infant who survives?  
 In Clinics in Developmental Medicine No. 27, Studies  
 in Infancy. R Mackeith and M Bax (Eds), Suffolk,  
 England, Spastics International Medical Publications  
 in Association with William Heinemann Medical Books  
 Ltd., 1968, pp 78-83
- 445  
 NISWANDER KR, FRIEDMAN EA, HOOVER DB, PIETROWSKI H, WESTPHAL MC (DOCUMENT NUMBER 00047)  
 Fetal morbidity following potentially anoxicenic  
 obstetric conditions.  
 I. Abruptio placentae.  
 Am J Obstet Gynecol 95: 838-845, 1966
- 446  
 NISWANDER KR, FRIEDMAN EA, HOOVER DB, PIETROWSKI H, WESTPHAL MC (DOCUMENT NUMBER 00048)  
 Fetal morbidity following potentially anoxicenic  
 obstetric conditions.  
 II. Placenta previa.  
 Am J Obstet Gynecol 95: 846-852, 1966

72 NINCDS COLLABORATIVE PERINATAL PROJECT BIBLIOGRAPHY

- 447 NISWANDER KR, FRIEDMAN EA, HOOVER DB, PIETROWSKI M, WESTPHAL MC  
Fetal morbidity following potentially anoxic  
obstetric conditions.  
III. Prolapse of the umbilical cord.  
(DOCUMENT NUMBER 00049)  
Am J Obstet Gynecol 95: 853-859, 1966
- 448 NISWANDER KR, FRIEDMAN EA, HOOVER DB, PIETROWSKI M, WESTPHAL MC  
Fetal morbidity following potentially anoxic  
obstetric conditions.  
IV. Occult prolapse of the umbilical cord.  
(DOCUMENT NUMBER 00050)  
Am J Obstet Gynecol 95: 1099-1103, 1966
- 449 NISWANDER KR, GORDON M  
Safety of the low-forceps operation.  
(DOCUMENT NUMBER 00269)  
Am J Obstet Gynecol 117: 619-630, 1973
- 450 NISWANDER KR, GORDON M, BERENDES HW, BLANC MA, CLIFFORD SH,  
DOUGLAS RG, DRAGE JS, HARDY JB, JACKSON EC, LIPSITT LP, SHAPIRO S,  
WEISS H  
The Women and Their Pregnancies.  
The Collaborative Perinatal Study of the NINCDS. Philadelphia,  
W.B. Saunders, 1972, pp 540  
(DOCUMENT NUMBER 00223)
- 451 NISWANDER KR, GORDON M, DRAGE JS  
The effect of intrauterine hypoxia on the child surviving  
to 4 years.  
(DOCUMENT NUMBER 00296)  
Am J Obstet Gynecol 121: 892-899, 1975
- 452 NISWANDER KR, JACKSON EC  
Physical characteristics of the gravida and their association  
with birth weight and perinatal death.  
(DOCUMENT NUMBER 00246)  
Am J Obstet Gynecol 119: 306-313, 1974

- 453  
 NISWANDER KR, SINGER JE, NESTPHAL MC, WEISS M  
 Weight gain during pregnancy and prepregnancy weight.  
 Association with birth weight of term gestation. (DOCUMENT NUMBER 00062)  
 Obstet Gynecol 33: 482-491, 1969
- 454  
 NO BY-LINE  
 Children's febrile seizures won't affect IQ later. (DOCUMENT NUMBER 00461)  
 (Commentaries)  
 Med World News 19: 45-46, 1979
- 455  
 NO BY-LINE  
 Placental defects linked to smoking. (Commentaries) (DOCUMENT NUMBER 00462)  
 Med World News 19: 24, 26, 1978
- 456  
 ODELL LM  
 Maternal intellectual functioning. (DOCUMENT NUMBER 00205)  
 Johns Hopkins Med J 128: 362-368, 1971
- 457  
 OLIVER JG, LABENZ PJ  
 The NINCDS collaborative perinatal project. (Abstract) (DOCUMENT NUMBER 00463)  
 ASHA 21: 681, 1979
- 458  
 OVERALL JC  
 Neonatal bacterial meningitis. (DOCUMENT NUMBER 00106)  
 J Pediatr 76: 499-511, 1970
- 459  
 PATIL SR, LUBS MA, BROWN J, COHEN MM, GERALD P'S, HECHT F,  
 KIMBERLING HJ, MYRIANTHOPOULOS NC, SUMMITT R  
 Incidence of major chromosome abnormalities in children. (Brief  
 Report) (DOCUMENT NUMBER 00370)  
 Cytogenet Cell Genet 18: 302-306, 1977

460 PATIL SR, LUBS MA, KINDERLING HJ, BROWN J, COHEN MM, GERALD PS,  
HECHT F, MOORHEAD P, MYRIANTHOPOULOS NC, SUMMITT RL  
Chromosome abnormalities in 7 and 8 year old children. (Abstract)  
Am J Hum Genet 25: 58A, 1973 (DOCUMENT NUMBER 00247)

461 PATIL SR, LUBS MA, KINDERLING HJ, BROWN J, COHEN MM, GERALD PS,  
HECHT F, MOORHEAD P, MYRIANTHOPOULOS NC, SUMMITT RL  
Chromosomal abnormalities ascertained in a collaborative survey  
of 4,342 seven and eight year old children: frequency, phenotype  
and epidemiology. Proceedings of a symposium on human population  
cytogenetics held in Albany NY, October 14-15 1975. (DOCUMENT NUMBER 00369)

In Population Cytogenetics: Studies in Humans. EB Hook and IH  
Porter (Eds), New York, San Francisco, London, Academic Press  
1977, pp 103-131

462 PERCHASZADEH VB, HARDY JB, MELLITS ED, COHEN IH, MCKUSICK VA  
Growth and development in an "inner city" population: an  
assessment of possible biological and environmental influences.  
I. Intra-uterine growth. (DOCUMENT NUMBER 00230)

Johns Hopkins Med J 130: 384-397, 1972

463 PERCHASZADEH VB, HARDY JB, MELLITS ED, COHEN IH, MCKUSICK VA  
Growth and development in an "inner city" population: an  
assessment of possible biological and environmental influences.  
II. The effect of certain maternal characteristics on birth  
weight, gestational age and intra-uterine growth. (DOCUMENT NUMBER 00231)

Johns Hopkins Med J 131: 11-23, 1972

464 PLATO CC, CERECHINO JJ, STEINBERG FS  
The dermatoglyphics of American Caucasians. (DOCUMENT NUMBER 00371)

Am J Phys Anthropol 42: 195-210, 1975

- 465 RICE JP, NICHOLS PL, GOTTESMAN II  
 Assessment of sex differences for multifactorial traits using path analysis: application to learning difficulties.  
 Psychiatry Res 4: 301-312, 1981  
 (DOCUMENT NUMBER 00543)
- 466 RIEDER RO, BROMAN SH, ROSENTHAL D  
 The offspring of schizophrenics. II. Perinatal factors and IQ.  
 Arch Gen Psychiatry 34: 789-799, 1977  
 (DOCUMENT NUMBER 00372)
- 467 RIEDER RO, NICHOLS PL  
 Offspring of schizophrenics III. Hyperactivity and neurological soft signs.  
 Arch Gen Psychiatry 36: 665-674, 1979  
 (DOCUMENT NUMBER 00433)
- 468 RIEDER RO, ROSENTHAL D, WENDER P, BLUMENTHAL H  
 The offspring of schizophrenics: fetal and neonatal deaths.  
 Arch Gen Psychiatry 32: 200-211, 1975  
 (DOCUMENT NUMBER 00292)
- 469 ROBBINS PG, GORBACH AG Jr, REID DE  
 Neurologic abnormalities at one year in infants delivered after late-pregnancy hemorrhage.  
 Obstet Gynecol 29: 358-361, 1967  
 (DOCUMENT NUMBER 00038)
- 470 ROSENBAUM AL  
 Neuropsychologic outcome of children born via the occiput posterior position.  
 In Physical Trauma as an Etiological Agent in Mental Retardation. CR Angie, EA Berling (Eds), Proceedings of a conference on the Etiology of Mental Retardation. October 13-16, 1968, Omaha, Nebraska. pp 113-116  
 (DOCUMENT NUMBER 00146)

- 471  
ROSENBAUM AL, CHURCHILL JA, SHAKHASHIRI ZA, MIDODY RL  
Neuropsychologic outcome of children whose  
mothers had proteinuria during pregnancy.  
A report from the collaborative study of  
cerebral palsy.  
Obstet Gynecol 33: 118-123, 1969  
(DOCUMENT NUMBER 00075)
- 472  
ROSENBLITH JF  
Are newborn auditory responses prognostic of deafness?  
Trans Am Acad Ophthalmol Otolaryngol 74: 1215-1228, 1970  
(DOCUMENT NUMBER 00158)
- 473  
ROSENBLITH JF  
Visual fixation and following in the neonatal period in  
relation to selected behaviors and development; at 8 months  
and 4 years.  
In La Fonction Du Regard. The Function of Gaze. AD Poulsen,  
GC Lairy, and A Remond (Eds), Paris Colloque de L'Institut  
National de la Sante et de la Recherche Medicale, No. 7, 1971,  
pp 215-224  
(DOCUMENT NUMBER 00192)
- 474  
ROSENBLITH JF  
Prognostic value of neonatal behavioral tests.  
Early Child Dev Care 3: 31-50, 1973  
(DOCUMENT NUMBER 00256)
- 475  
ROSENBLITH JF  
Relations between neonatal behaviors and those at eight months.  
Dev Psychol 10: 779-792, 1974  
(DOCUMENT NUMBER 00294)
- 476  
ROSENBLITH JF  
Behavioral testing of the newborn.  
Compr Ther 2: 10-15, 1976  
(DOCUMENT NUMBER 00305)

477 ROSENBLITH JF, ANDERSON-HUNTINGTON RB (DOCUMENT NUMBER 00257)  
 Relations between newborn and 4 year behavior.

Abstract Guide of XXth International Congress of Psychology  
 Tokyo, 1972, p 511

478 ROSS SM, NAEYE RL (DOCUMENT NUMBER 00544)  
 Racial and environmental influences on fetal lung  
 maturation.

Pediatrics 68: 790-795, 1981

479 RUBIN RA, ROSENBLATT C, BALOW B (DOCUMENT NUMBER 00271)  
 Psychological and educational sequelae of prematurity.

Pediatrics 52: 352-363, 1973

480 SAXMAN JH, FAY WH (DOCUMENT NUMBER 00127)  
 Latency of echoic verbal responses by three-year-old children.

J Speech Hear Res 13: 232-238, 1970

481 SCHEIDT PC, MELLITS ED, HARDY JB, DRAGE JS, BOGOS TR (DOCUMENT NUMBER 00373)  
 Toxicity to bilirubin in neonates: infant development during  
 first year in relation to maximum neonatal serum bilirubin  
 concentration.

J Pediatr 91: 292-297, 1977

482 SECREST MP (DOCUMENT NUMBER 00028)  
 Nurses and the collaborative perinatal research project.

Nurs Res 15: 159-167, 1966

483 SEDLIS A, BERENDES HW, KIM HS, STONE DF, HEISS W, DEUTSCHBERGER J, JACKSON EC (DOCUMENT NUMBER 00056)  
 The placental weight-birthweight relationship.

Dev Med Child Neurol 9: 160-171, 1967



484 SERUNIAN SA, BROMAN SM  
 Relationship of Apgar scores and Bayley mental and motor scores.  
 (DOCUMENT NUMBER 00306)

Child Dev 46: 696-700, 1975

485 SEVER JL  
 Perinatal infections affecting the developing fetus and newborn.  
 (DOCUMENT NUMBER 00029)

Conference on the Prevention of Mental Retardation Through Control of Infectious Diseases. Supported by the National Institute of Child Health and Human Development. US Dept. of Health, Education, and Welfare. Public Health Service Publ. No. 1692. Wash., DC. US Gov't. Print. Off., 1968, pp 57-68

486 SEVER JL  
 Viral teratogens: a status report.  
 (DOCUMENT NUMBER 00107)

Hosp Pract 5: 75-83, 1970

487 SEVER JL  
 Viruses and embryos.  
 (DOCUMENT NUMBER 00108)

Proceedings of the Third International Conference on Congenital Malformations. The Hague, Sept. 7-13, 1969. Excerpta Medica International Congress Series No. 204, 1969, pp 180-186

488 SEVER JL  
 Infectious agents and fetal disease.  
 (DOCUMENT NUMBER 00147)

In Fetal Growth and Development. MA Haisman and O Kerr (Eds), New York, NY McGraw-Hill Inc, 1970, pp 221-235

489 SEVER JL  
 Viruses and embryos.  
 (DOCUMENT NUMBER 00148)

In Congenital Malformations. Proceedings of the Third International Conference. The Hague, The Netherlands, September 7-13, 1969. FC Fraser and VA McKusick (Eds), Amsterdam; Excerpta Medica Foundation, International Congress Series No 204, 1970, pp 180-186

- 490 SEVER JL (DOCUMENT NUMBER 00149)  
 Viruses and the fetus.  
 Int J Gynecol Obstet 8: 763-769, 1970
- 491 SEVER JL (DOCUMENT NUMBER 00187)  
 Persistent central nervous system infection by a virus: rubella.  
 In Immunological Disorders of the Nervous System. A.R.N.M.D.,  
 Vol. XLIX. Baltimore, Md., Williams & Wilkins, 1971, pp 365-372
- 492 SEVER JL, ELLENBERG JH, EDMONDS D (DOCUMENT NUMBER 00374)  
 Maternal urinary tract infections and prematurity.  
 Proceedings of a working conference held at NICHD, NIH,  
 Bethesda, Md, November 8-9, 1976
- In The Epidemiology of Prematurity. DM Reed and FJ Stanley (Eds),  
 Baltimore and Munich. Urban & Schwarzenberg, 1977, pp 193-196
- 493 SEVER JL, FUCCILLO DA, ELLENBERG JH, GILKESON MR (DOCUMENT NUMBER 00284)  
 Infection and low birth weight in an industrialized society.  
 Am J Dis Child 129: 557-558, 1975
- 494 SEVER JL, FUCCILLO DA, GILKESON MR, LEY AC, TRAUD RG (DOCUMENT NUMBER 00076)  
 Changing susceptibility to rubella.  
 Obstet Gynecol 32: 365-369, 1968
- 495 SEVER JL, GILKESON MR, CHEN TC, LEY AC, EDMONDS D (DOCUMENT NUMBER 00150)  
 Epidemiology of monqolism in the collaborative project.  
 Ann NY Acad Sci 171: 328-340, 1970
- 496 SEVER JL, HARDY JB, KORONES SB, GILKESON MR, CORRISON L, LEY AC, (DOCUMENT NUMBER 00109)  
 TZAH N, YARNICK D  
 Cord immunoglobulins in a middle class Caucasian population.  
 J Pediatr 75: 1224-1230, 1969

80 METHODS COLLABORATIVE PERINATAL PROJECT BIBLIOGRAPHY

497 SEVER JL, KARDY JB, NELSON KB, GILKESON MR (DOCUMENT NUMBER 00110)  
Kubella in the collaborative perinatal research study.  
Am J Dis Child 118: 123-132, 1969

498 SEVER JL, HUEDNER RJ, CASTELLANO GA, BELL JA (DOCUMENT NUMBER 00030)  
Serologic diagnosis "en masse" with multiple antigens.  
Am Rev Respir Dis 88: 342-359, 1963

499 SEVER JL, LARSEN JH Jr, GROSSMAN JH III (DOCUMENT NUMBER 00464)  
Handbook of Perinatal Infections.  
Boston, MA: Littleton, Brown and Co, 1979, pp 1-199

500 SEVER JL, NELSON KB, GILKESON MR (DOCUMENT NUMBER 00031)  
Rubella epidemic, 1964: effect on 6,000 pregnancies.  
Am J Dis Child 110: 395-407, 1965

501 SEVER JL, SCHIFF GM, HUEDNER RJ (DOCUMENT NUMBER 00032)  
Frequency of rubella antibody among pregnant women and other human and animal populations.  
Obstet Gynecol 23: 153-159, 1964

502 SEVER JL, TERASAKI PI (DOCUMENT NUMBER 00151)  
Maternal-fetal incompatibility. III.  
Central nervous system and cardiac anomalies.  
In Histocompatibility Testing. PI Terasaki (Ed), Copenhagen, Denmark, Munksgaard, 1970, pp 495-500

503 SEVER JL, WHITE LR (DOCUMENT NUMBER 00033)  
Intrauterine viral infections.  
Annu Rev Med 19: 471-486, 1968

- 504 SHAPIRO S, HARTZ SC, SISKIND V, MITCHELL AA, ROSENBERG L, MONSON RR, HEINONEN OP, IDANPAAN-HEIKKILA J, HARD S, SAXEN I  
Anticonvulsants and parental epilepsy in the development of birth defects.  
(DOCUMENT NUMBER 00303)  
Lancet 1: 272-275, 1976
- 505 SHAPIRO S, HEINONEN OP, SISKIND V, KAUFMAN DM, MONSON RR, SLONE D  
Antenatal exposure to doxylamine succinate and dicyclomine hydrochloride (Dandectin) in relation to congenital malformations, perinatal mortality rate, birth weight, and intelligence quotient score.  
(DOCUMENT NUMBER 00375)  
Am J Obstet Gynecol 128: 480-485, 1977
- 506 SHAPIRO S, KAUFMAN DM, ROSENBERG L, SLONE D, MONSON RR, SISKIND V, HEINONEN OP  
Meclozine in pregnancy in relation to congenital malformations.  
(DOCUMENT NUMBER 00376)  
Br Med J 1: 483, 1978
- 507 SHAPIRO S, MONSON RR, KAUFMAN DM, SISKIND V, HEINONEN OP, SLONE D  
Perinatal mortality and birth-weight in relation to aspirin taken during pregnancy.  
(DOCUMENT NUMBER 00377)  
Lancet 1: 1375-1376, 1976
- 508 SHAPIRO S, SLONE D, HARTZ SC, ROSENBERG L, SISKIND V, MONSON RR, MITCHELL AA, HEINONEN OP  
Are hydantoins (phenytoins) human teratogens? (Letters to the Editor)  
(DOCUMENT NUMBER 00378)  
J Pediatr 90: 673-674, 1977
- 509 SHONO PH, CHUNG CS, MYRIANTHOPOULOS NC  
Preconception radiation, Intrauterine diagnostic radiation, and childhood neoplasia.  
(DOCUMENT NUMBER 00545)  
J Natl Cancer Inst 55: 681-686, 1980

82 MHCDS COLLABORATIVE PERINATAL PROJECT BIBLIOGRAPHY

- 510  
SHINECK F, BENSON RC, CLARK WM Jr, BERENDES HW, WEISS W,  
DEUTSCHBERGER J (DOCUMENT NUMBER 00065)  
Fetal hazard after rupture of the membranes.  
A report from the collaborative project.  
Obstet Gynecol 28: 22-31, 1966
- 511  
SILVERMAN WA (DOCUMENT NUMBER 00546)  
Medicine's Millenarianism.  
Perspect Biol Med 24: 339-351, 1991
- 512  
SINGER JE, WESTPHAL MC, NISHANDER KE (DOCUMENT NUMBER 00051)  
Relationship of weight gain during pregnancy to birth weight  
and infant growth and development in the first year of life.  
A report from the collaborative study of cerebral palsy.  
Obstet Gynecol 31: 417-423, 1968
- 513  
SINGER JE, WESTPHAL MC, NISHANDER KR (DOCUMENT NUMBER 00052)  
Sex differences in the incidence of neonatal abnormalities and  
abnormal performance in early childhood.  
Child Dev 39: 105-112, 1968
- 514  
SLONE D, HEINONEN OP, KAUFMAN DM, SISKIND Y, MONSON RR, SHAPIRO S  
Aspirin and congenital abnormalities. (DOCUMENT NUMBER 00379)  
Lancet 1: 1373-1375, 1976
- 515  
SLONE D, HEINONEN OP, MONSON RR, SHAPIRO S, HERTZ SC, ROSENBERG I  
Maternal drug exposure and fetal abnormalities. (DOCUMENT NUMBER 00252)  
Clin Pharmacol Ther 14: 648-653, 1973

- 516 SLOWE D, SHAPIRO S, HEINONEN OP, MONSON KM, MARTZ SC, SISKIND V, ROSENBERG L, MITCHELL AA (DOCUMENT NUMBER 00380)  
 Perinatal drug exposure and birth defects.
- In Birth Defects: Risks and Consequences. S Kelly, EB Mook, DT Janerick and III Portier (Eds), New York, San Francisco, London, Academic Press, 1976, pp 265-274.
- 517 SLOWE D, SISKIND V, HEINONEN OP, MONSON RR, KAUFMAN DM, SHAPIRO S (DOCUMENT NUMBER 00381)  
 Antenatal exposure to the phenothiazines in relation to congenital malformations, perinatal mortality ratio, birth weight and intelligence quotient score.
- Am J Obstet Gynecol 128: 466-468, 1977
- 518 SMITH AC, FLICK GL, FERRISS OS, SELLMANN AH (DOCUMENT NUMBER 00394)  
 Prediction of developmental outcome at seven years from prenatal, perinatal, and postnatal events.
- Child Dev 43: 495-507, 1972
- 519 SMITH DM, KLEIN AM, HENDERSON JR, MYRIANTHOPOULOS NC (DOCUMENT NUMBER 00301)  
 Congenital hypothyroidism--signs and symptoms in the newborn period.
- J Pediatr 87: 958-962, 1975
- 520 SOKOL RJ (DOCUMENT NUMBER 00533)  
 Perinatal risk and cerebral palsy. (Letter to the Editor)
- Jama 251: 1868-1869, 1984
- 521 SOLOMONS G, GOLDEN RH, DENHOFF E (DOCUMENT NUMBER 00040)  
 The changing picture of cerebral dysfunction in early childhood.
- J Pediatr 65: 113-120, 1963

84 NINCDS COLLABORATIVE PERINATAL PROJECT BIBLIOGRAPHY

- 522 SPELLACY HN, GRAVEM HJ, FISCH RO  
The umbilical cord complications of true knots, nuchal coils,  
and cords around the body.  
Am J Obstet Gynecol 94: 1136-1142, 1966  
(DOCUMENT NUMBER 00066)
- 523 GEME JM JR, MURRAY DL, CARTER J, HOBEL CJ, LEAKE RD,  
ANTHONY BF, THIBEAULT DC, SOSS IB, DRAGE JS  
Perinatal bacterial infection after prolonged rupture of  
amniotic membranes: an analysis of risk and management.  
J Pediatr 104: 608-613, 1984  
(DOCUMENT NUMBER 00554)
- 524 STEINBERG FS, CEREGHINO JJ, PLATO CC  
The dermatoglyphics of American Negroes.  
Am J Phys Anthropol 42: 183-193, 1975  
(DOCUMENT NUMBER 00382)
- 525 THOMPSON DJ  
On getting the most out of multivariate data analyses.  
AJPH 69: 851, 1979  
(DOCUMENT NUMBER 00465)
- 526 TING RY, WANG MH, SCOTT TFMEN  
The dysmature infant: associated factors and outcome at 7 years  
of age.  
J Pediatr 90: 943-948, 1977  
(DOCUMENT NUMBER 00383)
- 527 TORRES F, BLAM ME  
Longitudinal EEG-clinical correlations in children  
from birth to 4 years of age.  
Pediatr 41: 945-954, 1968  
(DOCUMENT NUMBER 00061)

- 528  
 TORREY EF, HERSH SP, McCABE KD  
 Early childhood psychosis and bleeding during pregnancy.  
 J Autism Child Schizophr 5: 287-297, 1975  
 (DOCUMENT NUMBER 00302)
- 529  
 TOMBIN A  
 Spinal cord and brain stem injury at birth.  
 Arch Pathol 77: 620-632, 1964  
 (DOCUMENT NUMBER 00066)
- 530  
 TOMBIN A  
 Latent spinal cord and brain stem injury in newborn infants.  
 Dev Med Child Neurol 11: 54-68, 1969  
 (DOCUMENT NUMBER 00093)
- 531  
 TOMBIN A  
 Mental retardation due to germinal matrix infarction:  
 Brain damage in the fetal-neonatal period linked to  
 development of mental retardation.  
 Science 164: 156-161, 1969  
 (DOCUMENT NUMBER 00094)
- 532  
 TOMBIN A  
 Central nervous system damage in the  
 human fetus and newborn infant.  
 Am J Dis Child 119: 529-542, 1970  
 (DOCUMENT NUMBER 00130)
- 533  
 TOMBIN A  
 Cerebral hypoxic damage in fetus and newborn.  
 Arch Neurol 20: 35-43, 1969  
 (DOCUMENT NUMBER 00131)



- 534  
TOMBIN A  
Central nervous system damage in the premature related to the occurrence of mental retardation. (DOCUMENT NUMBER 00176)
- In Physical Trauma as an Etiological Agent in Mental Retardation. CR Angle, EA Bering (Eds), Proceedings of a conference on the Etiology of Mental Retardation. October 13-16, 1968, Omaha, Nebraska, pp 213-239
- 535  
TOMBIN A  
Cerebral intraventricular hemorrhage and subependymal matrix infarction in the fetus and premature newborn. (DOCUMENT NUMBER 00217)
- Am J Pathol 52: 121-139, 1968
- 536  
TOMBIN A  
Organic causes of minimal brain dysfunction. (DOCUMENT NUMBER 00218)
- JAMA 217: 1267-1214, 1971
- 537  
TUFTS E  
Accidental poisoning in children of the Oregon collaborative perinatal study. (DOCUMENT NUMBER 00274)
- Riv Clin Toxicologica Fascicolo 3-4: 265-267, 1971
- 538  
UPADHYAY Y  
A longitudinal study of full-term neonates with hyperbilirubinemia to four years of age. (DOCUMENT NUMBER 00171)
- Johns Hopkins Med J 128: 273-277, 1971
- 539  
VAN DEN BERG BJ  
Coitus and amniotic-fluid infections. (Correspondence) (DOCUMENT NUMBER 00521)
- N Engl J Med 302: 632, 1980

- 540  
VOHR DR. LIPSITT LP, OH M  
Somatic growth of children of diabetic mothers with  
Reference to birth size  
J Pediatrics 97: 196-199, 1980  
(DOCUMENT NUMBER 00547)
- 541  
VOLLMAH RF  
Rates of toxemia by age and parity.  
In Die Spätgestose. Internationales Symposium an der  
Universitätsfrauenklinik Basel, Basel, Switzerland, April 25-26,  
1969. Schwabe & Co, Verlag, Basel/Stuttgart, pp 338-342  
(DOCUMENT NUMBER 00111)
- 542  
VOLLMAN RF, MARMOL JG, ROSS ID, SCRIGGINS AI, TARVER JH  
Epidemiologic evaluation of clinical data on  
the teratogenic potential of drugs. (Abstract)  
Anat Rec 157: 337, 1967  
(DOCUMENT NUMBER 00034)
- 543  
VOSBURGH GJ, GATES MJ, MACKENZIE J, DEUTSCHBERGER J, BERENDES HW,  
WEISS M  
The effects of uterine dysfunction and  
mechanical dystocia on pediatric outcome.  
Bull Sloane Hosp Woman 12: 72-76, 1966  
(DOCUMENT NUMBER 00055)
- 544  
WARRIGHT RL  
Change in observed birth weight associated with change in  
maternal cigarette smoking.  
Amer J Epidem 117: 668-675, 1983  
(DOCUMENT NUMBER 00477)
- 545  
WALLACE SJ  
They don't do very well. (Letters to the Editor)  
Pediatrics 65: 678-679, 1980  
(DOCUMENT NUMBER 00537)

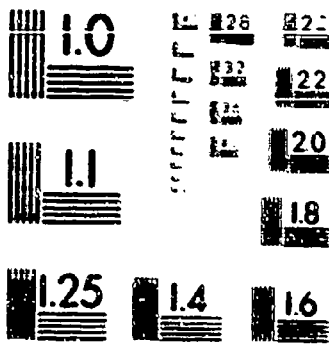
88 NINCDS COLLABORATIVE PERINATAL PROJECT BIBLIOGRAPHY

- 546  
HARBURTON D. HAYLOR AF  
The effect of parity on placental weight and birth weight: an immunological phenomenon? A report of the collaborative study of cerebral palsy.  
Am J Hum Genet 23: 41-54, 1971  
(DOCUMENT NUMBER 00163)
- 547  
WEINBERGER MM, OLEINICK A  
Congenital marrow dysfunction in Down's syndrome.  
J Pediatr 77: 273-279, 1970  
(DOCUMENT NUMBER 00152)
- 548  
HEISS H  
The analysis of data in the collaborative project of the National Institute of Neurological Diseases and Blindness.  
In Research Methodology and Needs in Perinatal Studies. SS Chisman, AM Lillienfeld, BG Greenberg, and JF Donnelly (Eds), Springfield, Ill, Charles C Thomas, 1966, pp 139-175  
(DOCUMENT NUMBER 00033)
- 549  
HEISS H, JACKSON EC  
Maternal factors affecting birth weight.  
In Perinatal Factors Affecting Human Development, Proceedings of Special Session, Eighth Meeting of PAHO Advisory Committee on Medical Research, June 10, 1969. Pan American Health Organization Washington, DC, Scientific Publ. No. 185, 1969, pp 54-59  
(DOCUMENT NUMBER 00112)
- 550  
HEISS H, JACKSON EC, HISHANDER KR, EASTMAN NJ  
The influence on birthweight of change in maternal weight gain in successive pregnancies in the same woman.  
Int J Gynaecol Obstet 7: 210-233, 1969  
(DOCUMENT NUMBER 00113)
- 551  
WELCHER DM, MELLITS ED, HARDY JB  
A multivariate analysis of factors affecting psychological performance.  
Johns Hopkins Med J 129: 19-35, 1971  
(DOCUMENT NUMBER 00206)

- 552 HELCHER DM, MESSEL KH, MELLITS ED, HARDY JB  
 The Bender-Gestalt test as an indicator of neurological impairment in young inner-city children.  
 Percept Mot Skills 35: 699-910, 1974.  
 (DOCUMENT NUMBER 00264)
- 553 WESTPHAL MC, JOSHI OB  
 The interrelationship of birth weight, length of gestation, and neonatal mortality.  
 Clin Obstet Gynecol 7: 670-686, 1964  
 (DOCUMENT NUMBER 00053)
- 554 WEYZEL KH, HELCHER DM, MELLITS ED  
 The possibility of overdiagnosing brain dysfunction from a single administration of the Bender Gestalt test.  
 Johns Hopkins Med J 129: 6-9, 1971  
 (DOCUMENT NUMBER 00207)
- 555 WHITE LR, SEVER JL, ALEPA FP  
 Maternal and congenital rubella before 1964: frequency, clinical features, and search for immune phenomena.  
 J Pediatr 74: 198-207, 1969  
 (DOCUMENT NUMBER 00077)
- 556 WHITEHOUSE D  
 Psychological and neurological correlates of seizure disorders.  
 Johns Hopkins Med J 129: 36-42, 1971  
 (DOCUMENT NUMBER 00208)
- 557 WILLERMAN L  
 Biosocial influences on human development.  
 Am J Orthopsychiat 42: 452-462, 1972  
 (DOCUMENT NUMBER 00114)

- 558  
HILLERMAN L  
Fetal head position during delivery, and intelligence. (DOCUMENT NUMBER 00153)
- In Physical Trauma as an Etiological Agent in Mental Retardation. CR Angie and EA Bering (Eds), Proceedings of a conference on the Etiology of Mental Retardation. October 13-16, 1968, Omaha, Nebraska, pp 105-108
- 559  
HILLERMAN L  
Maternal pelvic size and neuropsychological outcome. (DOCUMENT NUMBER 00154)
- In Physical Trauma as an Etiological Agent in Mental Retardation. CR Angie and EA Bering (Eds), Proceedings of a conference on the Etiology of Mental Retardation. October 13-16, 1968, Omaha, Nebraska, pp 109-112
- 560  
HILLERMAN L  
Biosocial influences on human development. (DOCUMENT NUMBER 00186)
- Am J Orthopsychiatry 42: 452-462, 1972
- 561  
HILLERMAN L, BROGAN SH, FIEDLER MF  
Infant development, preschool IQ, and social class. (DOCUMENT NUMBER 00115)
- Child Dev 41: 69-77, 1970
- 562  
HILLERMAN L, FIEDLER MF  
Infant performance and intellectual precocity. (DOCUMENT NUMBER 00258)
- Child Dev 45: 485-486, 1974
- 563  
HILLERMAN L, NAYLOR AF, MYRIANTHOPOULOS NC  
Intellectual development of children from interracial matings. (DOCUMENT NUMBER 00155)
- Science 170: 1329-1331, 1970

- 564  
 WILKERMAN L, NAYLOR AF, MYRIANTHOPOULOS NC  
 Intellectual development of children from interracial matings:  
 performance in infancy and at 4 years.  
 Behav Genet 4: 83-90, 1974  
 (DOCUMENT NUMBER 00248)
- 565  
 HOLFF SM  
 The ocular manifestations of congenital rubella: a prospective  
 study of 328 cases of congenital rubella.  
 J Pediatr Ophthalmol 10: 101-141, 1973  
 (DOCUMENT NUMBER 00265)
- 566  
 WOLFF CM, MYRIANTHOPOULOS NC  
 Polydactyly in American Negroes and whites.  
 Am J Hum Genet 25: 397-404, 1973  
 (DOCUMENT NUMBER 00249)
- 567  
 YANG DC, TING KY, KENNEDY C  
 The predictive value of the neurologic examination  
 in infancy for mental status at four years of age.  
 In Clinics in Developmental Medicine No. 27, Studies  
 in Infancy. R MacKeith and M Bay (Eds), Suffolk,  
 England. Spastics International Medical Publications  
 in Association with William Heinemann Medical Books,  
 Ltd., 1968, pp 94-99  
 (DOCUMENT NUMBER C0057)
- 568  
 YANKAUER A  
 Infant mortality and morbidity in the International year  
 of the child. (Letters to the Editor)  
 Am J Public Health 69: 852-853, 1979  
 (DOCUMENT NUMBER 00445)
- 569  
 YAZBAC FE, HOLDEN RH  
 Birth order of twins, apgar score, and perinatal mortality.  
 Second twin has higher mortality and lower apgar score.  
 (Numerical rating of condition) than first twin.  
 RI Med J 49: 595-597, 1966



MICROCOPY RESOLUTION TEST CHART  
 NATIONAL BUREAU OF STANDARDS-1963-A  
 STANDARD REFERENCE MATERIAL NO. 1010  
 AND 1010 TEST CHART, 1963

CONTINUED ON NEXT FICHE





AUTHOR INDEX

93

ALEPA FP	555	BILEK MK	111, 112
ALSTON FK	198	113, 114	
ALVESALO L	168	BISHOP EH	25
AMBRUS CM	1	BLANC WA	450
AMBRUS JL	1	BLAW ME	527
ANDERSON RB	2	BLUMENTHAL H	468
ANDERSON VE	342, 432	BOGGS TR	26, 461
ANDERSON-HUNTINGTON RB	3	DONAITI-PELLIE C	58
477		BORDLEY JE	27
ANTHONY BF	523	BRACKBILL Y	28, 29
ASHWORTH MR	55, 131	BRESKY PA	134
AURAND S	77, 343	BRISCOE CC	25
BABSON SG	4, 5	BRODY JE	30
BAILEY SM	158, 159	BROMAN SH	31, 32
176		33, 34, 35, 36, 37	
BALOW B	479	38, 39, 40, 340, 341	
BANAS JS	310	342, 409, 433, 454, 466	
BASZYNSKI AJ	333, 354	484, 561	
BELL JA	498	BROSS IDJ	1
BENIRSCHKE K	6	BROWN J	271, 459, 460, 461
BENSON RC	9, 10, 142, 510	BURCH PTJ	41
BERENDES VM	7, 9	BUTLER DV	42, 96
10, 11, 12, 13, 14		106, 107, 194, 229, 230	
15, 16, 17, 18, 19		231, 232, 255, 236	
20, 21, 22, 23, 53		CASLAN B	43
54, 55, 80, 81, 82		CARLETON JH	55, 143
196, 261, 309, 311, 440		CARTER J	523
441, 442, 444, 450, 483		CASTELLANO GA	498
510, 543			
BERG C	24		

## AUTHOR INDEX

CATALANO LP JR 96, 141	44, 45	COPLAN J	63
CEREGHINO JJ	464, 526	CORRIDON L	496
CHANG PN	111, 112	COMETT RM	64
CHASE A	47, 48	CUNNINGHAM DG	65
CHEN TC	141, 291	CUSHNER IM	66
292, 293	435, 495	DAHROUGE D	135
CHEZ RA	384	DALESSIO DJ	67
CHI JO	49	DALLAS J	68
CHOATE MCLS	69, 70	DAVIS OD	108
CHRISTIAN JC	301, 302	DEBARD AS	111
CHUNG CS	50, 51	de la BURDE <sup>1</sup> B	69, 70 71, 72, 73, 335, 336
332, 509		DENHOFF E	74, 75
CHURCHILL JA	52, 53	521	
34, 55, 56, 247, 248		DENNO DJ	76, 77
333, 334, 471		343	
CLARK WM JR	4, 9	DEPUE RH	78
229, 309, 510		DEUTSCHBERGER J	9, 10
CLARKSON QD	96, 232	23, 197, 255, 410, 441	
234, 236		442, 483, 510, 543	
CLARREN SK	57	DeVAULT S	245
CLERGET-DARPOUX F	58	DIETZMAN DE	282
CLIFFORD SM	59, 60	DIXON JB	385
450		DOOLING EC	49, 193
COCHRAN HD	314	DORSEN FMCF	108
COHEN BH	61, 462	DOUGLAS RG	450
463		DRAKE JS	81, 82, 83, 209, 386 390, 443, 450, 451, 481 523
COHEN MM	279, 280		
281, 459, 460, 461			
COLE PE	159, 177		
COLLIGAN RC	62		

DRISCOLL SG 142, 151  
 268  
 DRORBAUGH JE 60, 84  
 109, 252  
 EASTMAN NJ 550  
 EDMONDS D 492, 495  
 EHRHARDT AA 85, 86  
 306, 307  
 ELIN RJ 101  
 ELIZAH TS 87  
 ELLENBERG JH 38, 89  
 90, 91, 92, 240, 241  
 411, 412, 413, 414, 415  
 416, 417, 418, 419, 420  
 421, 422, 423, 424, 425  
 426, 427, 428, 492, 493  
 ELLIOTT J 93  
 ELLISON RC 223  
 ENGEL R 95, 96, 97, 98, 99  
 100, 233, 237  
 ENGEL RR 101, 113  
 115  
 FABIYI A 87  
 FALKNER F 102, 166  
 175  
 FAY HK 98, 99, 103, 104, 105  
 106, 107, 234, 480  
 FEINLEIB M 223  
 FELDMAN JF 86  
 FERRISS OS 108, 518  
 FIEDLER MF 109, 110  
 561, 562  
 FISCH RO 113, 114, 115, 270, 522  
 FISCHER L 1  
 FISHER PD 81, 139  
 FLEISHMAN J 1  
 FLICK OL 116, 518  
 FORT AT 117  
 FRAZIER TH 26  
 FREEMAN JM 118, 243  
 297  
 FRENCH KS 537  
 FRIEDMAN EA 119, 120  
 121, 122, 123, 124, 125  
 126, 127, 128, 129, 130  
 131, 132, 133, 134, 135  
 276, 387, 444, 445, 446  
 447, 448  
 FROENLICH LA 87, 136  
 137, 138, 139, 140, 144  
 145, 146, 147, 148, 149  
 150, 151, 310  
 FUCCILLO DA 44, 141  
 251, 493, 494  
 FUJIKURA T 8, 136  
 137, 138, 139, 142, 143  
 144, 145, 146, 147, 148  
 149, 150, 151, 152, 153  
 GARN SH 154, 155  
 156, 157, 158, 159, 160  
 161, 162, 163, 164, 165  
 166, 167, 168, 169, 170  
 171, 172, 173, 174, 175  
 176, 177, 178, 179, 180  
 181, 182, 183, 184, 185  
 186, 187, 188, 189, 269

## AUTHOR INDEX

GARRISON RJ	223	HANSON JH	200, 201
GATES MJ	190, 191	HARDY JB	203, 204, 205, 206, 207, 208, 209, 210, 211, 212, 213, 214, 215, 216, 217, 218, 219, 291, 292, 293, 296, 311, 450, 462, 463, 481, 486, 497, 551, 552
GERALD PS	279, 280	HARDY MP	210, 220
GILKESON MR	211, 212	HARDY WD	210
218, 242, 310, 493, 494		HARKNESS HL	388
495, 496, 497, 500		HARLIN RS	117
GILLES FH	49, 192	HARD S	504
193, 273		HARTZ SC	226, 315, 504, 508, 515
GITHICK OL	429	516	221, 222
GOFFEY B	194, 230	HARVEY MAS	57, 200
231, 232, 235, 236		HAVLIK RJ	223
GOLDSMITH MH	193	HECHT F	281, 459, 460, 461
GORBACH AG JR	469	HEINONEN OP	224, 225, 226, 227, 228, 250, 315, 504, 505, 506, 507, 508, 514, 515, 516
GORDON M	196, 197	HENDERSON JR	519
290, 449, 450, 451		HENDERSON NH	194, 229, 230, 231, 232, 233, 234, 235, 236
GOTTESMAN II	195, 465	HERBST AL	237
GRAUBARD BI	261	HERSH SP	528
GRAVEM HJ	115, 254	HIRTZ DO	88, 238
522		239, 240, 241	
GREEN M	157, 198		
GRISANTI OC	85, 307		
GROSSMAN JH III	499		
GROUSE LD	199		
GUIRE KE	178		
HACKETT ER	108		
HAINSHORTH ML	75		
HAINSHORTH PK	75		

HOBEL CJ	523	JENSEN DR	257
HOEKELMAN RA	242	JOHNSON LD	45, 141
HOFF K	160, 161	JOHNSTON M	163, 164
	162	173	
HOFFMAN LS	292	JONES KL	254
HOLDEN KR	243, 297	JONES MS	285, 286
HOLDEN RH	244, 245	JOSHI OB	553
	246, 285, 286, 521, 569	JUDGE D	396
HOLLEY WL	247, 248	KAGAN J	219
HOBLER IM	249	KANGAS J	5
HOOK EB	227, 250	KANTOR AG	196, 442
HOOPER DB	445, 446	KATZ SN	223
	447, 448	KAUFMAN DW	505, 506
HOROWITZ SL	168	507, 514, 517	
HORROBIN JM	112	KAUFMAN N	589
HORYA-BARBOSA L	251	KEATING MT	165, 166
HOUSLER M	140	269	
HUBBELL JP	252	KEMPER TL	259
HUEDNER RJ	498, 501	KENNEDY C	82, 83
HUISCHER HA	249	567	
HUSTENLOCHER PR	253	KENRHY WA	39, 40
IDANPAAN-HEIKKILA J	504	KESSEL SS	261
INCE SE	86	KIM MS	483
IRETON H	254	KIMBERLING NJ	279, 280
ISRAEL SL	25, 255	281, 459, 460, 461	
JACKSON FC	23, 209	KISSANE JM	589
	459, 452, 483, 549, 550	KLATSKIN EH	260
JAYALAKSHMI P	256	KLEBANOFF MA	261, 262

## AUTHOR INDEX

KLEIN AM	519	LEY AC	495, 496	87, 494
KLIONSKY B	152, 153	LILLIER AA		274
KOLATA GB	263	LINDEMANN SJ		234
KORONES SB	264, 265	LIPKO H		441, 442
311, 496		LIPSITT LP		450, 540
KRAMER A	174	LITTLE WA		275, 276
KRANITZ MA	266	LIVINGSTON S		277
KROLL BH	122, 123	LOBL M		278
124, 125, 126		LUDS HA	281, 459, 460, 461	279, 280
KURENT JE	267	MACKENZIE J		543
LABENZ ES	270, 270	MADDEN DL		282, 429
LABENZ PJ	270, 457	MAH EB	285, 286, 287	283, 284
LADYS B	590	MARDE CC		396
LAGA EH	268	MARMOL JG	290, 542	288, 289
LAMB ME	269	MASLAND RL		56
LARSEN JW Jr	499	MATA A		282
LASSMAN FH	270	MATTHEW ED		282
LAUFUS WC	71	MCCABE KD	162, 169, 177, 180, 181, 182, 185, 186, 187, 188, 528	160, 161, 178, 179, 183, 184, 185, 186, 187, 188, 189
LOVELLE M	167	MCCRACKEN OH Jr	291, 292, 293	211, 212
LAURENCE RA	304	McFALLS Jr JA		294
LEAKE RD	523	McGARRY ME		260
LECOURS AR	259			
LENNBERG EH	109			
LEVI NS	271			
LEVINE RL	272			
LEVITON A	195, 273			

McKUSICK VA	462, 463	MUIRHEAD DM Jr	252
MEIJS B	77	MUNRO HN	268
MELLITS EC	61, 66	MURRAY DL	523
212, 213, 214,		HYRIANTHOPULOS NC	50, 51
220, 243, 278,	61, 215, 219	57, 200, 223,	258, 279
296, 297, 462,	220, 243, 278, 286, 285	280, 281, 299,	306, 301
551, 552, 554	296, 297, 462, 463, 481	302, 317, 318,	310, 320
MELNICK H	298, 299	321, 322, 323,	324, 322
500, 301, 302,	336, 339	326, 327, 328,	329, 330
MENDELSON MA	245	331, 332, 333,	334, 335
MERRITT TA	303, 304	336, 337, 338,	339, 340
MEYER MD	305	341, 342, 349,	459, 460
MEYER-DAHLBURG NFL	85, 86	461, 509, 519,	563, 564
306, 307		566	
MILLER HC	308	NACHSHON I	77, 343
MILLER LD	113	NAEYE RL	304, 344
MITCHELL AA	504, 508	345, 346,	347, 348, 349
516		350, 351,	352, 353, 354
MITCHELL SC	309, 310	355, 356,	357, 358, 359
311, 312		360, 361,	362, 363, 364
MODER FL	141	365, 366,	367, 368, 369
MONIF GRO	313, 314	370, 371,	372, 373, 374
MONSON RR	226, 227	375, 376,	377, 378, 379
315, 504, 505,		380, 381,	382, 383, 384
508, 510, 515,	507	385, 386,	387, 388, 389
516, 517	517	390, 391,	392, 393, 394
MONTGOMERY LA	43	395, 396,	478
MOODY RL	471	NAFTALY N	132
MOORE DM	84	NAYLOR AF	56, 397
MOORE M	316	398, 399, 400,	401, 402
MOORHEAD P	279, 280	403, 546, 563,	564
460, 461		NEFF RK	127, 128
		129, 135	
		NELSON KD	88, 89
		90, 91,	92, 238, 239
		240, 241,	404, 405, 406
		407, 408,	409, 410, 411
		412, 413,	414, 415, 416
		417, 418,	419, 420, 421
		422, 423,	424, 425, 426
		427, 428,	497, 500

52.1 - 100



## AUTHOR INDEX

NEMORE J	54, 133	PETERS EC	391, 392
NEWMAN SJ	429	393	
NICHOLS PL	29, 59	PETZOLD AS	163, 164
40, 360, 341, 342, 430	29, 59	172, 173, 175	
431, 432, 433, 434, 435	431, 432, 433, 434, 435	PIETRONSKI M	445, 446
465, 467	465, 467	447, 448	
NISHANDE KR	1, 130	PLATO CC	464, 524
131, 132, 133, 136, 436	1, 130	PRUCE I	277
437, 438, 439, 440, 441	437, 438, 439, 440, 441	PURCELL RN	282
442, 443, 444, 445, 446	442, 443, 444, 445, 446	REAMES B	72
447, 448, 449, 450, 451	447, 448, 449, 450, 451	REID DE	469
452, 453, 512, 513, 550	452, 453, 512, 513, 550	REID HA	290
NO BY-LINE	454, 455	RHOADS GO	262
NUGENT RP	262	RICE JP	465
ODELL LM	456	RICH H	197, 198
OH M	540	RIDELLA SA	163, 164
OLEINICK A	547	167, 173, 174, 175	
OLIVER JO	457	RIEDER RO	466, 467
OSBORNE RH	168, 169	468	
OVERALL JC	458	ROANE JA	264, 265
OWEN GM	177	ROBBINS PO	469
PARK J	312	ROBINOW M	176
PATIL SR	279, 280	ROLFE UT	109
281, 459, 460, 461	279, 280	ROSENBAUM AL	248, 470
PATTERSON SP	290	471	
PAULI LL	277	ROSENBERG L	222, 226
PEEPLER MO	216	315, 504, 506, 508, 515	
PENCHASZADEH VB	462, 463	516	
PESICK SD	167, 170	ROSENBLATT C	479
171			

ROSENBLITH JF 2, 3  
 472, 473, 474, 475, 476  
 477  
 ROSENTHAL D 466, 468  
 ROSS ID 523, 542  
 ROSS SM 394, 478  
 ROSTAFINSKI M 282  
 RUBIN RA 479  
 SACHTLEBEN MR 130, 131  
 132, 133, 134  
 SACHTLEBEN-MURRAY MR 135  
 SAITO CH 252  
 SAXEN L 504  
 SAXMAN JH 480  
 SCHAFFER DB 256  
 SCHEIDT PC 481  
 SCHIFF GM 501  
 SCHMIDT EP 110  
 SCHWARZ BK 82, 83  
 SCOTT TFMCH 256, 526  
 SCRIGGINS AL 289, 542  
 SECREST HP 482  
 SEDLIG A 483  
 SELLMANN AH 312, 518  
 SERUNIAN SA 287, 484  
 SEVER JL 87, 141, 211, 212, 217  
 218, 251, 264, 265, 267  
 282, 292, 293, 313, 314  
 429, 485, 486, 487, 488  
 489, 490, 491, 492, 493  
 494, 495, 496, 497, 498  
 499, 500, 501, 502, 503  
 555  
 SHAKHASHIRI ZA 471  
 SHAPIRO IM 73  
 SHAPIRO S 221, 222  
 226, 227, 228, 250, 315  
 450, 504, 505, 506, 507  
 508, 514, 515, 516, 517  
 SHAW HA 177, 178  
 179, 180, 181, 182, 183  
 184, 185, 186, 187, 188  
 189  
 SHIZONO PH 509  
 SHUBECK F 9, 10  
 510  
 SILVERMAN HA 511  
 SINGER JE 453, 512  
 513  
 SISKIND V 221, 504  
 505, 506, 507, 508, 514  
 516, 517  
 SLONE D 221, 222  
 226, 227, 228, 250, 315  
 504, 505, 506, 507, 508  
 514, 515, 516, 517  
 SMITH AC 518  
 SMITH DN 57, 200  
 201, 202, 258, 519  
 SOKOL RJ 520  
 SOLOMONS G 521

## AUTHOR INDEX

SPELLACY MH	522	UPADHYAY Y	538
ST. GEME JH Jr	525	UTTS J	388
STEINBERG FS	464, 524	VAN DEN BERG BJ	539
STERN I	64	VETTER DK	270
STEWART MS	260	VOMR BR	540
STONE DF	443	VOLLMAN RF	289, 290
STRETSBOUTH AP	258	501, 542	
SUNNITT RL	279, 280	VOSBURGH GJ	543
281, 459, 460, 461		WAINRIGHT RL	189, 544
TAFARI N	395, 396	WALLACE SJ	545
TARVER JH	542	WANG MH	526
TERASAKI PI	502	WARBURTON D	400, 401
THIBEAULT DC	423	402, 546	
THOMPSON DJ	525	WARD RN	57
TINNING E	254	WARRAM JH Jr	84
TING RY	526, 567	WEINBERGER KM	547
TODARO J	264, 265	WEINTRAUB DH	1
TORRES F	527	WEISS H	10, 21, 22, 7, 9
TORREY EF	528	942, 450, 453, 23, 82	
543, 532, 533, 534, 535		543, 548, 549, 510	
536			
TRAUB RO	44, 494	WELCHER DH	219, 266
TUCKER SH	256	271, 278, 316, 551, 552	
TUFTS E	537	554	
TZAN N	291, 496	WENDER P	468
ULSTROM R	110	WESSEL KH	552
		WESTPHAL MC	512, 441
		445, 446, 447, 512, 448, 451	
		512, 413, 553	
		NETZEL KM	554

WHITE LR 503, 555  
 WHITEHOUSE D 556  
 MILLERMAN I 266, 403  
     557, 558, 559, 560, 561  
     562, 563, 564  
 WILLIAMS SN 220  
 WOLFF SM 565  
 WOODF CM 566  
 YAKOVLEV PI 259  
 YANG DC 567  
 YANKAUER A 568  
 YARNICK D 496  
 YAZBARK FE 569

0 SORTMK03 REALLOCATED IN CYLINDERS  
0 SORTMK02 REALLOCATED IN CYLINDERS  
0 SORTMK01 REALLOCATED IN CYLINDERS  
0 BLOCKSET TECHNIQUE SELECTED  
0 --- CONTROL STATEMENTS/MESSAGS

5740-SM1 REL 6.0 ----- 17.11.01 MAY 23. 1985 -----

SORT FIELDS=C0037,004,20,A1  
RECORD TYPE=1,LENGTH=C005633  
0 MAY13001,GO, INPUT LRECL B 543, TYPE D F  
0 MAIN STORAGE D (MAX,4096000,1492552), MMAX D 2000  
0 OPTIONS, SIZE=4096000,MAXLIM=4096000,MINLIM=102400,EQUALS=H,LIST=BY,ERET=RC16,MSODIN=,SORTM30  
0 OPTIONS, VIO=H,EXCPVR=H,RESOUT=NONE,SHP=NO, MKKSEC=H,OUTSEC=BY,VERIFY=H,CHALY=H,DYNALOC=H  
0 OPTIONS, RESALL=C0152,RESINVC=131072,SVC=C0109,CHECK=BY,HRKREL=BY,OUTREL=H,CKPT=H,STIMER=H  
0 IN MAIN STORAGE SORT  
0 INSERT 451, DELETE 451  
0 RECORDS IN, 0, OUT, 0  
0 NUMBER OF BYTES SORTED: 244893  
0 END OF SORT/MERGE

5. - 1.

Abnormalities	61, 200	Age, Children at 1-Year	82
207, 208, 211, 292, 295		97, 257, 410, 413, 469	
317, 320, 497, 500, 555		470, 567	
Abnormalities, Chromosomal		Age, Children at 3-years	96
280, 459, 460, 461		97, 98, 103, 106, 109	
Abnormalities, Electroencephalographic		270, 489, 521	
256, 527		Age, Children at 4-years	1
Abnormalities, Fetal	515	4, 5, 39, 60, 53	
Abnormalities, Neurologic		60, 69, 81, 96, 98	
11, 16, 20, 62, 115		109, 113, 244, 248, 294	
150, 158, 207, 209, 216		285, 410, 470, 473, 477	
246, 250, 275, 285, 353		515, 527, 563, 564, 567	
409, 422, 467, 469, 552		Age, Children at 7-years	52
Abnormalities, Placental	93	49, 67, 60, 62, 74	
352, 352, 355, 357, 362		75, 84, 96, 109, 110	
363, 369, 382, 383, 388		112, 105, 220, 223, 224	
389, 394, 395, 420, 455		230, 231, 232, 233, 234	
Abortion, Spontaneous	314	235, 236, 244, 271, 280	
397, 398, 400, 402		284, 286, 316, 414, 430	
Abortions, Classification of	151	460, 461, 467, 518, 526	
		537, 551, 552, 554	
Abruptio Placentae	349, 352	Age, Children at 8-Months	270
355, 359, 368, 370, 376		26, 42, 244, 246, 270	
387, 388, 428, 442, 444		475, 475, 564	
465, 469		Age, Children at 3-years	27
Academic Performance	74	107, 220, 254, 270, 280	
89, 111, 230		456, 466, 461, 552, 554	
Accidents, Fatal	345	Age, First Year	21
Acetonuria in Pregnancy	53	28, 31, 74, 75	
365, 379, 380, 384		109, 115, 190, 209, 216	
Adolescent, Pregnancy	33	260, 320, 403, 512, 515	
35, 352		421, 527, 537	
Adolescent Mothers	304	Age, Gestational	14
Adoption	111	23, 25, 69, 83, 94	
African City	396	55, 56, 66, 84, 90	
		119, 120, 128, 129, 143	
		149, 151, 168, 170, 182	
		185, 203, 207, 208, 214	
		216, 251, 262, 295, 294	
		305, 309, 348, 350, 354	
		355, 358, 385, 389, 390	
		391, 392, 347, 415, 419	
		453, 462, 463, 475, 481	
		512, 532, 523, 535, 553	

## SUBJECT INDEX

- Age, Maternal 23, 119  
 214, 255, 278, 280, 286  
 290, 319, 368, 398, 400  
 402, 441, 442, 465, 466  
 447, 448, 501, 526, 541  
 550, 553
- Age, School 70, 89  
 100
- Alcohol Syndrome, Fetal 258
- Alcoholism, Maternal 258
- Altitude 305
- American Caucasians 496, 566
- American Negroes 524, 566
- Amniotic Fluid Infections  
 30, 344, 349, 350, 353  
 354, 355, 356, 359, 360  
 361, 377, 378, 380, 391  
 392, 394, 396, 426, 523  
 539
- Amphetamine 367
- Analgesics 7, 121
- Anesthesia 267
- Anesthesia 7, 9  
 466
- Anesthetics 28, 121
- Animal Models 85, 287
- Anomalies, CNS 50, 51  
 57, 27, 205, 323, 325  
 329, 330, 341, 356, 502
- Anomalies, Congenital 6  
 22, 46, 50, 78, 126  
 137, 138, 139, 209, 212  
 221, 228, 252, 264, 300  
 313, 314, 315, 317, 323  
 324, 325, 326, 327, 331  
 341, 348, 349, 355, 356  
 359, 360, 366, 468, 486  
 487, 498, 504, 505, 506  
 514, 516, 517
- Anoxia 32, 60  
 441, 442, 445, 446, 447  
 448, 514
- Antenatal Exposure 221, 227  
 504, 505, 517
- Anthropology, Physical 157
- Antibodies, Cytotoxic 502
- Antibody Titer 218, 314  
 496
- Anticonvulsant Drugs 24  
 239, 504
- Anticonvulsant Therapy 200  
 404, 405, 415, 454
- Anticonvulsants, Hydantoin  
 200, 201, 202, 508
- Antigen, HLA 58
- Anticops, Multiple 498
- Antinauseants 505, 506
- Apgar Scores 9, 11  
 12, 13, 14, 17, 20  
 26, 40, 65, 80, 81  
 82, 83, 84, 101, 132  
 164, 173, 174, 190, 191  
 197, 275, 304, 359, 392  
 415, 416, 418, 422, 436  
 445, 446, 447, 451, 482  
 484, 520, 522, 569
- Apgar Scores, Smoking 163

523 - 11

Aplasia of Sphenoid Wings	328	Bayley Motor Scale	25, 48 42, 53, 54, 130, 150 173, 176, 194, 216, 246 260, 342, 484, 551, 561 562
Apnea, Neonatal	356	Behavior, Female	85, 86
Asphyxia	11, 17 56, 101, 192, 197, 419 436, 439, 451	Behavior, Male	86, 307
Aspirin	514	Behavioral Characteristics	195, 269, 270
Aspirin Exposure in Pregnancy	507, 514, 516	Behavioral Testing of Newborn	474, 475, 476, 477
Asthma, Bronchial, Maternal	196	Bender-Gestalt Test	110, 194 230, 251, 551, 552, 554
Asymmetries, Gyri	49	Benedectin	505
Asymmetries, Morphological	49	Benn Index	170
Attrition Rate	62	Bilirubin	272
Audiometric Screening,	27 472	Bilirubin, Measurement of Free	272
Audiometry	27	Bilirubin, Serum, Neonatal	26, 216, 353, 481
Auditory Memory	270	Bilirubin Toxicity	272, 353 481
Auditory Screening, Clinical	210	Birth Defects	227, 228 250, 504, 516
Australian Antigen	429	Birth Defects, Cardiovascular	152, 225, 227, 250, 309 311, 312, 502
Autism	104, 528	Birth Defects, Cardiovascular, Epidemiology of	225
Bacteria, Clinical	499	Birth Interval	29
Bayley Motor Scale	25, 48 42, 53, 54, 130, 150 173, 176, 194, 216, 246 254, 260, 342, 484, 551, 561 562	Birth Order of Twins	569



- Birth Height  
   13, 23, 25, 26, 29, 4  
   30, 53, 54, 66, 80  
   81, 82, 83, 90, 114  
   115, 134, 145, 146, 149  
   150, 162, 168, 171, 174  
   179, 180, 182, 189, 206  
   207, 213, 216, 247, 248  
   261, 266, 278, 287, 295  
   296, 305, 354, 385, 393  
   399, 419, 442, 443, 444  
   445, 446, 447, 448, 452  
   453, 462, 463, 483, 505  
   507, 512, 517, 522, 543  
   544, 546, 549, 550, 553
- Birth Height, Low 41, 59  
   64, 84, 113, 183, 209  
   214, 279, 309, 437, 451  
   452, 458, 479, 481, 492  
   493, 496, 525
- Birth Heights In Twins 162
- Birthweight, Maternal 261
- Blacks, Nutrition 154
- Bleeding During Pregnancy 276, 466, 528
- Blood Group Incompatibility, Maternal-Fetal 61, 502
- Blood Lead 73
- Blood Pressure 223
- Blood Pressure In Pregnancy 119, 120, 129, 351, 372, 373
- Body Measurements 170, 171  
   174, 179, 184
- Brain, Fetal 11, 20  
   49, 192, 532, 533, 534
- Brain, Rubella 259
- Brain Damage, Fetal 273, 298  
   436, 441, 531
- Brain Development 193, 302  
   306
- Brain Dysfunction, Minimal 34, 74, 430, 435, 536  
   538, 534
- Brain Dysfunction, Neonatal 390, 536
- Brain Stem Injury, Neonatal 529, 530
- Brain Weight 148
- Brain Weight, Low 259
- Branchial Cleft Malformations 299, 331
- Breech Delivery 23, 126  
   529
- Bronchial Asthma, Maternal 196
- Buccoliquinal 169
- Bureau of the Census, U.S. 337
- Butanol-Extractible Iodine (BEI), Serum 283
- Cancer, Testicular 78
- Carcinoma in Situ(CIS) 45  
   141
- Cardiovascular Birth Defects 152, 225, 227, 250, 309  
   311, 312, 502
- Cardiovascular Malformations, Epidemiology of 225
- Caucasian Dermatoglyphics 464
- 100

Caucasians, American 566	496	Child Death	221
Central Nervous System (CNS) Damage 198, 473, 529, 532, 534 556		Child Growth Deficiency	258
Central Nervous System (CNS) Infection	491	Child Length 410	189, 213
Central Nervous System (CNS) Malformations 57, 87, 205, 323, 325 329, 330, 341, 356, 502		Child Maltreatment	224, 226
Cerebral Hemorrhage	52, 530 535	Children, Disadvantaged	219
Cerebral Hypoxic Lesions	531	Children, Inner-City 219, 220, 462, 463, 526 552	73 526
Cerebral Lesions	192	Children, Preschool	27
Cerebral Palsy 12, 52, 56, 60, 74 88, 90, 92, 209, 243 297, 409, 414, 415, 416 418, 419, 420, 422, 439 443, 520, 521, 531, 532 533		Children At One-Year of Age 52, 97, 257, 410, 411 469, 470, 567	
Cerebral Palsy, Classification of	411	Children at 5-Years of Age 96, 97, 98, 103, 106 109, 270, 480, 521	
Cerebral Palsy, Epidemiology of	414	Children at 4-Years of Age 1, 4, 5, 39, 40 53, 60, 69, 81, 96 98, 109, 113, 244, 246 284, 285, 410, 470, 473 477, 511, 527, 563, 564 567	
Cervical Canalization	141	Children at 7-Years of Age 32, 41, 47, 60, 62 76, 75, 84, 96, 109 110, 112, 165, 220, 223 229, 230, 231, 232, 233 234, 235, 236, 244, 271 280, 284, 286, 316, 414 430, 460, 461, 467, 518 526, 537, 551, 552, 554	
Cervical Dilatation-Time Curves	122, 123	Children at 8-Months of Age 26, 42, 244, 246, 470 473, 475, 564	
Cervix	45, 369	Children at 8-Years of Age 27, 107, 220, 234, 270 280, 456, 460, 461, 552 554	
Cervix, Incompetent	12, 438		
Cesarean Section	7, 9		
Channelization, Canalization	156		

## SUBJECT INDEX

- Chlordiazepoxide 221
- Chorangioma 139, 140
- Chorioamnionitis 146, 350  
369, 391
- Chorioangioma 139, 140
- Chorion Type 300
- Chorionic Somatomammotropin,  
Human 102
- Chorionic Veins 153
- Chromosomal Abnormalities  
280, 459, 460, 461
- Chromosomal Polymorphisms 281
- Chromosomes 279
- Circummarginate Placenta 8
- Circumvallate Placenta 8
- Classification of  
Cerebral Palsy 411
- Classification of  
Malformations 51, 323
- Cleft Malformations,  
Branchial 299, 331
- CNS Damage 3, 32  
198, 472, 529, 532, 534  
556
- CNS Development 84, 284  
287
- CNS Infection 491
- CNS Malformations 50, 51  
57, 87, 205, 323, 325  
329, 330, 341, 356, 502
- Cognitive Ability 77, 219  
239, 419
- Cognitive Development 34  
77, 269
- Coitus 237, 262  
361, 365, 366, 369, 370  
377, 378, 389, 394, 539
- Collaborative Perinatal  
Project (NICPP) 15, 16  
21, 22, 36, 79, 205  
266, 275, 288, 294, 318  
337, 349, 401, 443, 450  
457, 482, 497, 511, 548  
568
- Collaborative Perinatal  
Project Problems 16  
548
- Collaborative Study, Johns  
Hopkins 68, 203  
204, 210, 211, 313
- Complement-Fixation Tests 498
- Computer Analysis of Labor  
122, 121, 124, 125, 126
- Confluence Modul 29
- Congenital Deafness 210, 283  
472
- Congenital Heart Disease 152  
225, 227, 250, 309, 311  
312, 502
- Congenital Heart Disease,  
Epidemiology of 225
- Congenital Heart Disease,  
Incidence of 311, 312
- Congenital Hypothyroidism 519  
522

- Congenital Infections 291  
   391, 503
- Congenital Malformations 6  
   22, 46, 50, 78, 136  
   137, 138, 139, 209, 212  
   221, 228, 252, 264, 300  
   313, 314, 315, 317, 323  
   324, 325, 326, 327, 331  
   341, 348, 349, 355, 356  
   359, 360, 366, 468, 486  
   487, 488, 504, 505, 506  
   514, 516, 517
- Congenital Malformations, Incidence Of 50, 137, 331
- Congenital Malformations, Risks of 51, 331
- Congenital Marrow Dysfunction 547
- Congenital Myasthenia 256
- Congenital Pneumonia 391
- Congenital Rubella 44, 46  
   87, 204, 207, 208, 211  
   217, 218, 251, 259, 292  
   293, 313, 485, 488, 489  
   490, 491, 497, 500, 503  
   555, 565
- Conjoined Twins 336
- Contraceptives, Oral 227, 250
- Coproporphyrin Urine Test 71
- Cord, Prolapsed Umbilical 444, 447
- Cord Around Body, Umbilical 522
- Cord Blood Measurements 101
- Correlates, Early Developmental 22  
   32, 39, 40, 130, 194  
   260, 527
- Correlates, Etiologic 312
- Correlates, Intellectual 57  
   68, 245, 254, 439
- Correlates, Neonatal 19  
   32, 39, 42, 95, 97  
   115, 165, 188, 212, 217  
   237, 257, 265, 283, 304  
   313, 360, 392, 440, 445  
   446, 472, 512, 513, 527
- Correlates, Neurological 18  
   66, 230, 471, 556
- Correlates, Perinatal 7  
   48, 93, 116, 136, 137  
   169, 181, 196, 211, 252  
   264, 274, 299, 304, 361  
   403, 434, 441, 442, 448  
   470, 493, 516, 557, 560
- Correlates, Postnatal 299  
   518
- Correlates, Prenatal 39  
   40, 165, 518, 549
- Correlates, Psychological 471  
   1, 75, 100, 283, 471  
   472, 479, 556, 559
- Correlates of Hearing 270
- Correlates of Language 36  
   106, 270
- Correlates of Speech 106  
   270
- Craniofacial 328
- Criminal Behavior, Delinquency 76  
   54

## SUBJECT INDEX

- Cross-Placental Thyroid Activity 64  
 Crown Size 169  
 Crown Size, Epidemiology of 169  
 Cryptorchidism 78  
 Cultural Differences 85  
     219  
 Cultural Influences 85, 116  
 Cytoarchitectonic Maturation 259  
 Cytogenetic Surveys 459, 461  
 Cytomegalovirus (CMV) Antibody 87, 141, 217, 264, 265, 485, 488, 489, 490, 505  
 Cytotoxic Antibodies 502  
 Data Analysis 548  
 Deafness, Congenital 210  
     283, 472  
 Death, Child 221  
 Death, Fetal 61, 127, 128, 129, 209, 319, 327, 347, 351, 360, 449, 468, 510, 529, 531  
 Death, Infancy, Epidemiology of 59, 345  
 Death, Intrapartum Fetal 274  
 Death, Maternal 290  
 Death, Neonatal 2, 7, 10, 11, 12, 13, 23, 36, 80, 82, 83, 145, 146, 149, 152, 209, 252, 309, 314, 318, 319, 327, 347, 351, 356, 359, 360, 385, 415, 437, 444, 449, 458, 468, 483, 500, 529, 530, 531, 532, 535, 553  
 Death Rate, Perinatal 59  
     119, 120, 132, 137, 138, 147, 149, 196, 212, 226, 237, 255, 258, 262, 275, 296, 304, 305, 310, 325, 347, 348, 349, 352, 355, 357, 361, 362, 363, 365, 367, 368, 387, 388, 391, 396, 397, 436, 440, 441, 442, 443, 446, 447, 448, 450, 451, 505, 507, 517, 522, 523, 543, 568, 569  
 Decidual Necrosis 368  
 Delivery, Breech 23, 126  
     529  
 Delivery, Preterm 359  
 Delivery, Type of 7, 9, 12, 13, 23, 131, 134, 252, 322, 447, 449, 451, 522, 543, 558, 559  
 Delivery Due Dates 358  
 Delivery-Labor Factors 15  
     19, 36, 121, 122, 125, 125, 344, 450, 462, 510  
 Demographic Factors 19, 21, 22, 51, 129, 169, 196, 209, 212, 274, 289, 294, 337, 390, 443, 471  
 Dental Lead 168  
 Dentition 168

- 735277 - 117

- Dermatoglyphics 300, 464  
   524
- DES Exposure 224
- Development, Cognitive 34  
   77, 269
- Developmental Correlates:  
   Early 22, 32  
   39, 40, 130, 194, 260  
   527
- Diabetes in Pregnancy 50  
   51, 53, 54, 148, 168  
   252, 312, 383, 389, 540
- Diabetes Mellitus 54, 58  
   383, 540
- Diagnosis of Hypertension  
   in Pregnancy 128
- Diamniotic-Dichorionic  
   Placentas 147, 300  
   301, 327
- Dichotomous Responses 257
- Dicyclomine Hydrochloride 505
- Diethylstilbestrol Exposure 224
- Dilatation, Secondary  
   Arrest of 125
- Dilatation-Time Curves,  
   Cervical 122, 123
- Diphenylhydantoin (DPH) 515
- Diplegia, Spastic 55, 56  
   411
- Disability, Motor 409
- Disadvantaged Children 219
- Disease, Hypertensive in  
   Pregnancy 120
- Disease, Tay-Sachs 339
- Disorder, Learning 36, 75  
   105, 435, 465
- Disorders, Neurologic 21  
   24, 36, 75, 416, 440  
   444, 532, 533, 538
- Disorders, Seizure 90, 418  
   421, 422, 427, 520, 556
- Disseminated Intravascular  
   Coagulation 298
- Dizygotic Twins 301, 327  
   396
- Dizygotic Twins,  
   Malformations in 322
- Dominance, Cerebral 343
- Down's Syndrome 282, 312  
   314, 424, 547
- Down's Syndrome, Epidemiology  
   of 495
- Doxylamine Succinate 505
- Draw-e-Person Test (DAP),  
   Goodenough-Harris 235  
   271
- Drug Exposure, Fetal 222  
   366
- Drug Exposure, Maternal 79  
   128, 201, 315, 366, 515  
   516
- Drug Exposure, Prenatal 224  
   366
- Drugs, Anticonvulsant 24

- Drugs, Evaluation of 228  
 515, 516, 542
- Drugs In Pregnancy 12, 15  
 79, 224, 227, 228, 270  
 289, 366, 507, 542
- Due Dates, Delivery 358
- Dysfunctional Labor 130, 131  
 132, 133, 134, 197
- Dysmaternity 526
- Dystocia, Mechanical, Fetal 543
- Dystocia, Mechanical, Maternal 543
- Ear Malformations, External 299
- Early Developmental Correlates  
 22, 32, 39, 40, 130  
 194, 260, 527
- Echo-Reaction 104, 105  
 106, 107, 480
- Echolalia 104, 107, 480
- Eclampsia 288
- Edema In Pregnancy 119, 120  
 129
- Education, Parental 337  
 399, 562
- Education, Maternal 18, 81  
 112, 182, 184, 188, 304
- Educational Correlates 479
- EEO Measurements  
 (Electroencephalographic)  
 42, 94, 95, 97, 100  
 108, 233, 257, 527
- Eccentric Speech 103
- Electroencephalographic  
 Abnormalities 256, 527
- Electroencephalographic  
 Measurements (EEO)  
 94, 95, 97, 100, 108  
 233, 257, 527
- Embryo 151, 487
- Embryology 102
- Endemic Colter 283
- Endocardial Fibroelastosis, 310  
 Primary
- Endocardial Fibroelastosis,  
 Primary, Epidemiology of 310
- Environment, Intrauterine 468
- Environmental Factors 69  
 119, 159, 366, 431, 443  
 463
- Epidemiology of Cardiovascular  
 Malformations 225
- Epidemiology of Cerebral Palsy  
 414
- Epidemiology of Crown Size 169
- Epidemiology of Febrile  
 Seizures 91, 199  
 238, 406
- Epidemiology of Infancy Death  
 59, 345
- Epidemiology of Malformations  
 51, 222, 299, 322, 325  
 326, 329, 332

5277 - 118

- Epidemiology of Mongolism 495
- Epidemiology of Primary Endocardial Fibroelastosis 310
- Epidemiology of Rubella 204  
208, 251, 313, 497, 501  
555
- Epidemiology of Skull Defects 328
- Epidemiology of Twins 319
- Epidural Hemorrhage 529
- Epilepsy 201, 239  
243, 297, 320, 405, 412  
413, 414, 427, 504, 508
- Epilepsy, Child 88, 243  
297, 320, 406
- Epilepsy, Maternal 24, 67  
315, 428
- Epilepsy, Parents 320
- Epilepsy, Predictors Of 4:3
- Epilepsy, Siblings 320
- Epistaxis 58
- Erythroblastosis Fetalis, Rh 148, 355
- Erythrocytes, Sickled 144  
153
- Estrogen, Prenatal 86
- Ethnic Differences 252, 325
- Etiologic Correlates 312
- Evaluation, f. Drugs 228, 515  
516, 542
- Examinations, Neurologic 9  
567
- Examinations In (NCCP) Perinatal Project 22  
79, 203, 443
- Examinations of Speech, Language, Hearing (SLH) 103, 270, 457
- Examiners, (SLH), Speech, Language, Hearing 270
- Exercise 30
- Exposure, Antenatal 221, 227  
504, 505, 517
- Exposure, DES 224
- Exposure, Diethylstilbestrol 224
- Exposure, Drug, Fetal 222  
366
- Exposure, Drug, Maternal 79  
128, 201, 315, 366, 515  
516
- Exposure, Drug, Prenatal 224  
366
- Exposure, Lead, Asymptomatic 69, 70
- Exposure, Radiation 509
- Exposure to Narcotics, Prenatal 198
- External Ear Malformations 299
- Extracardiac Malformations 527  
310, 311
- Extrachorial Placenta 8
- Eye-Hand Dominance 116, 343



- Factors, Obstetric 16, 25  
     60, 139, 142, 209, 274  
     289, 290, 351, 401, 438  
     495
- Factors, Perinatal 20, 21  
     62, 109, 112, 116, 127  
     134, 161, 213, 218, 229  
     246, 256, 270, 294, 409  
     466, 528, 537
- Factors, Socioeconomic 36  
     76, 111, 119, 184, 214  
     219, 294, 393, 399, 462  
     466
- Familial 261, 431  
     58, 159
- Family History 103, 482
- Family Income 184, 337  
     399
- Family Size, IQ 29
- Fetal Accidents 345
- Febrile Seizures 63, 89  
     91, 118, 191, 199, 238  
     240, 241, 253, 277, 404  
     405, 406, 407, 408, 412  
     413, 423, 424, 425, 426  
     427, 434, 545
- Febrile Seizures, Epidemiology of 91, 199  
     238, 404
- Febrile Seizures, Treatment of 118, 238, 406
- Female Behavior 85, 86
- Female Sex Hormones 86, 227  
     250
- Fetal, Mechanical Dystocia 543
- Fetal Abnormalities 515
- Fetal Alcohol Syndrome 258
- Fetal Arteries, Unilateral  
     Thickening of 143
- Fetal Brain 11, 20  
     49, 192, 532, 533, 534
- Fetal Characteristics 268
- Fetal Death 61, 127  
     128, 129, 209, 319, 327  
     347, 351, 360, 449, 468  
     510, 529, 531
- Fetal Death, Intrapartum 274
- Fetal Development 160, 300  
     330, 551
- Fetal Disorders 357, 362  
     363, 481
- Fetal Distress 10, 17  
     18, 19, 448
- Fetal Drug Exposure 222, 366
- Fetal Growth Deficiency 202  
     302, 347
- Fetal Growth Retardation 364  
     371, 372, 374, 385, 393  
     455
- Fetal Growth Standards 385
- Fetal Head Position 470, 558
- Fetal Heart Rate (FHR) 10  
     19
- Fetal Hydrantoin Syndrome 200  
     308
- Fetal Hypoxia 11, 346  
     356, 359, 436, 451, 535  
     536, 535, 277
- Fetal Maturity 149

Fetal Morbidity	9, 395		
441, 442, 445, 446, 447			
448			
Fetal Outcome	7, 9		
20, 61, 66, 80, 117			
127, 132, 168, 196, 197			
204, 205, 206, 207, 211			
252, 278, 313, 314, 363			
382, 383, 440, 444, 449			
450, 462, 463, 469, 485			
503, 510, 525, 543			
Fetal Presentation	126, 447		
Fetus	12, 46		
64, 93, 121, 149, 152			
161, 237, 354, 385, 485			
487, 489, 490, 532, 533			
535, 536			
FHR, Fetal Heart Rate	10		
19			
Finger Prints	464, 524		
First Year of Life	2, 21		
25, 28, 31, 74, 75			
109, 115, 190, 209, 216			
260, 320, 403, 512, 513			
521, 527, 537			
Forebrain Parietella Permeana	323		
Forceps, Low, Operation	449		
Free Bilirubin, Measurement of	272		
Full-Term Infants, Undersized	5		
Full-Term Necrotas	5, 108		
533, 538			
Funlitis	350		
Gene-Environment	338, 431		
468			
Generational Trend, Growth	157		
Genetic Factors	51, 56		
100, 154, 176, 251, 299			
326, 330, 333, 334, 339			
342, 401, 431, 432, 463			
564			
Genetic Limitation	219		
Genetic Load	329, 330		
Genetic Variation	179, 219		
223, 301, 302, 434			
Geographic Differences	46		
144			
Geographic Factors	339, 432		
Geographic Racial Factors	182		
Germlinal Matrix Infarction	531		
Gestational Age	4, 14		
23, 231, 49, 53, 54			
55, 56, 66, 84, 90			
119, 120, 128, 129, 143			
149, 151, 168, 174, 182			
183, 202, 207, 208, 214			
216, 252, 262, 295, 296			
305, 309, 348, 350, 354			
355, 358, 385, 390			
391, 392, 397, 415, 419			
453, 462, 463, 475, 481			
512, 532, 533, 535, 553			
Gestational Age, Prolonged	355		
Gestational Infarction	264		
Glomerulonephritis, Maternal	119		
Golfer, Endemi.	283		

56 - 1

## SUBJECT INDEX

- Goodenough-Harris Draw-a-  
 Person Test (DAP) 235  
 271
- Gravida, Age 23, 119  
 216, 255, 278, 280, 286  
 290, 319, 368, 398, 400  
 402, 441, 442, 445, 446  
 447, 448, 501, 526, 541  
 550, 553
- Gravida Characteristics 13  
 39, 40, 70, 79, 84  
 128, 137, 142, 197, 214  
 225, 268, 289, 294, 308  
 318, 326, 388, 401, 443  
 450, 452, 461, 462, 463  
 537, 549, 557
- Gravidity 8, 25  
 119, 120, 124, 125, 162  
 214, 252, 255, 276, 352  
 398, 402, 541, 546, 550
- Growth, Determinants Of 157
- Growth, Generational Trend 157
- Growth, Postnatal 102, 156  
 184, 540
- Growth, Prenatal 100, 142  
 367
- Growth Deficiency, Child 758
- Growth Deficiency, Fetal 202  
 308, 347
- Growth Patterns, Physical  
 111, 112, 113, 138, 165  
 179, 184
- Growth Retardation 375, 388
- Growth Retardation, Fetal  
 364, 371, 372, 374, 385  
 393, 455
- Growth Retardation, Placental  
 162, 347, 352, 355, 360  
 368, 387
- Growth Standards, Fetal 385
- Gyri, Asymmetries 49
- Gyrus, Superior Temporal 49
- Gyrus, Transverse Temporal 49
- H-1 Virus 314
- Half Siblings, Malformations  
 1, 526
- Hand-Eye Dominance 116, 343
- Head Circumference 102, 174  
 179, 184, 189, 410
- Head Position, Fetal 470  
 558
- Hearing, Correlates of 270
- Hearing, Loss 27, 270  
 299
- Hearing-Speech-Language  
 Outcome at 3 Years 134  
 513
- Hearing Survey 27
- Heart Disease, Maternal 312  
 440, 441
- Height, Maternal 171, 180
- Hemagglutination Antigen, (HA) 494

- Hemagglutination-Inhibition Test, (HI) 87, 314  
 494, 498
- Hematocrit, Infant 52, 55  
 183, 185
- Hematocrit, Maternal 166  
 174, 175, 177, 178, 490
- Hematocrit, Race Specific Norms 154
- Hemiplegia 412
- Hemoglobin, Infant 183, 185  
 249
- Hemoglobin, Maternal 166  
 174, 175, 177, 178, 181  
 249
- Hemoglobin, Race Specific Norms 154
- Hemorrhage, Cerebral 52  
 530, 535
- Hemorrhage, Epidural 529
- Hemorrhage, Intracranial 409
- Hepatitis 282, 429
- Heredity 156, 159
- Hernias 217
- Hernias, Indirect Inguinal 78, 217
- Heroin Withdrawal 198
- Herpes Simplex 265, 485  
 439, 503
- Herpesvirus Antibody 45  
 264
- High-Risk Registry 27
- Histocompatibility 58
- History, Family 103, 482
- HLA, Antigen 58
- Hormone, Thyroid-Stimulating (TSH) 283, 319
- Hormone Effects, Prenatal 78, 85, 86, 306, 307
- Hormones, Sex, Female 86  
 227, 250
- Hormones, Thyroid 64
- Housing 73
- Housing, Substandard 72
- Human Development 557, 560
- Human Teratogens 57, 201  
 330, 364, 486, 508, 542
- Hyaline Membranes 145, 152  
 523
- Hydantoin Anticonvulsants 200, 201, 202, 568
- Hydantoin Syndrome, Fetal 200, 508
- Hyperactivity 47, 48  
 74, 435, 467
- Hyperbilirubinemia 26, 252  
 272, 353, 392, 481, 538
- Hyperkalemia 101
- Hypertension, Diagnosis in Pregnancy 128
- Hypertension in Pregnancy 119, 127, 128, 129, 168  
 351, 357, 365, 387, 588

52. -1.

- Hypertensive Disease in Pregnancy 120
- Hyperthermia 57
- Hypotension in Pregnancy 127
- Hypothyroidism, Congenital 519
- Hypothyroidism In Pregnancy 168, 284
- Hypothyroxinemic Women 283
- Hypoxia, Intrapartum 11  
346, 356, 359, 436, 451  
532, 534, 535
- Hypoxia, Perinatal 444
- Hypoxic Lesions, Cerebral 531, 533, 536
- IgM Macroglobulin Levels 490  
503
- Immunization, Childhood 63  
240, 241
- Immunization, Seizures and 63, 240, 241
- Immunization During Pregnancy Against Influenza 226
- Immunization During Pregnancy Against Poliomyelitis 226, 515
- Immunoglobulin G Screening (IGG) 212
- Immunoglobulin Levels 61  
205, 212, 291, 292, 293  
295, 486, 496, 503, 555
- Immunoglobulin M Screening, Neonatal 292, 293, 295
- Impairment, Psychomotor 353  
374, 384
- Impairment, Sensory 16, 209  
353
- Incidence of Congenital Heart Disease 311, 312
- Incidence of Congenital Malformations 50, 137
- Incidence of Seizures 190
- Income, Family 184, 337  
399
- Income, Per Capita 177, 178  
180, 182, 185, 187
- Infancy Death, Epidemiology of 59, 345
- Infant Death Syndrome 2  
36, 93, 242, 350, 381  
386, 390
- Infant Development 28, 31  
36, 94, 116, 248, 512  
561
- Infant Infections 2, 380
- Infant Mortality 59, 119  
120, 132, 137, 138, 147  
149, 196, 212, 226, 237  
255, 258, 262, 275, 296  
304, 305, 310, 325, 347  
348, 349, 352, 355, 357  
361, 362, 363, 365, 367  
368, 387, 388, 391, 396  
397, 436, 440, 441, 442  
445, 446, 447, 448, 450  
452, 505, 507, 517, 522  
525, 543, 568, 569
- Infant Seizures 190, 191
- Infant Vocalization 472

- Infants, Full-Term 5, 108  
     535, 538  
 Infants, Mongoloid 289  
 Infants, Preterm 56, 356  
 Infants, Undersized Term 5  
 Infarction, Germinal Matrix 531  
 Infarction, Placental 349  
     351, 359, 366, 367, 393  
 Infarction, Subependymal 535  
 Infection, Central Nervous System (CNS) 491  
 Infection, Gestational 264  
 Infections, Amniotic Fluid  
     30, 344, 349, 350, 353  
     354, 355, 356, 359, 360  
     361, 377, 378, 380, 391  
     392, 394, 396, 426, 523  
     539  
 Infections, Bacterial 499  
     523  
 Infections, Congenital 291  
     391, 503  
 Infections, Infant 2, 380  
 Infections, Intrauterine 30  
     146, 267, 292, 293, 380  
     503  
 Infections, Maternal 485  
     493, 499, 523  
 Infections, Maternal Urinary Tract 273, 357  
     380, 492  
 Infections, Parasitic 499  
     557, 561  
 Infections, Perinatal 205  
     267, 485, 490, 493, 499  
     510, 523  
 Infections, Respiratory Tract 345  
 Infections, Viral, in Pregnancy  
     46, 87  
     211, 251, 264, 265, 486  
     487, 488, 489, 490, 499  
     503  
 Influenza A 264, 265  
 Influenza Immunization During Pregnancy 226  
 Inner-City Children 73, 219  
     220, 462, 463, 526, 552  
 Institutional Distributions 125  
 Intellectual Correlates 57  
     68, 445, 254, 439  
 Intellectual Development  
     4  
     20, 32, 206, 209, 213  
     221, 446, 340, 341, 342  
     563, 564  
 Intellectual Performance 5  
     89, 197, 208, 229, 248  
     266, 278, 316, 432, 558  
 Intelligence, Maternal 111  
     245, 456  
 Intelligence, Superior 112  
     562  
 Intelligence Measurement 17  
     219, 271, 434  
 Intelligence Test, Stanford-Binet  
     4, 5  
     18, 53, 54, 81, 96  
     98, 103, 116, 254, 551  
     557, 561

- Interracial 403, 563  
     564
- Intracranial Hemorrhage 409
- Intrapartum Fetal Death 274
- Intrapartum Hypoxia 11, 346  
     356, 359, 436, 451, 532  
     534, 535
- Intrauterine Environment 468
- Intrauterine Growth 5, 462  
     463
- Intrauterine Infections 30  
     146, 267, 292, 293, 380  
     503
- Intrauterine Malnutrition 150
- Intrauterine Pneumonia 146
- Iodine, Butanol-Extractable (BEI), Serum 283
- IQ  
     36, 69, 70, 76, 18, 19  
     89, 95, 96, 99, 100  
     106, 112, 114, 134, 138  
     150, 191, 207, 214, 219  
     233, 264, 270, 284, 286  
     306, 405, 409, 410, 434  
     451, 454, 505, 517, 528  
     556
- IQ, Family Size 29
- IQ, Low 279, 431  
     39, 233
- IQ, Preschool 40
- IQ Impairment 200, 284  
     353
- IQ In Twins 266, 301
- IQ Tests, 111, 198  
     219, 234, 287, 341, 342  
     434, 466, 552
- IQ Tests, Problems In 219  
     434
- IQ Tests, Validity Of 219
- IQ Variability 301, 560
- Jaundice 272
- Jewish Populations 339
- Johns Hopkins Collaborative Study 68, 203  
     204, 210, 211, 313
- Ketonuria in Pregnancy 53  
     355, 379, 380, 384
- Labor, Computer Analysis of 126
- Labor, Dysfunctional 130  
     131, 132, 133, 134, 197
- Labor, Graphic Diagnosis of 130, 132, 133
- Labor-Delivery Factors 15  
     19, 36, 121, 122, 125  
     135, 344, 450, 482, 510
- Language, Correlates of 36  
     106, 270
- Language Function 49, 98  
     220
- Language-Hearing-Speech Outcome at 3 Years 134  
     513
- Language Performance 96  
     97, 99, 104
- Language Style, Cultural 219

Least Menstrual Period (LMP)	358, 553	Low Birth Weight	41, 59 64, 84, 113, 183, 209 214, 279, 309, 437, 451 452, 458, 479, 481, 492 493, 496, 525
Latency Response, Verbal	480	Low Brain Weight	259
Laterality	343	Low IQ	219, 431
Lead, Dental	73	Lung Maturation	523
Lead Exposure, Asymptomatic	69, 70	Macrolactulin Levels, IgM	490, 503
Lead in Blood	73	Male Behavior	86, 307
Lead Poisoning	71, 72	Malformations, (CHS) Central Nervous System	51 57, 87, 205, 323, 325 329, 330, 341, 356, 502
Lead Poisoning, Treatment of	72	Malformations, Branchial Cleft	299, 331
Leanness	114	Malformations, Cardiovascular	152, 225, 227, 250, 309 311, 312, 502
Learning Disabilities	36	Malformations, Classification of	51
Learning, Disorder	36, 75	Malformations, Congenital	5, 22, 46, 50, 78 136, 137, 138, 139, 209 212, 221, 228, 252, 264 300, 313, 314, 315, 317 323, 324, 325, 326, 327 331, 341, 348, 349, 355 356, 359, 360, 366, 468 481, 487, 488, 504, 505 506, 514, 516, 517
Learning, Disorder	105, 435, 465	Malformations, Congenital, Incidence of	50, 137, 138, 331
Left-Right Asymmetries	49	Malformations, Congenital, Risks of	51, 331
Length, Child	189, 213		
Lesions, Cerebral	192		
Leukoencephalopathy	273		
Light Sensitivity	3		
Linkage	58		
LMP, Last Menstrual Period	358, 553		
Longitudinal Study	275, 294		
Louisville Twin Study	102 434		



- Malformations, Epidemiology of  
31, 222, 299, 322, 325  
326, 329, 332
- Malformations, External Ear 299
- Malformations, Extracardiac  
310, 311
- Malformations, Skull 328
- Malformations in  
Dizygotic Twins 322
- Malformations in Half Siblings  
326
- Malformations in Monozygotic  
Twins 322, 328
- Malformations in Siblings 516
- Malformations in Singletons  
322, 324, 332, 338
- Malformations in Twins 321  
322, 324
- Malformations, Skull,  
Epidemiology of 328
- Malignancy, Child 224, 226
- Malnutrition, Intrauterine 150
- Malnutrition, Maternal 391  
396
- Marginal Sinus Rupture, 462  
(MSR)
- Marrow Dysfunction, Congenital  
547
- Maternal, Mechanical Dystocia  
563
- Maternal Age, 23, 119  
214, 255, 278, 280, 286  
290, 319, 368, 378, 400  
402, 441, 442, 445, 446  
447, 448, 501, 526, 541  
550, 553
- Maternal Alcoholism 258
- Maternal Bronchial Asthma 196
- Maternal Characteristics 13  
39, 40, 70, 79, 84  
128, 137, 142, 197, 214  
225, 263, 289, 294, 308  
318, 326, 388, 401, 403  
450, 452, 461, 462, 463  
507, 549, 557
- Maternal Death 290
- Maternal Diabetes 50, 51  
312, 383, 389, 540
- Maternal Education 18, 81  
112, 182, 184, 188, 304
- Maternal Factors 5, 25  
169, 304, 317, 440, 441  
442, 445, 446, 447, 448  
469, 471, 494, 510, 553
- Maternal-Fetal Incom-  
patibility, Blood Group and  
61, 502
- Maternal Heart Disease 312  
440, 441
- Maternal Infections 485, 493  
499, 523
- Maternal Obesity 160, 161  
162, 344
- Maternal Occupation 182, 393
- Maternal Pelvic Size 559

- Maternal Rubella 210, 211  
494, 500, 555
- Maternal Urinary Tract Infections 273, 357  
380, 492
- Maturatation 156, 158
- Mechanical Dystocia, Fetal 543
- Mechanical Dystocia, Maternal 543
- Medicine in Pregnancy 506
- Meconium Staining 152
- Medical Characteristics 270
- Medication, Obstetrical 28  
31, 37, 263
- Medication Toxicity 468
- Megroyprogesterone Acetate, (MPA) 85, 306  
307
- Membranes, Rupture, Premature 84, 305, 344, 349, 359  
369, 392, 510, 523
- Membranes, Intact 391
- Memory, Auditory 270
- Menarche, Age At 156, 157  
167
- Meningitis, Neonatal Bacterial 458
- Mental Deficiency 13, 15  
21, 22, 200, 247, 258
- Mental Development 3, 26  
69, 93, 96, 97, 113  
115, 453, 449, 474, 475
- Mental Retardation 6, 16  
24, 36, 38, 60, 79  
209, 243, 246, 273, 282  
283, 285, 286, 287, 297  
342, 355, 409, 411, 412  
414, 420, 421, 428, 429  
431, 521, 531, 534, 567
- Mental Retardation in Siblings 48
- Mental Scale, Bayley 25  
60, 62, 53, 54, 130  
150, 173, 174, 194, 216  
246, 254, 260, 269, 342  
433, 484, 551, 561, 562
- Meprobamate 221
- Mesiodistal 169
- Methodology, Research 548
- Microcephaly 200, 421
- Minimal Brain Dysfunction 36, 74, 430, 435, 536  
538, 554
- Minor Motor Seizures 412
- Model, Confluence 29
- Models, Animal 83, 287
- Mongolism 282, 312  
314, 429, 547
- Mongolism, Epidemiology of 495
- Mongoloid Infants 289
- Monozygotic Twins 41, 150  
298, 310, 301, 327, 396
- Monozygotic Twins, Malformations in 322  
338

52.22 - 128

## SUBJECT INDEX

- Morbidity, Fetal 9, 395  
 441, 442, 445, 446, 447  
 448
- Morphology, Asymmetrical 49
- Morphometry 268
- Mortality, Child 221
- Mortality, Fetal 61, 127  
 128, 129, 209, 319, 327  
 347, 351, 360, 449, 468  
 510, 529, 531
- Mortality, Maternal 290
- Mortality, Neonatal 2, 7  
 9, 10, 11, 12  
 23, 36, 80, 82, 83  
 145, 146, 149, 152, 209  
 252, 309, 314, 318, 319  
 327, 351, 356, 359  
 360, 385, 415, 437, 444  
 449, 458, 468, 483, 500  
 529, 530, 531, 532, 535  
 553
- Mortality, Perinatal 59  
 119, 120, 132, 137, 138  
 147, 149, 196, 212, 226  
 237, 255, 258, 262, 275  
 296, 304, 305, 310, 325  
 347, 348, 349, 352, 355  
 357, 361, 362, 363, 365  
 367, 368, 387, 388, 391  
 396, 397, 436, 440, 441  
 442, 445, 446, 447, 448  
 450, 452, 503, 507, 517  
 522, 525, 543, 568, 569
- Mothers, Adolescent 304
- Motor Development 3, 26  
 48, 69, 93, 96, 97  
 115, 449, 474, 475
- Motor Disability 409
- Motor-Perceptual Functioning 116
- Motor Scale, Bayley 25, 40  
 42, 53, 54, 130, 150  
 173, 174, 194, 216, 246  
 260, 342, 484, 551, 561  
 562
- Motor Seizures, Minor 412
- Motor Tests 111, 287  
 341
- MPA, Medroxyprogesterone 85, 306  
 307
- MSR, Marginal Sinus 442  
 Rupture
- Multivariate Analysis 525  
 551
- Mumps 264, 265  
 503
- Myelination, Delayed 259
- Narcotics, Prenatal, 198  
 Exposure to
- Nausea 505, 506
- NCPP, Collaborative Perinatal 15, 16  
 Project 21, 22, 36, 79, 205  
 246, 275, 288, 294, 318  
 337, 349, 401, 443, 450  
 457, 482, 497, 511, 548  
 568
- NCPP, Examinations in 22  
 79, 203, 443
- Negrees, American 524, 566
- Neonatal Apnea 356
- Neonatal Auditory Screening 210  
 523 - 127
- Neonatal Bacterial Meningitis 458

Neonatal Brachial Paralysis	197	Neonatal Spinal Cord Injury	529, 530
Neonatal Brain Dysfunction	390, 536	Neonatal Stress	260
Neonatal Brain Stem Injury	529, 530	Neonates, Full-Term	5, 108
Neonatal Characteristics	21	533, 538	
Neonatal Correlates	19, 32	Neoplasia	509
39, 42, 95, 97, 115		Nephrogenic Zone (PNZ)'s	149
165, 188, 212, 217, 233		Neural Tube Defects	329, 330
257, 265, 283, 304, 313		331	
360, 382, 440, 445, 446		Neurologic Abnormalities	11
472, 512, 513, 527		16, 20, 82, 115, 130	
Neonatal Death	2, 7	138, 107, 209, 216, 246	
8, 9, 10, 11, 12		256, 275, 283, 353, 409	
23, 36, 80, 82, 83		422, 467, 469, 552	
145, 146, 149, 152, 209		Neurologic Deficits	21, 22
252, 309, 314, 318, 319		36, 75, 416, 440, 444	
327, 347, 351, 356, 359		532, 533, 538	
360, 385, 415, 437, 444		Neurologic Disorders	21
449, 458, 468, 483, 500		22, 36, 75, 416, 440	
529, 530, 531, 532, 535		444, 532, 533, 538	
553		Neurologic Examinations	9
Neonatal Development	28	567	
31, 36, 94, 116, 248		Neurological Correlates	18
512, 561		66, 250, 471, 556	
Neonatal Factors	3, 36	Neurological Status	19, 25
98, 140, 473		34, 55, 115, 116, 196	
Neonatal IgG Screening	212	212, 248, 254, 260, 415	
Neonatal IgM Screening	212	439, 513, 521	
291, 292, 293, 295		Neuropathology	193
Neonatal Polycythemia	547	Newborn Behavioral Testing	474, 475, 476, 477, 478
Neonatal Seizures	209, 243	292, 293	
297, 409		Noncatastrophic Trauma During	117
Neonatal Serum Bilirubin	26	Pregnancy	
216, 353, 481		Nonsmokers	177, 186
		187, 315, 354, 388	

- Normative Values 189  
 Nuchal Colls. Umbilical Cord 522  
 Nurses 482  
 Nutrition 30, 154  
   156, 157, 159, 166, 170  
   174, 176, 523  
 Nutrition In Pregnancy 187  
   188, 366, 373, 374, 375  
   379, 380, 382, 388, 389  
 Nutritional Surveys 155, 177  
   181, 184  
 Nystagmus 256  
 Nystagmus, Congenital 256  
 Obesity 114, 156  
   157, 162, 540  
 Obesity, Maternal 160, 161  
   162, 344  
 Obstetric Factors 16, 25  
   60, 139, 142, 209, 274  
   289, 290, 351, 401, 438  
   495  
 Obstetric Procedures 12  
 Obstetrical Complications 151  
   8, 10, 13, 84,  
   196, 197, 225, 274, 288  
   368, 383, 401, 418, 439  
   441, 442, 445, 446, 447  
   448, 458, 470, 513, 520  
   522, 529, 530  
 Obstetrical Medication 28  
   51, 37, 265  
 Occiput Anterior Position 470  
   (OA)  
 Occiput Posterior Position 470  
   (OP)
- Occiput Transverse 126  
 Occult Prolapse of Umbilical Cord 448  
 Occupation, Maternal 182  
   393  
 Occupation, Parental 337  
   399  
 Ocular Disorders 565  
 Ocular Manifestations 565  
 Odontometrics 168  
 Oral Contraceptives 227, 250  
 Organ Height 148  
 Organism In Pregnancy 262, 438  
 Oxygen Diffusion Capacity, Placental 268  
 Oxygen Supply 305  
 Palm Prints 464, 524  
 Paralysis, Neonatal Brachial 197  
 Parasitic Infections 499  
 Parental Education 337, 399  
   562  
 Parental Occupation 337, 399  
 Parents, Schizophrenic 466  
   467, 468  
 Parity 8, 25  
   119, 120, 124, 125, 182  
   214, 252, 255, 276, 352  
   398, 402, 541, 546, 550
- Paternal Characteristics 51  
   112, 294, 326

- Pathology, Placental 93  
 350, 352, 355, 357, 362  
 363, 369, 362, 383, 388  
 389, 394, 395, 450, 455
- Patient Follow-up 68, 482  
 548
- Peabody Picture Vocabulary  
 Test (PPVT) 107, 456
- Pelvic Size, Maternal 559
- Perceptual-Motor Functioning 116
- Perinatal Correlates 7  
 48, 93, 116, 136, 137  
 169, 188, 196, 211, 252  
 264, 276, 299, 304, 361  
 403, 436, 441, 442, 448  
 470, 495, 518, 557, 560
- Perinatal Death Rate 59  
 119, 120, 132, 137, 138  
 147, 169, 196, 212, 226  
 237, 255, 258, 262, 275  
 296, 306, 303, 310, 325  
 347, 348, 349, 352, 355  
 357, 361, 362, 363, 367  
 367, 368, 387, 388, 391  
 396, 397, 436, 440, 441  
 442, 445, 446, 447, 448  
 450, 452, 505, 507, 517  
 522, 525, 543, 568, 569
- Perinatal Factors 20, 21  
 62, 109, 112, 114, 127  
 156, 161, 213, 218, 229  
 246, 256, 270, 294, 409  
 466, 528, 537
- Perinatal Hypoxia 444
- Perinatal Infections 205  
 267, 485, 490, 493, 499  
 510, 523
- Perinatal Projective (NCPP) 15  
 Collaborative (NCPP) 15  
 16, 21, 22, 36, 79  
 205, 166, 275, 288, 294  
 318, 157, 349, 401, 443  
 450, 157, 482, 497, 511  
 548, 168
- Perinatal Stress Score 62  
 175
- Perinatology 365
- Personal Pronouns 105
- Phenobarbital 481
- Phenothiazines 517
- Phenotypes 460, 461
- Phenytoin 315
- Phlebitis, Umbilical, Acute 391
- Photoc Latency 42, 108
- Phototherapy 481
- Physical Development 206  
 213, 247, 270, 403, 462  
 512, 513
- Physical Growth Patterns 111  
 112, 113, 138, 165, 179  
 184
- Physical Trauma 60
- Pica (paint and plaster) 71
- Pica Prevention 72
- Placenta 143, 146, 152, 30, 136  
 268, 305, 338, 346, 348  
 354, 391, 450
- Placenta, Bipartite 142

523 - 130

- Placenta, Circummarginata 8
- Placenta, Circumvallate 8
- Placenta, Dichorionic 147  
300, 301, 327
- Placenta, Extrachorial 8
- Placenta, Monochorionic 298  
300, 301, 327
- Placenta, Rubella Virus From  
44, 313
- Placenta Previa 352, 359  
370, 376, 444, 466, 469
- Placenta, Abruptio 349, 352  
355, 359, 368, 370, 376  
387, 388, 428, 442, 444  
445, 469
- Placental, Cross, Thyroid 64  
Activity
- Placental Growth Retardation  
162, 347, 352, 355, 360  
368, 387
- Placental Infarction 349  
351, 359, 368, 387, 393
- Placental Oxygen Diffusion  
Capacity 268
- Placental Pathology 93, 350  
352, 355, 357, 362, 363  
369, 382, 383, 388,  
394, 395, 450, 455
- Placental Position 276
- Placental Structural  
Composition 268
- Placental Transfusion 153
- Placental Height 160, 162  
287, 296, 354, 483, 522  
546
- Placental Heights In Twins 102
- Placentation 102, 147
- Placentitis 301
- Pneumonia, Congenital 391
- Pneumonia, Intrauterine 146
- Poisoning, Accidental 79  
537
- Poisoning, Lead 71, 72
- Polioencephalitis Immunization  
During Pregnancy 226  
513
- Polycythemia, Neonatal 547
- Polydactyly 566
- Polymorphisms, Chromosomal 281
- Population Cytogenetics 281
- Populations, Jewish 339
- Potentials, Visual Evoked  
99, 233
- PPVT, Peabody Picture  
Vocabulary Test 107, 456
- Prediction, Cerebral Palsy 92
- Preeclampsia 119
- Pregnancy, Acetonuria 53  
365, 379, 380, 384
- Pregnancy, Adolescent 33  
35, 112

- Pregnancy, Aspirin Exposure in 507, 516, 516  
 Pregnancy, Bleeding During 276, 469, 528  
 Pregnancy, Blood Pressure In 119, 120, 129, 351, 372, 373  
 Pregnancy, Diabetes in 50, 51, 53, 59, 168, 168, 252, 312, 383, 389, 540  
 Pregnancy, Diagnosis of Hypertension in 128  
 Pregnancy, Drugs In 12, 15, 79, 224, 227, 228, 270, 289, 366, 367, 505, 562  
 Pregnancy, Hypertension In 119, 127, 128, 129, 168, 351, 357, 365, 387, 388  
 Pregnancy, Hypotension in 127  
 Pregnancy, Hypothyroidism In 168, 284  
 Pregnancy, Meclizine in 506  
 Pregnancy, Noncatastrophic Trauma During 117  
 Pregnancy, Nutrition In 187, 188, 366, 373, 374, 375, 379, 380, 382, 388, 389  
 Pregnancy, Orqasm In 262, 438  
 Pregnancy, Planned 358  
 Pregnancy, Proteinuria In 119, 120, 129, 387, 471  
 Pregnancy, Rapid Succession 248  
 Pregnancy, Risk Factors In 36, 40, 54, 109, 120, 128, 192, 200, 211, 222, 225, 227, 228, 255, 290, 312, 347, 395, 398, 402, 436, 450  
 Pregnancy, Risk Patterns In 129  
 Pregnancy, Smoking In 41, 47, 48, 51, 65, 93, 161, 164, 180, 182, 183, 185, 186, 187, 188, 213, 215, 303, 305, 344, 345, 348, 354, 362, 364, 366, 369, 371, 374, 376, 379, 382, 388, 389, 390, 453, 492, 523  
 Pregnancy, Teenage 33, 35, 167, 375  
 Pregnancy, Viral Infections In 46, 87, 211, 251, 264, 265, 486, 487, 488, 489, 490, 499, 503  
 Pregnancy, X-Rays During 289, 509  
 Pregnancy Due Dates 358  
 Pregnancy Registration 21, 358  
 Pregnancy Heaage 16  
 Premature Rupture Membranes 84, 305, 344, 349, 359, 369, 372, 510, 523



## SUBJECT INDEX

- Prematurity  
 15, 25, 29, 1, 14  
 96, 146, 173, 52, 59  
 215, 237, 246, 176, 182  
 262, 309, 340, 252, 255  
 396, 441, 442, 341, 357  
 447, 453, 469, 445, 446  
 500, 510, 529, 479, 492  
 532, 533, 534, 530, 531  
 553
- Prenatal Correlates 39, 40
- Prenatal Drug Exposure 224
- Prenatal Exposure to Narcotics 198
- Prenatal Factors 21, 50
- Prenatal Growth 102, 148
- Prenatal Hormone Effects 78
- Prenatal Progesterone 85
- Preschool, IQ 40
- Preschool Children 27
- Preterm Delivery 359
- Preterm Infants 56, 356
- Primary Endocardial Fibroelastosis 310
- Primary Endocardial Fibroelastosis, Epidemiology of 310
- Problems, Collaborative Perinatal Project 16
- Progesterone, Prenatal 85
- Prolapsed Umbilical Cord 444
- Prolonged Gestational Age 355
- Pronouns, Personal 105
- Proteinuria in Pregnancy 119
- Psychological Correlates 1  
 75, 100, 283, 471, 472  
 479, 556, 559
- Psychological Data 316
- Psychological Factors 235
- Psychological Performance 81, 515, 551
- Psychometric Deficits 62
- Psychomotor Impairment 353
- Psychosexual Differentiation 85, 307
- Psychosis 528
- Pyuria, Maternal 357
- Q and C Banding 279, 460
- Quality Control 16, 270
- Race, Maternal 51, 403, 520, 521  
 456, 544
- Race Specific Standards 39  
 66, 81, 178, 182, 225  
 295, 360, 546, 550, 554

- Racial Differences 8, 19
  - 32, 51, 61, 77, 95
  - 98, 120, 134, 159, 166
  - 169, 177, 178, 181, 182
  - 183, 184, 186, 187, 194
  - 214, 215, 216, 227, 230
  - 231, 232, 233, 234, 235
  - 236, 249, 255, 267, 270
  - 271, 279, 280, 281, 299
  - 301, 316, 322, 327, 341
  - 342, 343, 391, 397, 399
  - 461, 462, 463, 464, 475
  - 483, 484, 523, 443, 553
  - 557, 568
- Racial Factors 23, 50
  - 51, 119, 128, 144, 145
  - 147, 246, 278, 294, 296
  - 332, 398, 400, 401, 410
  - 432, 443, 453, 459, 461
  - 500, 526, 560, 564
- Radial Diffusion Technique 291, 293
- Radiation Exposure 509
- Reading 270
  - 220, 234
- Renal Glomerular Development 149
- Replacement Therapy, Thyroid 284, 287, 519
- Reproduction 400, 443
- Research, Social Science 294
- Research Methodology 548
- Respiratory Distress Syndrome (RDS) 1, 84
  - 84, 113, 115, 252, 333
  - 334, 519, 530
- Respiratory Tract Infections 345
- Retardation, Mental 4, 16
  - 24, 36, 38, 60, 79
  - 207, 243, 244, 273, 282
  - 285, 285, 286, 287, 297
  - 342, 353, 409, 411, 412
  - 414, 420, 421, 428, 429
  - 431, 421, 531, 534, 567
- Rh Erythroblastosis Fetalis 146, 355
- Right-Left Asymmetries 49
- Risk Factors In Pregnancy 120
  - 36, 40, 84, 109, 120
  - 124, 192, 200, 211, 222
  - 225, 227, 228, 255, 290
  - 312, 347, 395, 398, 402
  - 436, 450
- Risk Patterns In Pregnancy 129
- Rubella, Congenital 44, 46
  - 87, 204, 207, 208, 211
  - 217, 218, 251, 259, 292
  - 293, 313, 485, 488, 489
  - 490, 491, 497, 500, 503
  - 555, 557
- Rubella, Epidemiology of 204
  - 206, 251, 313, 497, 501
  - 555
- Rubella, Maternal 210, 211
  - 494, 530, 555
- Rubella, Prevention 208, 251
  - 500
- Rubella Antibody 501
- Rubella Brain 219
- Rubella Epidemic of 1963-1964 44, 251, 465, 500, 565
- Rubella Vaccination 494, 565
- Rubella Virus From Placenta 44, 313

5227 - 1

## SUBJECT INDEX

- Rubella Virus From Throat  
Cultures 44, 313
- RV Virus 314
- Salicylates 514
- Sample Bias 199
- Sample Maintenance 68, 482
- Sample Selection 91, 270  
657
- Sample Size 189
- Schizophrenia 466, 528
- Schizophrenic Parents 466  
467, 468
- School Achievement 430
- School Age 70, 99  
100
- School Progress 236, 479
- Science Research Associates  
(SRA) 245, 456
- Screening, Audiometric 27  
472
- Screening, Speech 109, 472
- Seasonal Variation Factors 365
- Secondary Arrest of Dilatation 125
- Section, Cesarean 7, 9
- Seizure Disorders 90, 337  
421, 422, 427, 520, 556
- Seizures, Afebrile 413, 420  
427
- Seizures, Febrile 63, 89  
91, 118, 191, 199, 238  
240, 241, 253, 277, 404  
405, 406, 407, 408, 412  
413, 423, 424, 425, 426  
427, 454, 545
- Seizures, febrile, Epidemiology of 91, 199  
238, 406
- Seizures, febrile, Treatment of 118, 238  
406
- Seizures, Incidence of 190
- Seizures, Maternal 24, 67  
421, 428
- Seizures, Minor Motor 412
- Seizures, Neonatal 209, 243  
297, 409
- Seizures in Infants 190, 191
- Semantic Resolution 107
- Sensory Impairment 16, 200  
353
- Serologic Diagnosis 498, 500
- Serologic Tests, Maternal 493
- Serological Survey 429, 489
- Serum Bilirubin, Neonatal 26, 216, 353, 481
- Serum Butanol-Extractable Iodine (BEI) 523 - 140  
283
- Sex Characteristics 23, 39  
246, 296, 332, 410, 459

- Sex Differences  
 76, 77, 86, 95, 98, 32  
 110, 139, 196, 198, 216  
 232, 233, 234, 236, 270  
 280, 282, 316, 322, 325  
 327, 329, 342, 343, 430  
 433, 462, 464, 475, 483  
 513, 524, 526, 551, 553  
 562, 564
- Sex Hormones, Female 86  
 227, 250
- Sex of Person Drawn 232, 271
- Sex Ratio 299, 557
- Sexual Intercourse 30, 262
- Sibling Differences 433
- Siblings 89, 287  
 430
- Siblings, Malformations in 516
- Siblings, Mental Retardation in 48
- Sickled Erythrocytes 144
- Sickling 144, 153
- SIDS 93, 242, 350, 381, 386  
 390
- Single Umbilical Artery(SUA)  
 6, 136, 138
- Singletons 340, 341  
 342
- Singletons, Malformations In  
 322, 324, 332, 338
- Sinus, Marginal Rupture, 442
- Skull Defects 328
- Skull Defects, Epidemiology of 328
- SLM Examinations 103, 270  
 457
- SLM Examiners 270
- Smoking 163, 173, 174, 544  
 30, 157
- Smoking In Pregnancy 41  
 47, 48, 51, 65, 93  
 161, 164, 180, 182, 183  
 185, 186, 187, 188, 213  
 215, 303, 305, 344, 345  
 348, 354, 362, 364, 366  
 369, 371, 374, 376, 379  
 382, 388, 389, 390, 455  
 403, 492, 523
- Sociability 269
- Social Class 271
- Social Factors 246, 269  
 557, 560
- Social Science Research 294
- Socioeconomic Differences 184
- Socioeconomic Factors 36  
 76, 111, 119, 184, 214  
 219, 294, 393, 399, 462  
 466
- Socioeconomic Index 184, 270  
 280, 337, 342, 461, 557  
 560
- Socioeconomic Status 32  
 39, 73, 112, 113, 182  
 190, 236, 254, 306, 348  
 391, 432, 463, 479, 496  
 561

5237 - 1

- Socioeconomics 29, 33  
35, 154, 156, 157, 159
- Somatostatin, Human 102
- Spasmus Nutans 256
- Spastic Diplegia 55, 56  
411
- Speech, Correlates of 106
- Speech, Eccentric 103
- Speech, Language, Hearing,  
(SLH) Examinations 103  
270, 457
- Speech, Language, Hearing,  
(SLH) Examiners 270
- Speech Areas, Temporal 49
- Speech Function 49, 98  
103
- Speech-Language-Hearing  
Outcome at 3 Years 134  
513
- Speech Mechanism 270
- Speech Perception 219
- Speech Production 103, 270
- Speech Screening 109, 472
- Spina Bifida 267
- Spinal Cord Injury, Neonatal  
529, 530
- Spontaneous Abortion 314  
397, 398, 400, 402
- Spontaneous Closure 311
- SRA, Science Research 245, 456  
Associates
- Staining, Meconium 152
- Standardized Tests,  
Problems In 219
- Standardized Tests,  
Validity Of 219
- Stanford-Binet Intelligence  
Test 4, 5  
18, 53, 54, 81, 96  
98, 103, 116, 254, 551  
557, 561
- Stature, Maternal 171, 180
- Stillbirth 24, 149  
221, 311, 351, 421, 428  
483, 492, 515
- Stillborn Conjoined Twins  
335, 336
- Strabismus 256
- Structural Composition,  
Placental 268
- Subependymal Matrix Infarction  
535
- Substandard Housing 72
- Sudden Infant Death Syndrome  
2, 36, 93, 242, 350  
381, 386, 390
- Syndrome, Down's 282, 312  
314, 429, 547
- Syndrome, Hydatoin, Fetal  
200, 308
- Syndrome, Respiratory Distress  
(RDS) 1, 64  
84, 113, 115, 252, 333  
334, 519, 530

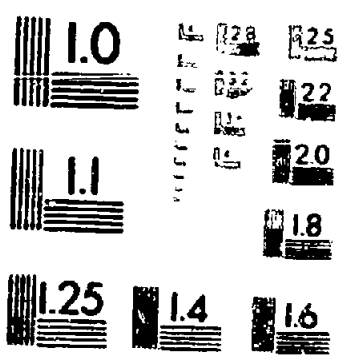
- Syndrome, Sudden Infant Death  
     2, 36, 93, 242, 350  
     381, 386, 390
- Tay-Sachs Disease 339
- Teenage, Pregnancy 33, 35  
     167, 375
- Teeth 168
- Temporal Gyrus, Superior 49
- Temporal Gyrus, Transverse 49
- Temporal Speech Areas 49
- Teratogens, Human 57, 201  
     330, 366, 486, 508, 542
- Test, Bender-Gestalt 110  
     194, 230, 231, 551, 552  
     554
- Test, Stanford-Binet  
     Intelligence 4, 5  
     18, 53, 54, 81, 96  
     98, 103, 116, 254, 551  
     557, 561
- Testing, Behavioral of Newborn  
     474, 475, 476, 477
- Tests, IQ 111, 198  
     219, 234, 287, 341, 342  
     434, 466, 552
- Tests, IQ, Problems In 219  
     434
- Tests, IQ, Validity Of 219
- Tests, Motor 111, 287  
     341
- Tests, Serologic, Maternal 493
- Throat Cultures, Rubella  
     Virus From 44, 313
- Thrombocytopenia 140
- Thyroid Activity,  
     Cross-Placental 64
- Thyroid Function 283, 284  
     285, 286, 287
- Thyroid Hormones 64
- Thyroid Replacement Therapy  
     284, 287, 519
- Thyroid-Stimulating Hormone  
     (TSH) 283, 519
- Titmus Vision Tester 43
- Tooth Size 168, 169
- Toxemia 119, 120  
     128, 129, 139, 148, 442  
     445, 541
- Toxicity, Bilirubin 272, 353  
     481
- Toxoplasmosis 485, 488
- Transfusion, Placental 153
- Trauma During Pregnancy,  
     Fetoplacental 117
- Treatment of Epileptic Seizures  
     118, 238, 406
- True Knots, Umbilical Cord 522
- Twin Differences 150, 324  
     433
- Twin Studies, Perinatal 527
- Twin Study, Louisville 102  
     434

- Twins  
 139, 147, 148, 206, 222  
 247, 302, 312, 318, 327  
 333, 334, 340, 341, 342  
 396, 430
- Twins, Behavior of 195, 266
- Twins, Birth Order of 569
- Twins, Birthweights In 102
- Twins, Conjoined 336
- Twins, Conjoined, Stillborn  
 335, 336
- Twins, Dizygotic 301, 327  
 396
- Twins, Epidemiology of 319
- Twins, IQ In 266, 301
- Twins, Malformations In 321  
 322, 324
- Twins, Malformations In  
 Monozygotic 322, 338
- Twins, Monozygotic 41, 150  
 298, 300, 301, 327, 396
- Twins, Placental Weights In 102
- Umbilical Artery, Single 6  
 156, 158
- Umbilical Cord, Around Body 522
- Umbilical Cord, Nuchal Collar 522
- Umbilical Cord, Occult  
 Prolapse of 448
- Umbilical Cord, Prolapsed 444, 447
- Umbilical Cord, True Knots 522
- Umbilical Phlebitis, Acute 391
- Umbilical Veins 153
- Undersized Term Infants 5
- United States Bureau of the  
 Census 337
- United States Cities 396
- Urban Children 73, 219  
 220, 462, 463, 526, 552
- Urinary Tract Infections,  
 Maternal 273, 357  
 380, 492
- Urine Test, Coproporphyrin 71
- Uterine Bleeding 276, 469  
 528
- Uterine Dysfunction 543
- Values, Normative 189
- Veins, Chorionic 153
- Veins, Umbilical 153
- Ventricular Septal Defects  
 309, 311
- Verbal Latency Response 480
- Viral Infections in Pregnancy  
 46, 87, 211, 251, 264  
 265, 486, 487, 488, 489  
 490, 499, 503
- Virus, H-1 314
- Virus, RV 314
- Viruses 46, 487

- Vision Tester, Titmus 43  
 Visual Capacity 45  
 Visual Evoked Potentials 99  
 Visual Evoked Response (VER)  
   95, 96, 98, 100  
 Visual Examination 5, 473  
 Vocabulary Test, Peabody  
   Picture (PPVT) 107, 456  
 Vocalization, Infant 472  
 WAIS, Wechsler Adult  
   Intelligence Scale 245  
 Wechsler Adult  
   Intelligence Scale, (WAIS)  
   245  
 Wechsler Intelligence Scale  
   for Children (WISC) 194  
   230, 231, 551  
 Weight, Birth 1, 4  
   13, 23, 25, 26, 29  
   30, 53, 54, 66, 80  
   81, 82, 83, 90, 114  
   115, 134, 145, 146, 149  
   150, 162, 168, 171, 174  
   179, 180, 182, 189, 206  
   207, 213, 216, 247, 248  
   261, 266, 272, 287, 295  
   296, 305, 354, 385, 393  
   399, 419, 442, 443, 444  
   445, 446, 447, 448, 452  
   453, 462, 463, 483, 505  
   507, 512, 517, 522, 543  
   544, 546, 549, 550, 553  
 Weight, Brain 148  
 Weight, Low Birth 59  
   64, 86, 113, 183, 209  
   214, 279, 309, 437, 451  
   452, 458, 479, 481, 492  
   493, 496, 525  
 Weight, Low Brain 259  
 Weight, Ovipar 148  
 Weight, Placental 160, 162  
   287, 296, 354, 483, 522  
   546  
 Weight, Prepregnancy 171  
   174, 180, 186, 187, 214  
   363, 437, 453, 549, 550  
 Weight Gain, Child 114, 189  
 Weight Gain, Maternal 114  
   119, 167, 174, 186, 187  
   215, 305, 347, 354, 362  
   363, 364, 365, 373, 384  
   388, 391, 437, 452, 453  
   512, 549, 550  
 Wide Range Achievement Test  
   (WRAT) 230, 231  
   551  
 WISC, Wechsler Intelligence  
   Scale for Children 194  
   230, 231, 551  
 Work 30  
 Work, Heavy Manual 374  
 Working in Pregnancy 393  
 WRAT, Wide Range Achievement  
   Test 230, 231  
   551  
 Written Communication 270  
 X-Rays During Pregnancy 289  
 Zygosity Determination 29  
   102, 147, 318, 319, 322  
   334



END OF FILE



MICROCOPY RESOLUTION TEST CHART  
 NATIONAL BUREAU OF STANDARDS-  
 1963-A REFERENCE MATERIAL  
 NATIONAL BUREAU OF STANDARDS-1963-A